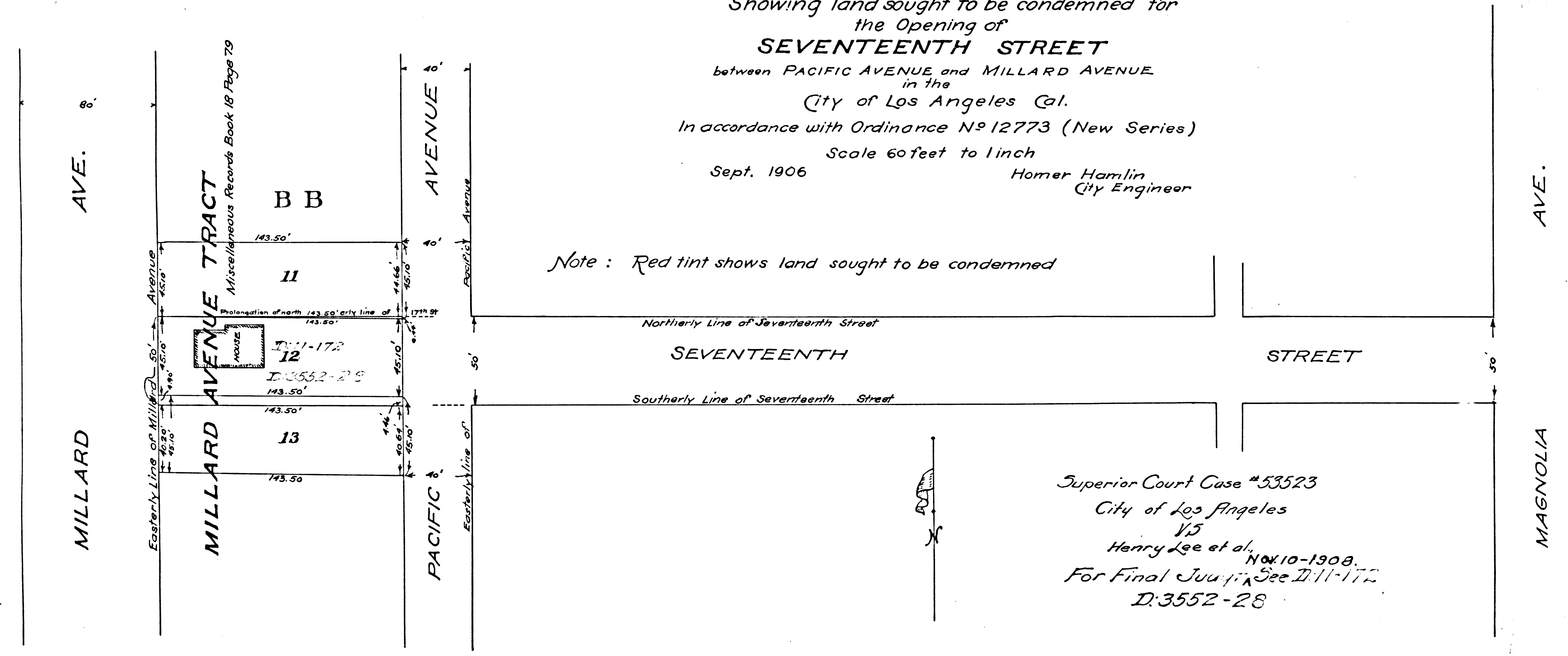


**MAP**  
 Showing land sought to be condemned for  
 the Opening of  
**SEVENTEENTH STREET**  
 between PACIFIC AVENUE and MILLARD AVENUE  
 in the  
 City of Los Angeles Cal.  
 In accordance with Ordinance No 12773 (New Series)  
 Scale 60 feet to inch  
 Sept. 1906  
 Homer Hamlin  
 City Engineer



Superior Court Case #53523  
 City of Los Angeles  
 vs  
 Henry Lee et al. No. 10-1908  
 For Final Judgment See D:11-172  
 D:3552-28

C.F. 524 -

