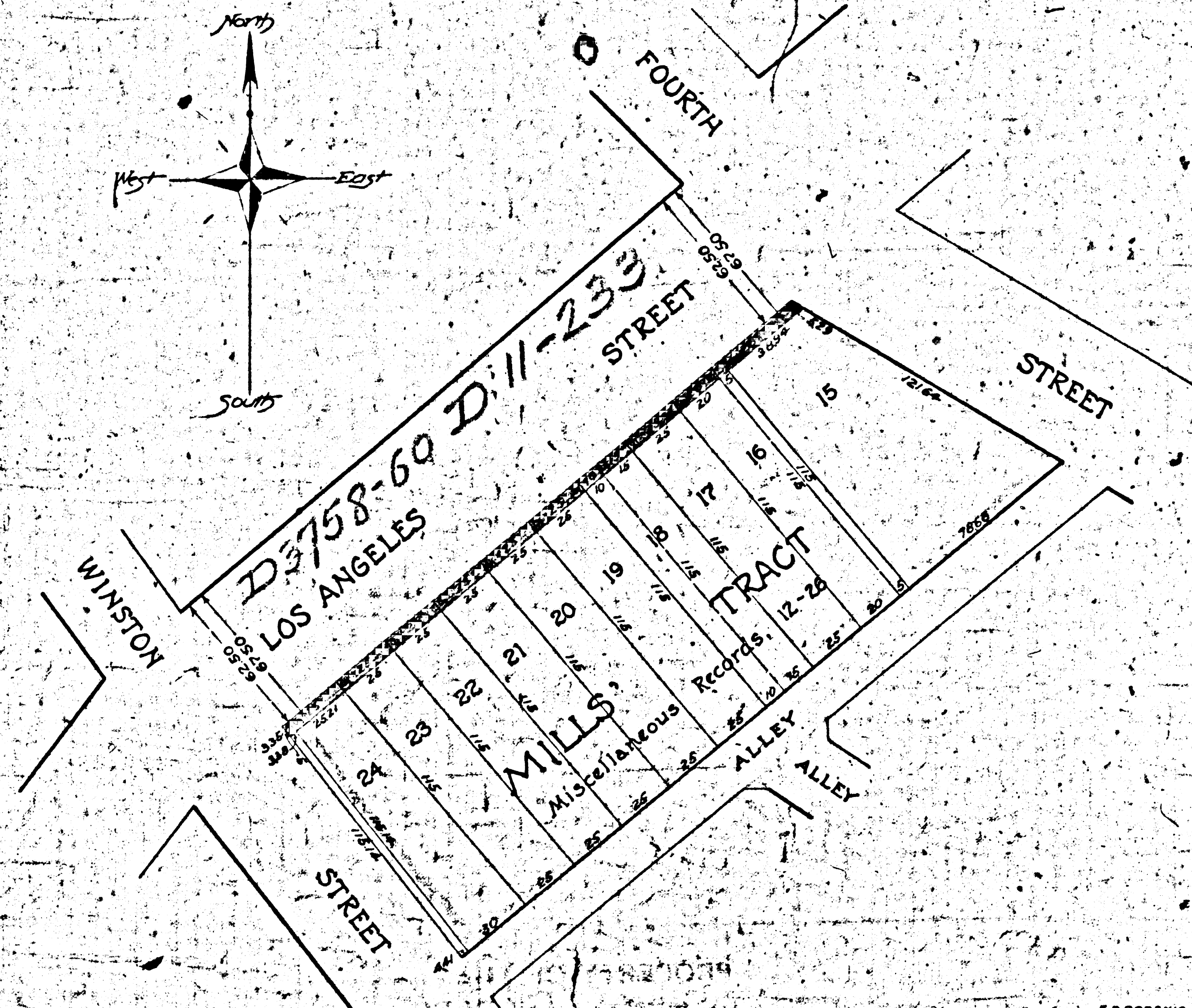
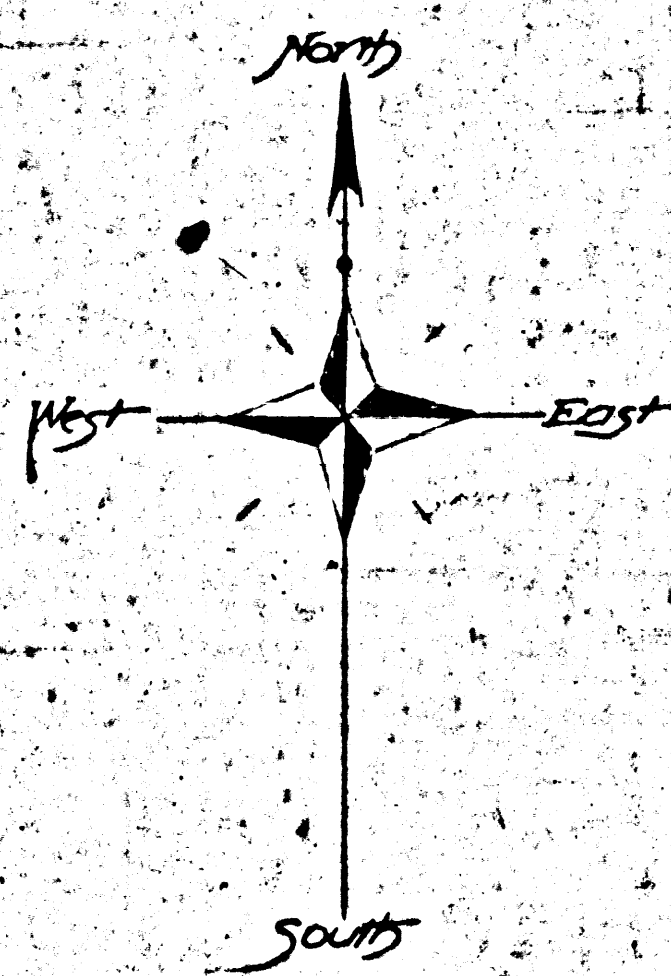


MAP
 SHOWING LAND SOUGHT TO BE CONDEMNED
 FOR THE WIDENING OF
 LOS ANGELES STREET
 BETWEEN
 FOURTH STREET AND WINSTON STREET
 IN THE
 CITY OF LOS ANGELES
 In accordance with Ordinance No. 15338 (N.S.),
 NOV. 1907.
 Homer Hamlin - City Engineer
 SCALE 60 ft. per in.

Note: Land to be condemned shown colored red.

S.C. # 59318

Survey made Aug. 1, 1898, to determine
 status of property according to Ord.
 15338, Ord. 15391
 for City map see # 6328
 Survey made 2/14/1899
 All proceedings complete
 Filed C.E. Bond 12-3-07



CUT PRINTS OF THIS BORDER LINE

C F 5215