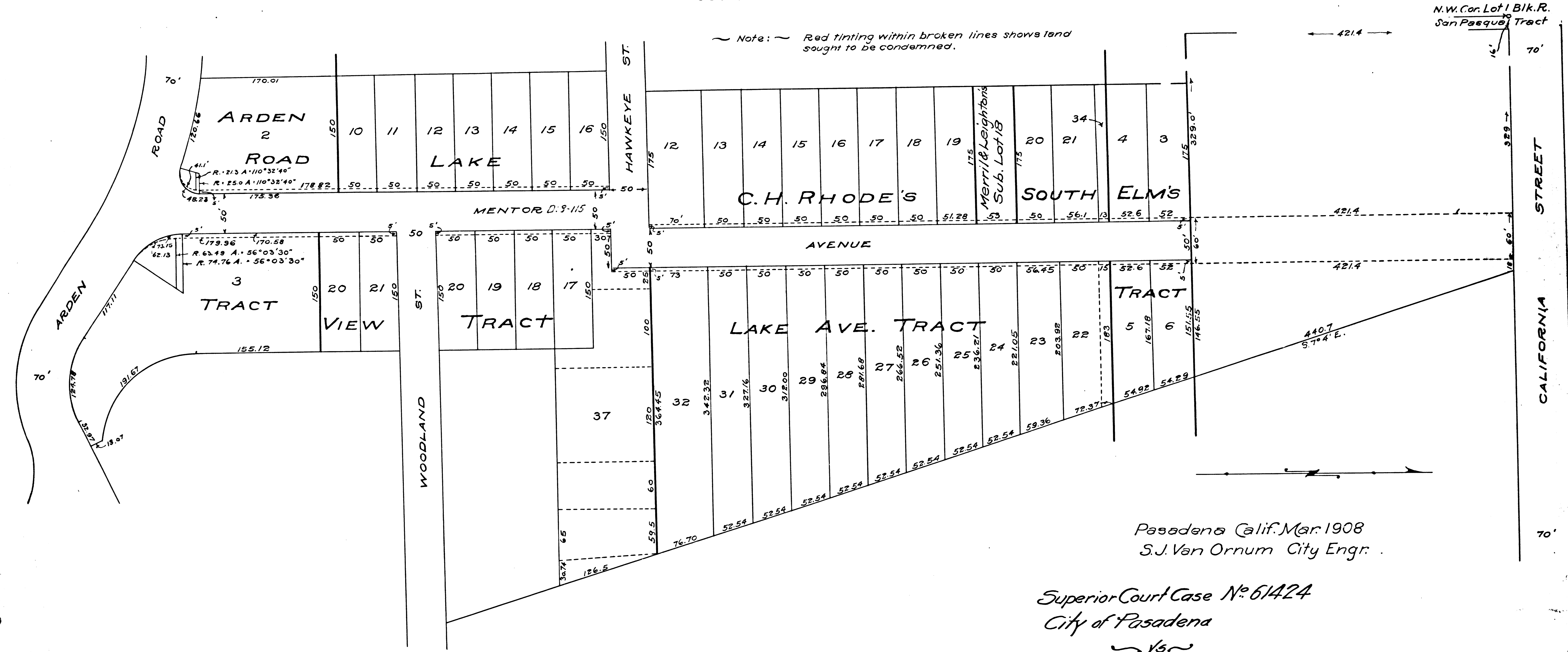


MAP

Showing lands sought to be condemned for the opening and widening of
MENTOR AVENUE
 Between the South Line of California St. and the North line of Arden Road
 City of Pasadena Cal.,
 In accordance with Ordinance No 822
 Scale: 1 in = 100 ft.

Note: Red tinting within broken lines shows land sought to be condemned.



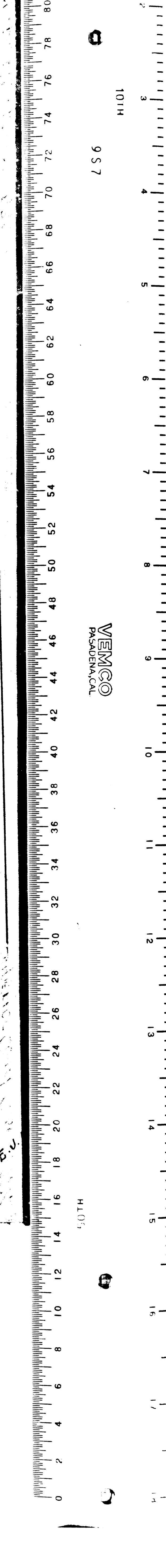
Pasadena Calif. Mar. 1908
 S.J. Van Ornum City Engr.

Superior Court Case No 61424
 City of Pasadena

vs
 Oak Knoll Co, et al,
 For Final Judgt See D: 8-114
 Mar 27 1908 D: 3831-90

Sht 3

C.F. 530 -



MEMCO
 PASADENA CAL.

MEMCO
 PASADENA CAL.