

REAR COUNTER
 CRAFTSMAN TOOLS
 IN THE
 1 2 3 4 5 6 7 8 9 10 11 12 13 14 15 16 17 18 19 20 21 22 23 24 25 26 27 28 29 30 31 32 33 34 35 36 37 38 39 40 41 42 43 44 45 46 47 48 49 50 51 52 53 54 55 56 57 58 59 60 61 62 63 64 65 66 67 68 69 70 71 72 73 74 75 76 77 78 79 80 81 82 83 84 85 86 87 88 89 90

MAP
 Showing lands sought to be condemned for the
 widening, opening and extending of
Grand Avenue
 From the north line of P.C. Baker's Subdivision to the
 south line of P.C. Baker's Subdivision and from the south
 line of P.C. Baker's Sub. to the south line of land marked
 Matthews.

S. J. G. L. N. 516
 City of Pasadena
 vs.
 Wm. C. Baker
 et al.
 No. 1000
 Filed 5-11

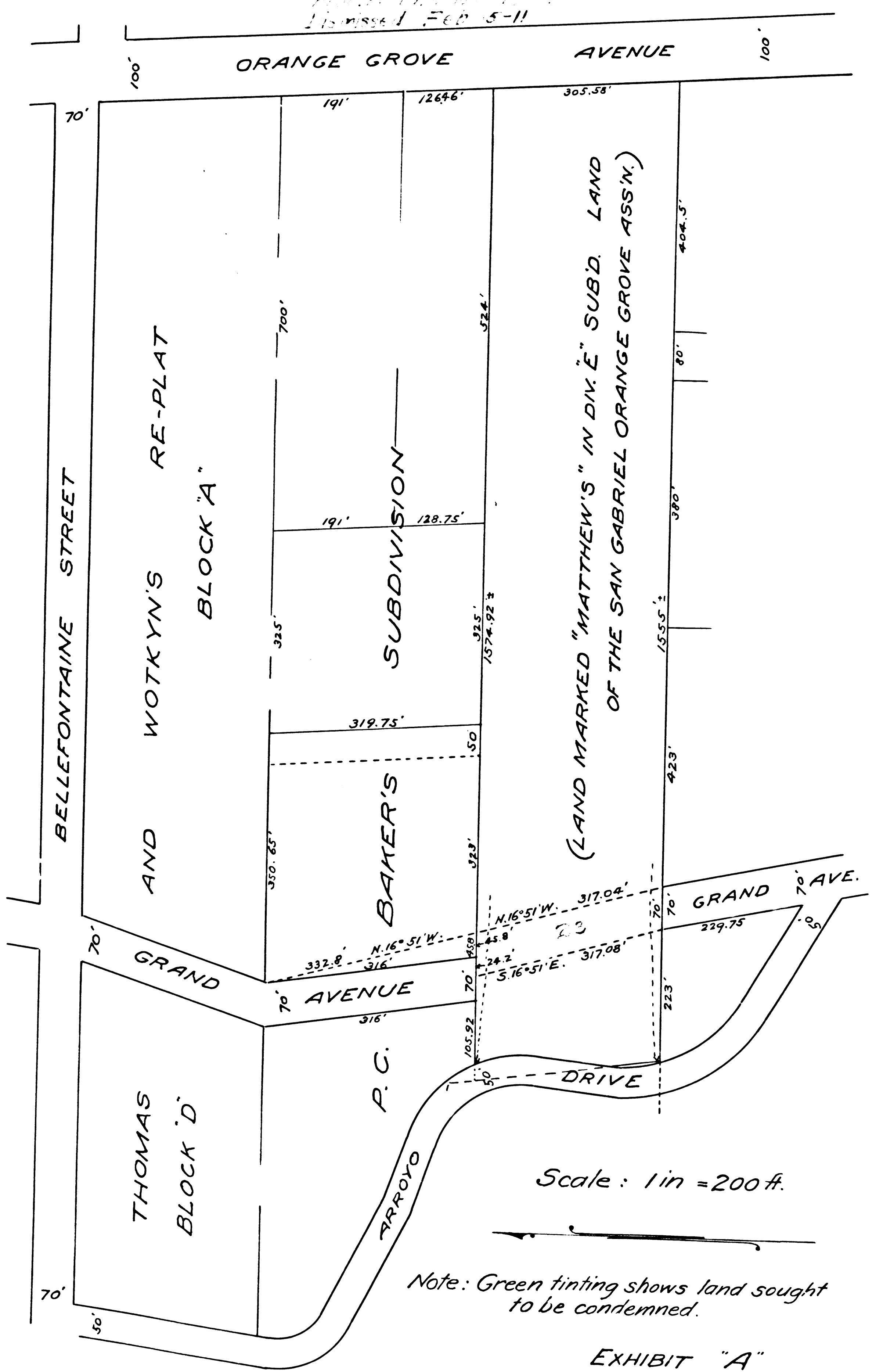


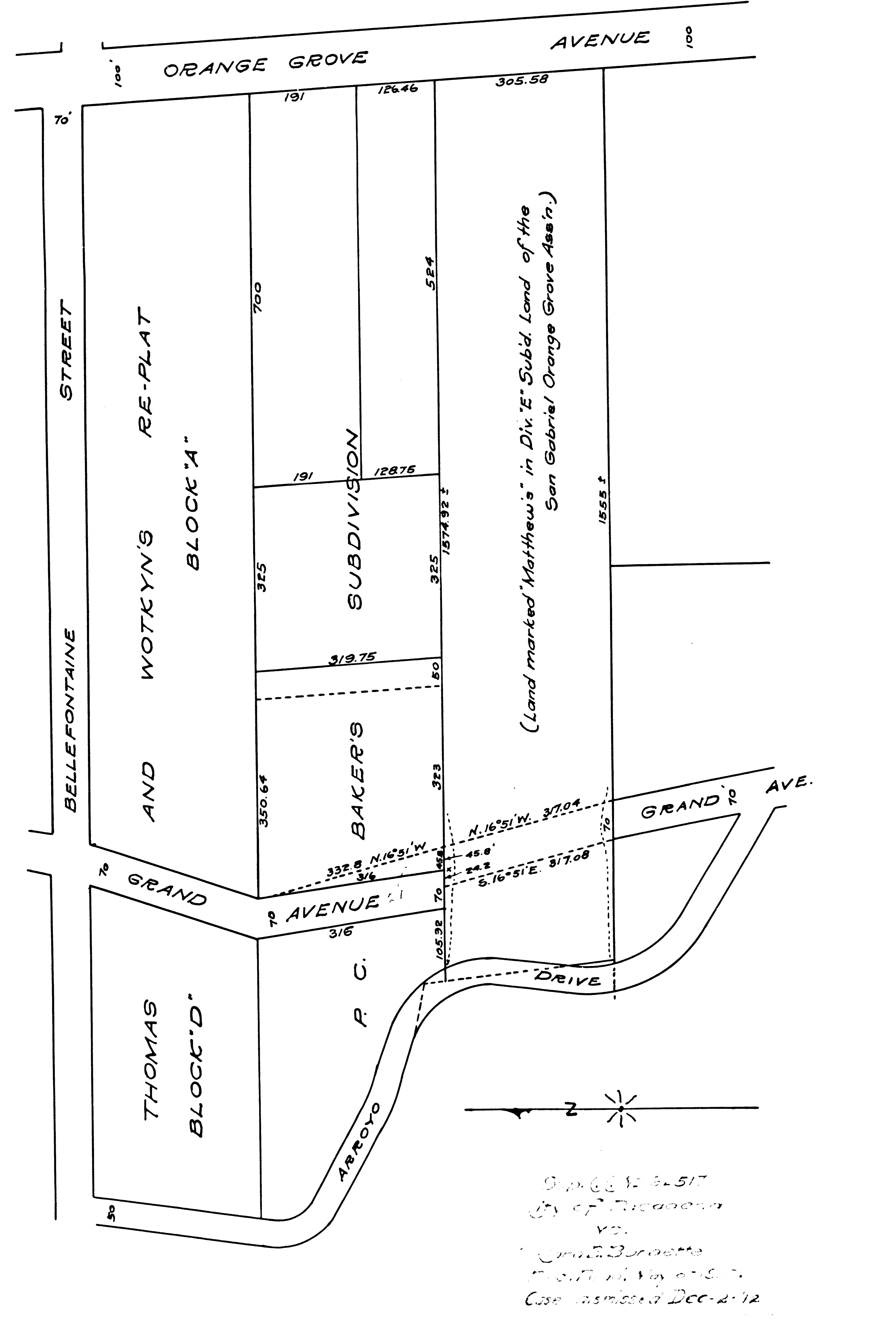
EXHIBIT "A"

10TH
 957
 MEMCO
 PASADENA

MAP
 Showing lands sought to be condemned for the widening,
 opening and extending of
GRAND AVENUE
 From the north line of P.C. Baker's Subdivision to the South line of P.C. Baker's Subdivision
 and from the South line of P.C. Baker's Sub. to the south line of land marked "Matthew's".
 In accordance with Resolution No. 1983 City of Pasadena, California.
 Scale 1" = 200'.

Note: Green tinting shows land sought to be condemned.

EXHIBIT "A".



S. J. G. L. N. 517
 City of Pasadena
 vs.
 Wm. C. Baker
 et al.
 No. 1000
 Filed Dec-2-12

10TH
 957
 MEMCO
 PASADENA

C.F. 540 -