

MAP
SHOWING LAND SOUGHT TO BE CONDEMNED FOR THE OPENING OF AN
ALLEY

FROM
TWENTY-NINTH STREET TO THIRTY-FIRST STREET
BETWEEN

GRIFFITH AVENUE AND CENTRAL AVENUE

IN THE
CITY OF LOS ANGELES CAL.

In accordance with Ordinance N^o 16,225 (New Series)

Scale: 1 inch equals 100 feet June 1908

Homer Hamlin, City Engineer

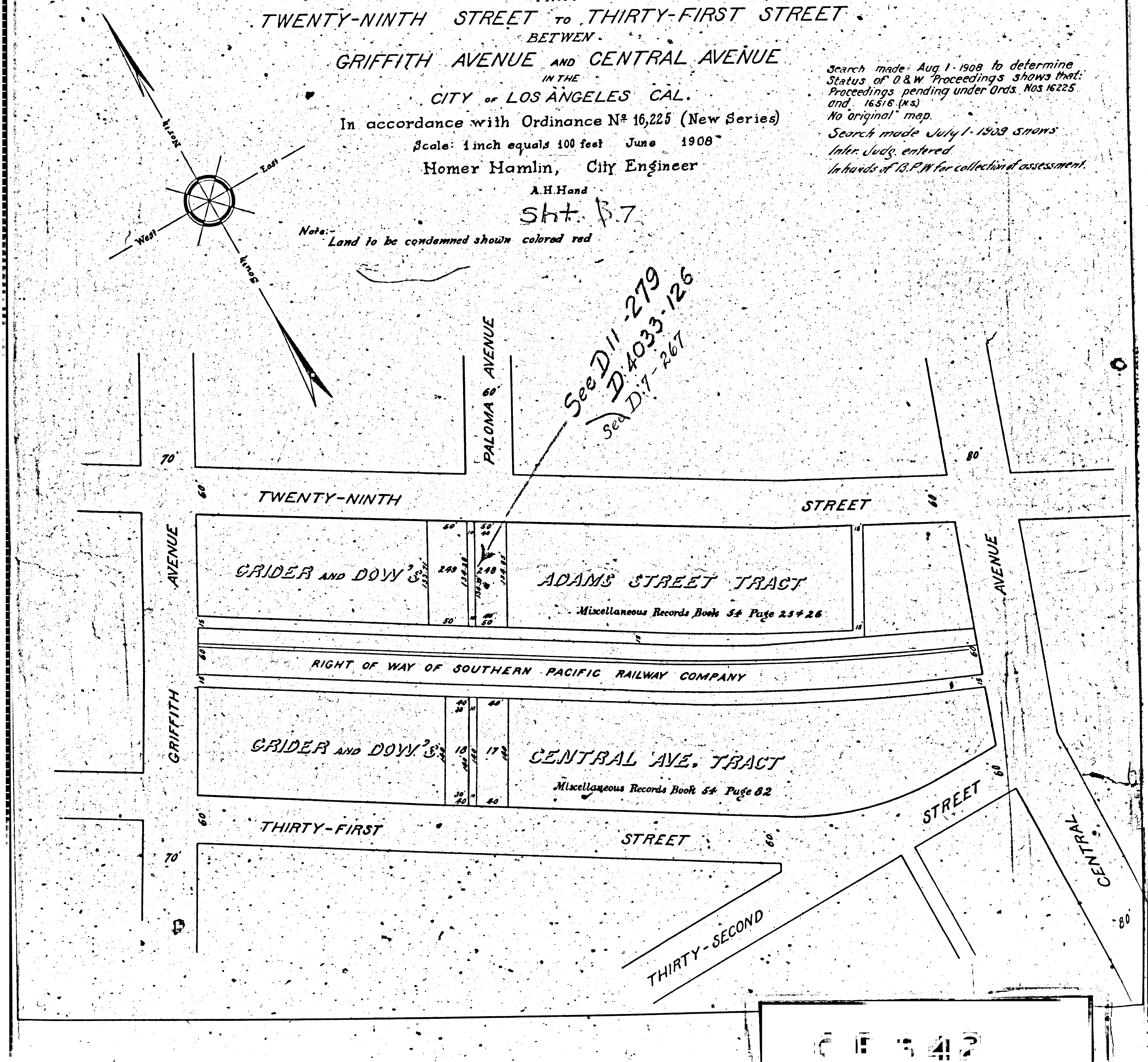
A.H. Hand

Sh. B. 7

Note: Land to be condemned shown colored red

Search made Aug. 1, 1908 to determine
Status of O & W Proceedings shows that:
Proceedings pending under Ords. Nos. 16225
and 16516 (N.S.)
No original map.

Search made July 1, 1909 shows
Inter. Judg. entered
In hands of B.F.W. for collection of assessment.



C E 5 4 2