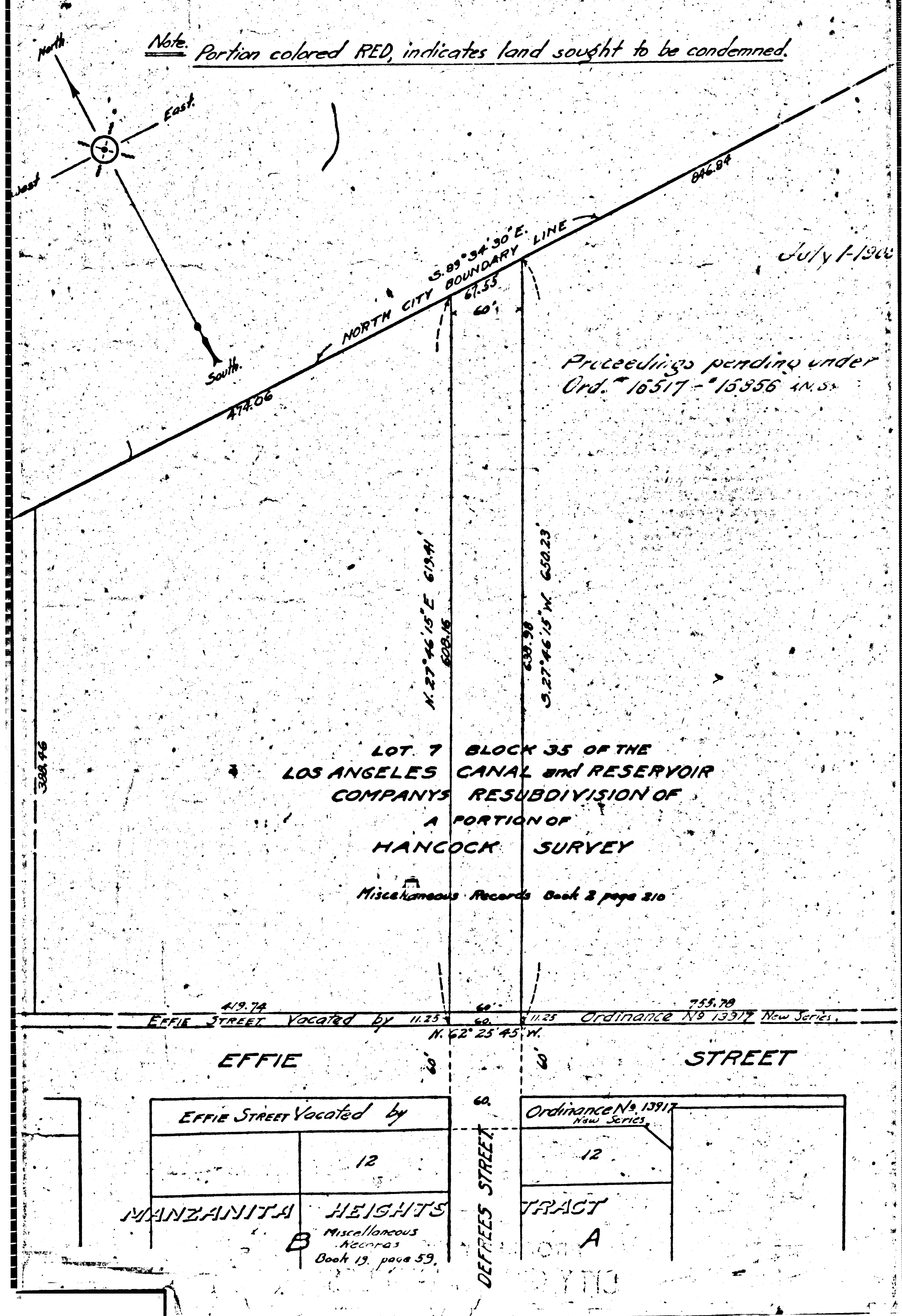


MAP
 SHOWING LAND TO BE CONDEMNED
 FOR THE OPENING OF
DEFREES STREET
 FROM
EFFIE STREET TO NORTH CITY BOUNDARY LINE
 IN THE
CITY OF LOS ANGELES CAL.
 in accordance with Ordinance No 16517 (New Series)
 HOMER HAMLIN CITY ENGINEER. SEPTEMBER 2, 1908.
 Scale 1. inch = 100 feet.



C I F 5 2 7