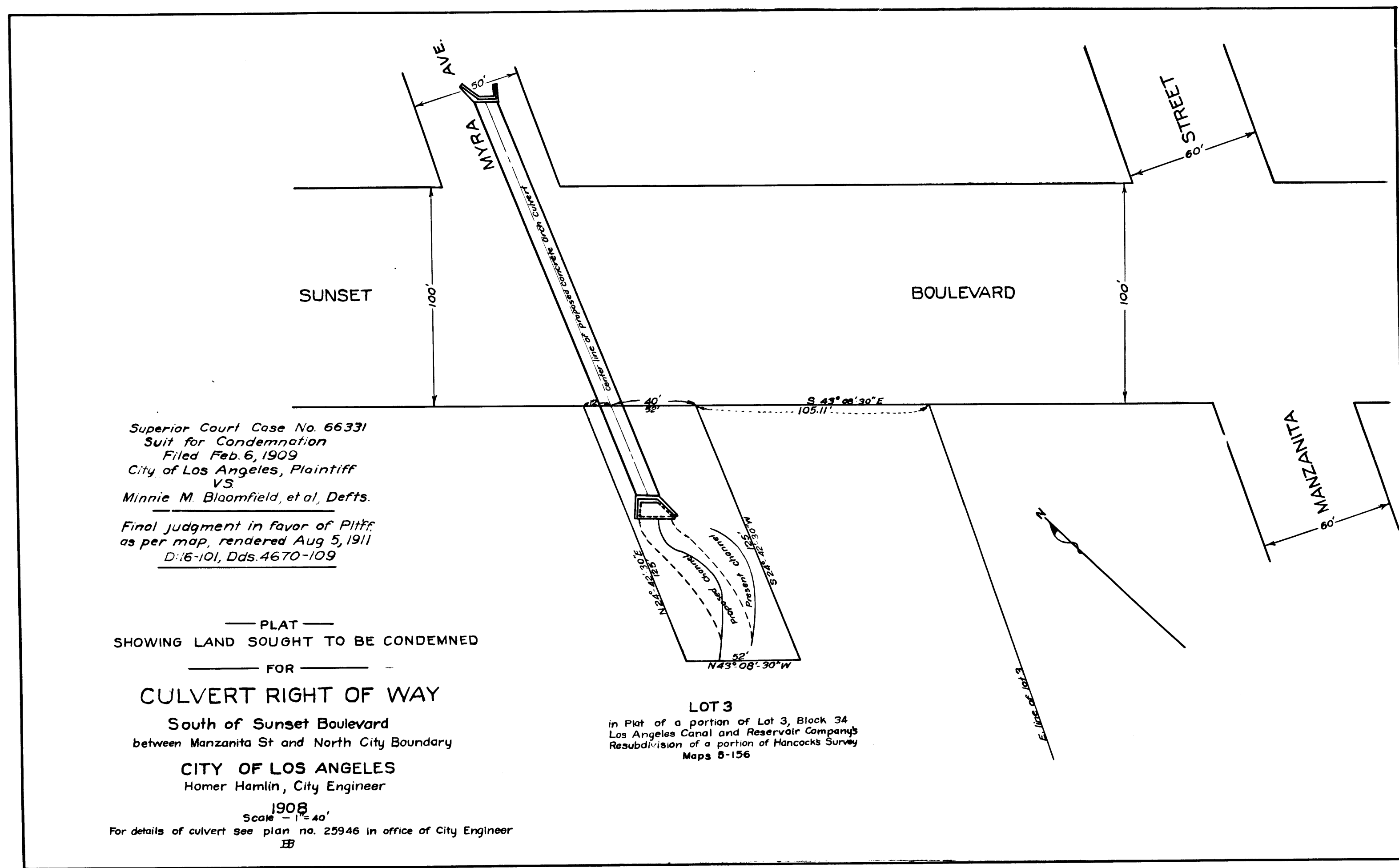


9 S 7

MEMCO PASADENA, CAL.

50 TH



Superior Court Case No. 66331  
 Suit for Condemnation  
 Filed Feb. 6, 1909  
 City of Los Angeles, Plaintiff  
 VS  
 Minnie M. Bloomfield, et al, Defts.  
 Final judgment in favor of Pltff  
 as per map, rendered Aug 5, 1911  
 D:16-101, Dds. 4670-109

— PLAT —  
 SHOWING LAND SOUGHT TO BE CONDEMNED  
 FOR  
**CULVERT RIGHT OF WAY**  
 South of Sunset Boulevard  
 between Manzanita St and North City Boundary  
**CITY OF LOS ANGELES**  
 Homer Hamlin, City Engineer  
 1908  
 Scale - 1" = 40'  
 For details of culvert see plan no. 25946 in office of City Engineer  
 EB

**LOT 3**  
 in Plat of a portion of Lot 3, Block 34  
 Los Angeles Canal and Reservoir Company's  
 Resubdivision of a portion of Hancock's Survey  
 Maps 8-156

C.F. 558 -

9 S 7

MEMCO PASADENA, CAL.

50 TH