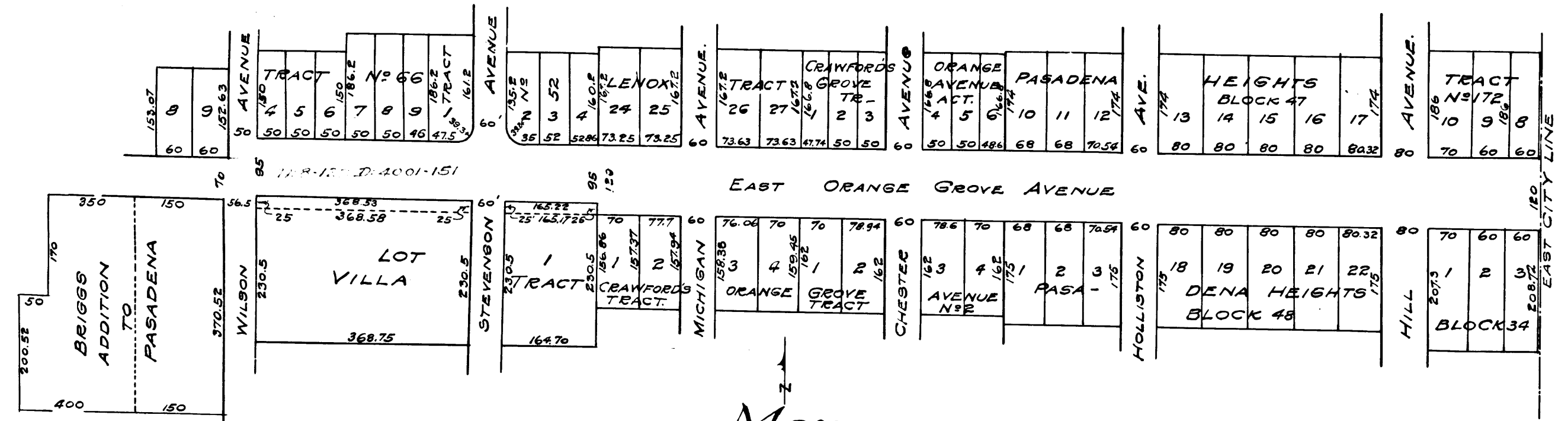


EXHIBIT "C":



Map

Showing Assessment district and Land sought to be condemned for widening of East Orange Grove Avenue

Pasadena, Cal.

Jan. 1909. S.J. Van Ornum, City Engineer. Scale 1 inch = 200 feet

Note: - Brown tinting shows condemned land.

S. C. Case No. 66410  
City of Pasadena, Plff.  
vs  
Mary Hanley, et al,  
Final Judgment, Dec 24, 1909  
D: 18-123



C.F. 559 -