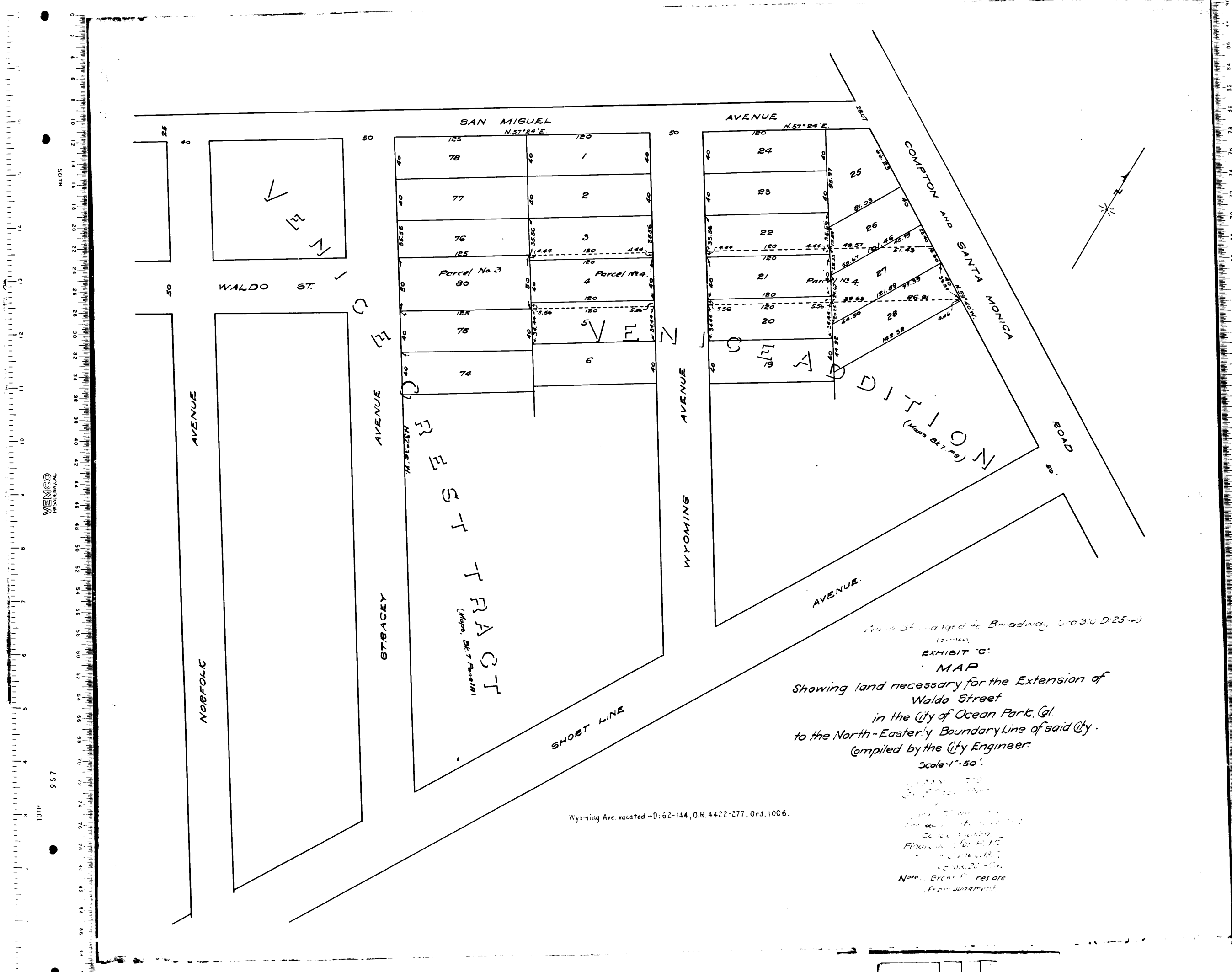
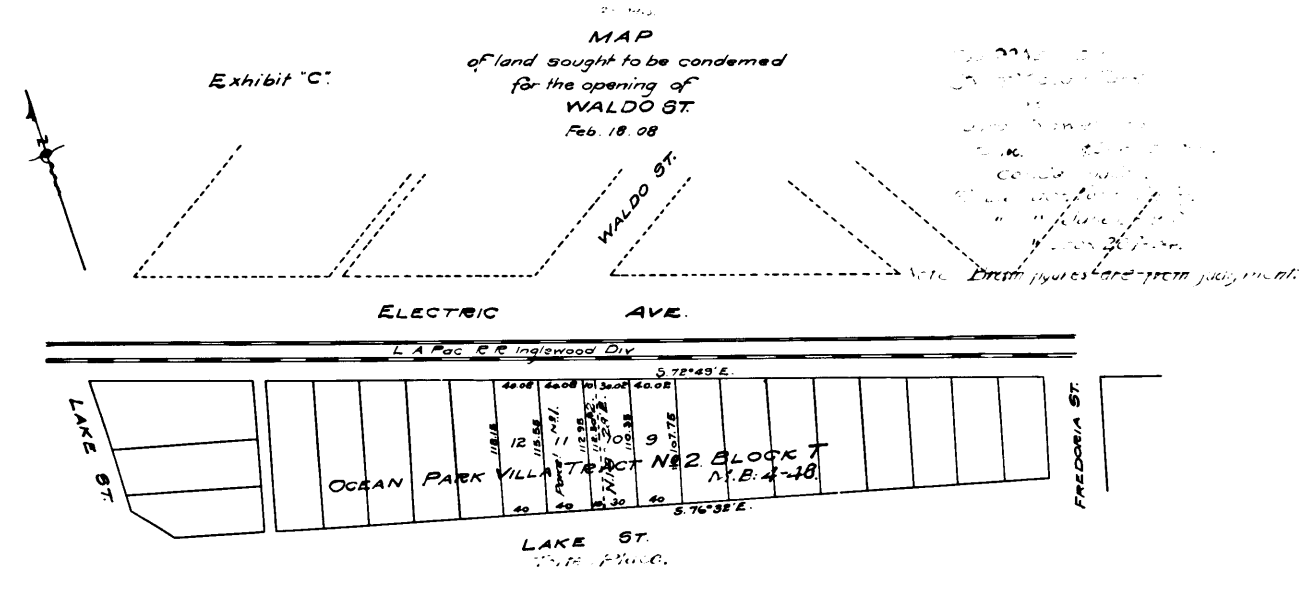


REAR COUNTER CRAFTSMAN TOOLS MADE IN U.S.A. GUARANTEED HIGHEST QUALITY



Map of land bought to be condemned for the opening of WALDO ST. Feb. 18 28.

EXHIBIT 'C'

MAP

Showing land necessary for the Extension of Waldo Street in the City of Ocean Park, Cal. to the North-Easterly Boundary Line of said City. Compiled by the City Engineer. Scale 1" = 50'

Waldo Street vacated - D. 62-144, O.R. 4422-277, Ord. 1006.

City of Ocean Park, California

City Engineer

Waldo Street vacated - D. 62-144, O.R. 4422-277, Ord. 1006.

City of Ocean Park, California

City Engineer

C.F. 560 -