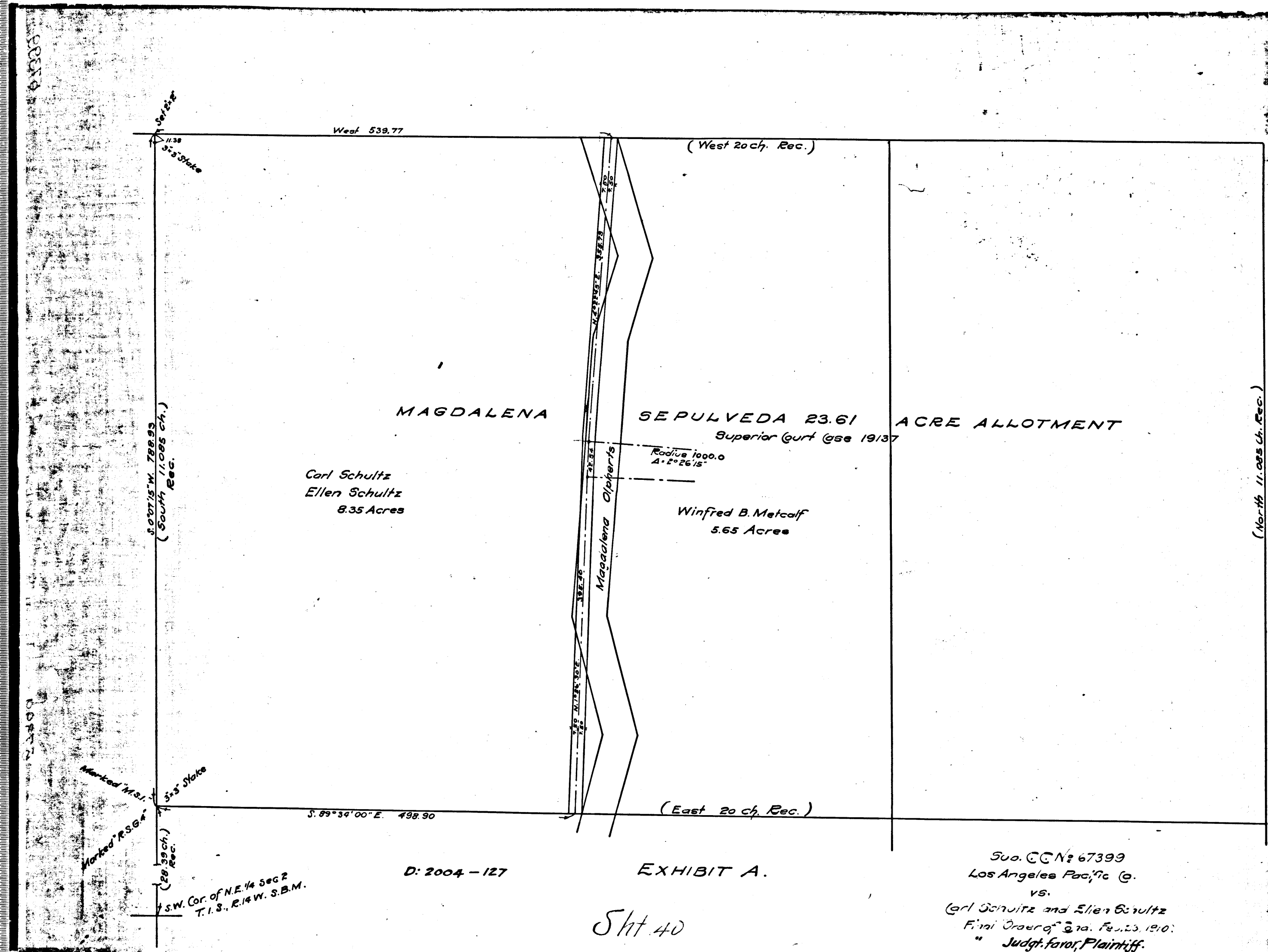


10TH 9 5 7

VEMCO PASADENA CAL



Carl Schultz  
Ellen Schultz  
8.35 Acres

SEPULVEDA 23.61 ACRE ALLOTMENT  
Superior (urt @se 19137

Winfred B. Metcalf  
5.65 Acres

Magdalena Olipherts

D: 2004 - 127

EXHIBIT A.

Sh 40

Suo. CCN: 67399  
Los Angeles Pacific Co.  
vs.  
Carl Schultz and Ellen Schultz  
Final Order of 3.10. Feb. 23. 1910.  
Judgt. favor, Plaintiff.  
Book. 205-125.

C.F. 566

Scale 1"=100'

10TH 9 5 7

VEMCO PASADENA CAL