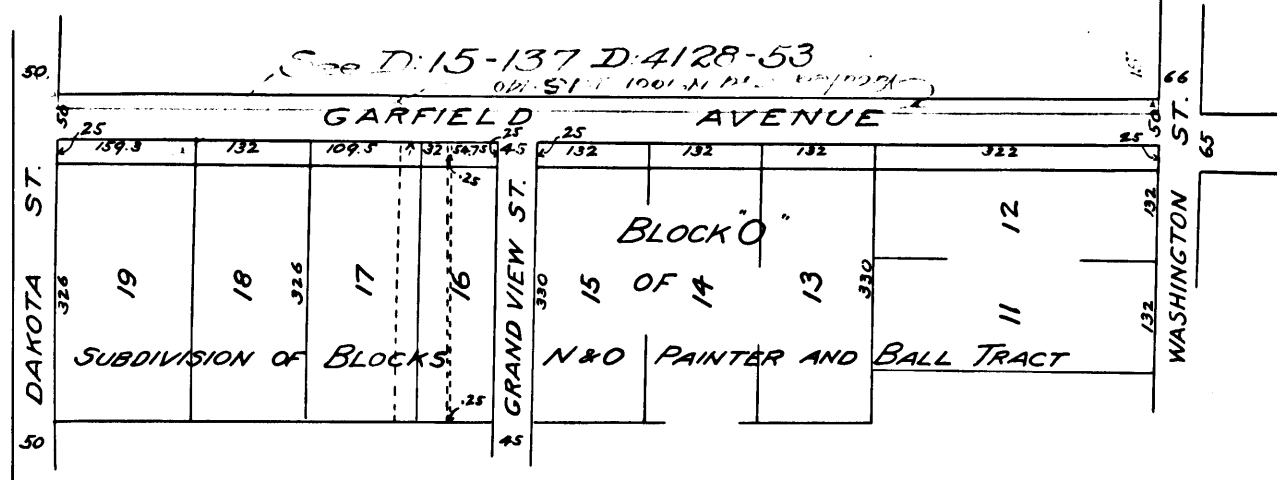


MAP

Showing land sought to be condemned for widening
OF
GARFIELD AVENUE
PASADENA CAL.

PASADENA, CAL.
APRIL, 1909.

S. J. VAN ORNUM
CITY ENGINEER



NOTE: SCALE: 1 IN. = 200 FT.
Orange lines show land sought to be condemned

EXHIBIT "C"

Stat. & Civ. No. 67443
City of Pasadena
vs.
T. M. Hayden & als.
Final judgment, Mar. 24, 1910
D:15-137.

C.F. 570 -