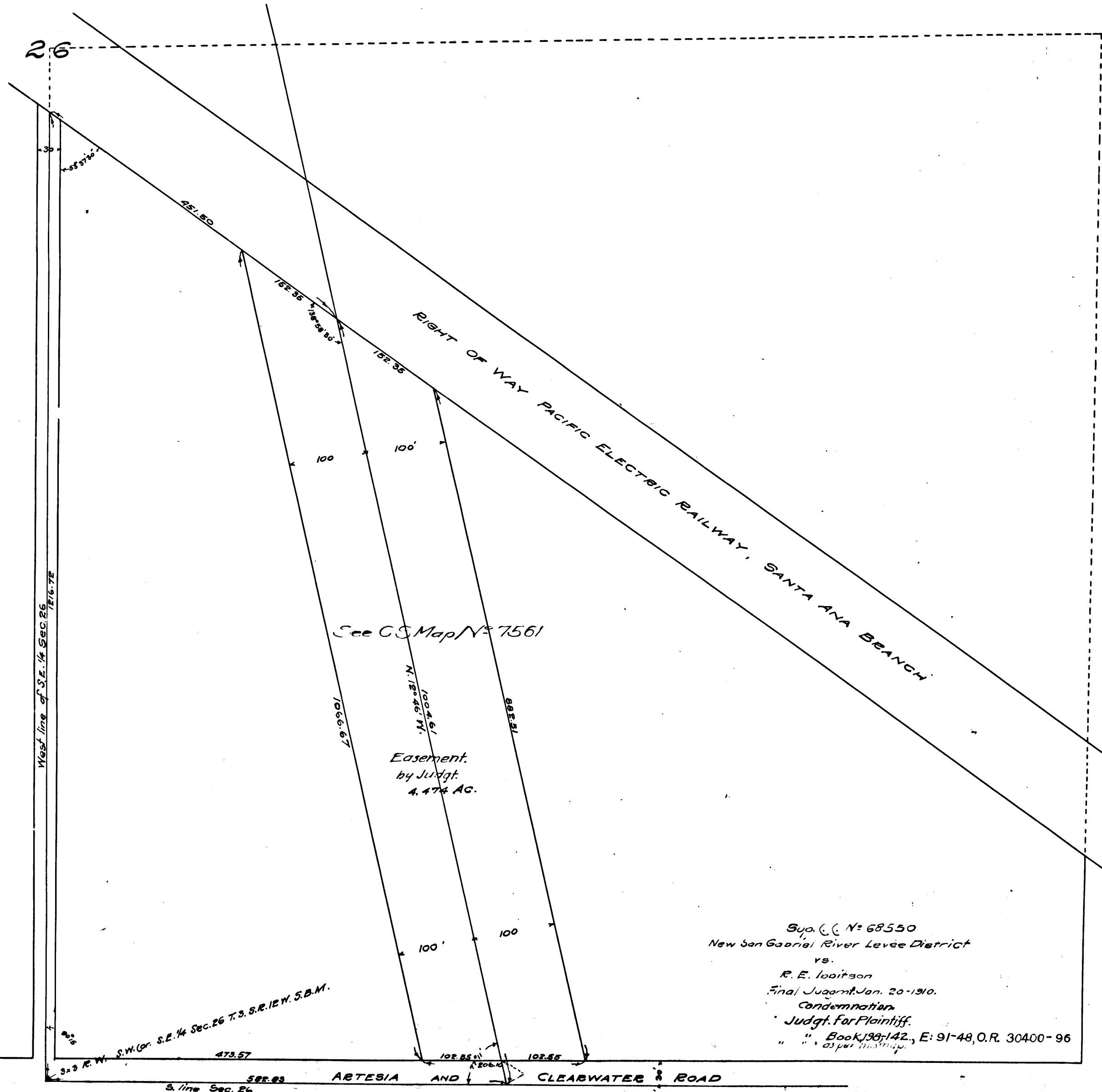




EXHIBIT "B"  
4.474 ACRES LAND OWNED BY IBBITSON  
TO BE ACQUIRED FOR  
NEW SAN GABRIEL RIVER CHANNEL  
Scale 1"=100'



C.F. 571

Syo. C. N= 68550  
New San Gabriel River Levee District  
vs.  
R. E. Ibbitson  
Final Judgment, Jan. 20-1910.  
Condemnation  
Judgt. for Plaintiff.  
" " Book 139, 142, E: 91-48, O.R. 30400-96  
" " 03 per 11/13/11

