

Search made  
On 1/18/18  
Proceedings pending under  
Ord. 17877 and 18065  
Proceedings under Ord. 18231

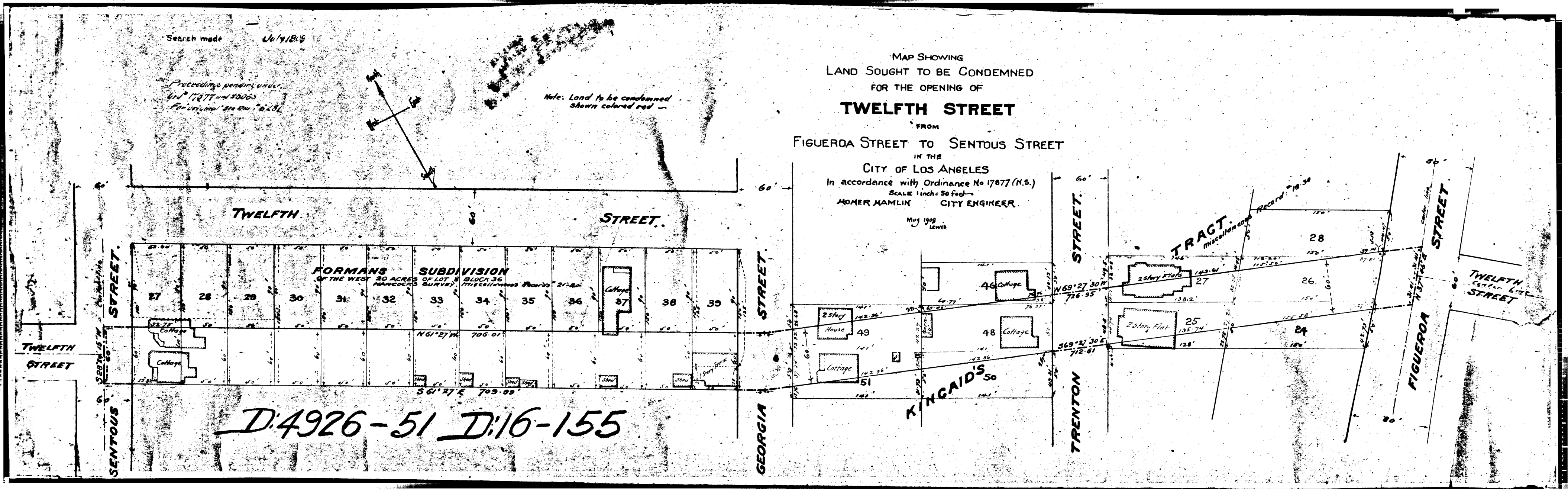
Note: Land to be condemned  
shown colored red -

MAP SHOWING  
LAND SOUGHT TO BE CONDEMNED  
FOR THE OPENING OF  
**TWELFTH STREET**

FROM  
FIGUEROA STREET TO SENTOUS STREET

IN THE  
CITY OF LOS ANGELES  
In accordance with Ordinance No 17877 (N.S.)  
SCALE 1 inch = 50 feet  
MOMER HAMLIN CITY ENGINEER.

May 1908  
Lewis



D:4926-51 D:16-155