

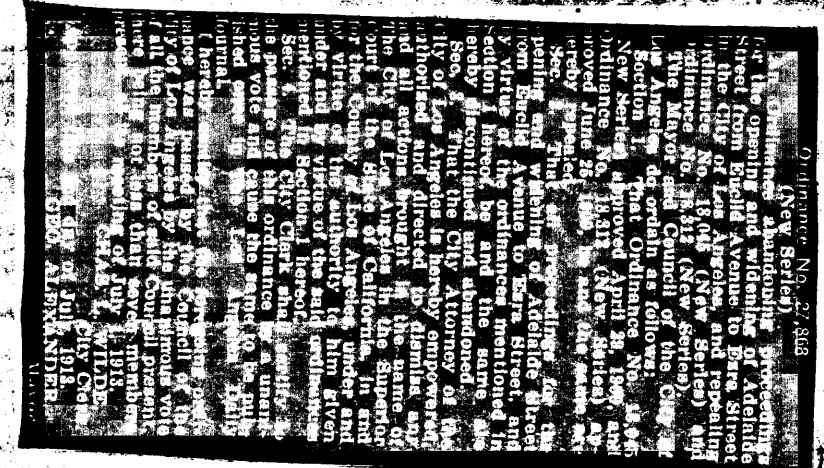
MAP  
SHOWING LAND TO BE CONDEMNED  
FOR THE OPENING AND WIDENING OF  
**ADELAIDE STREET**

FROM  
**EUCLID AVENUE** **EZRA STREET**

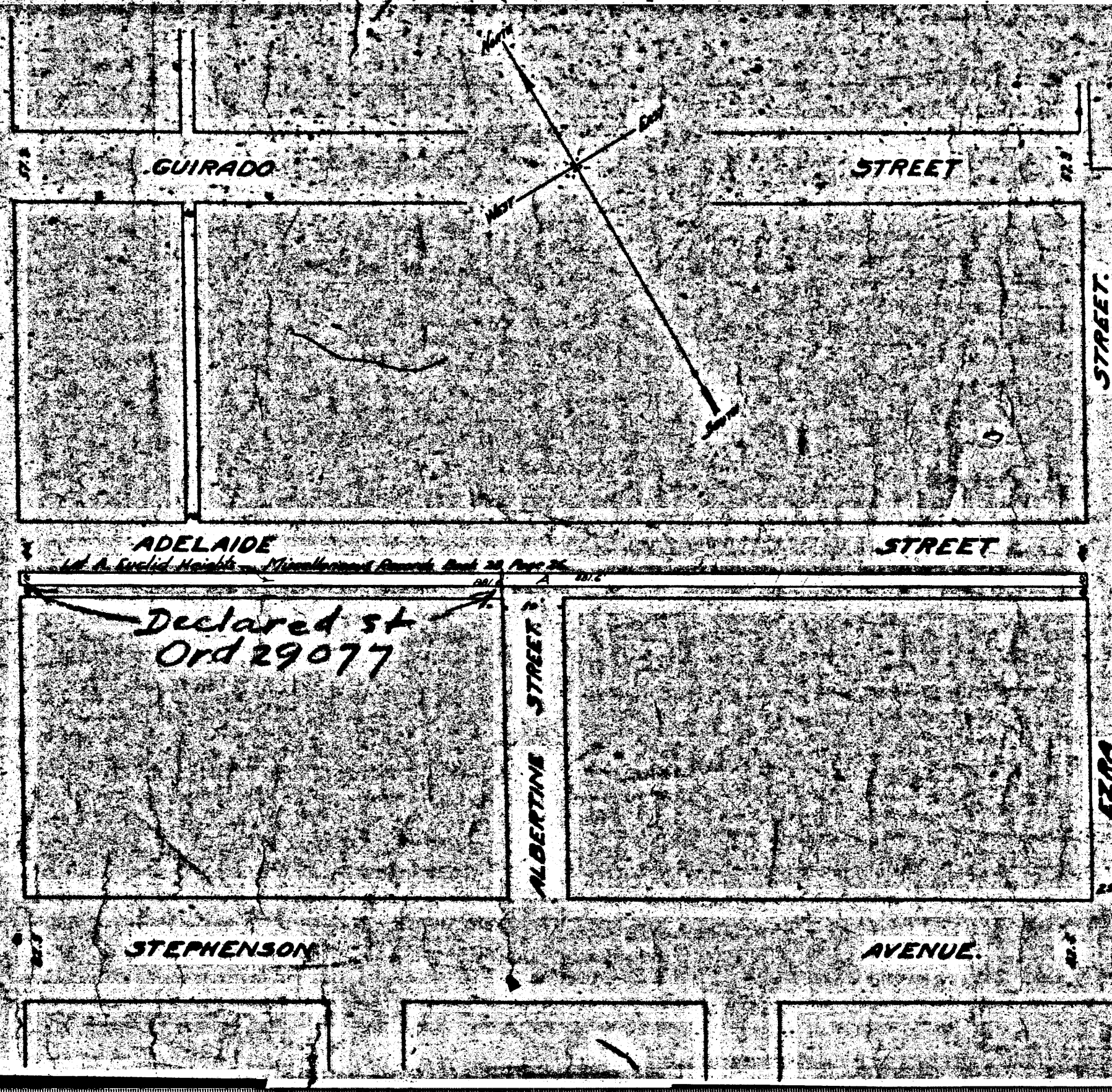
IN THE  
**CITY OF LOS ANGELES CAL.**  
in accordance with Ordinance N<sup>o</sup> 12095 (New Series)  
NOMER HAMLIN CITY ENGINEER. JULY 22, 1909.

Scale 1 inch = 100 feet

Note: Portion colored RED indicates land sought to be condemned.



Case pending May 10<sup>th</sup> 1921



058  
PROBABLE OF THE

378  
PROPERTY OF THE  
878

CF 576