

Sht-42
A-192

MAP

SHOWING LAND SOUGHT TO BE CONDEMNED FOR THE OPENING
OF

EMERSON STREET

PASADENA, CALIF.

Pasadena, Calif.
November, 1909.

S. J. Van Ornum,
City Engineer.

Scale: 1" = 100'

Note: Brown tinting shows land sought to be condemned.

Sup. C. Case No. 71299
City of Pasadena

Index #8

vs.
James H. Stalker et al.
interlocutory judgment, Book 209
P. 17, 1, 10
Condemnation.

Final judgment in favor of Plaintiff as per map
rendered Aug. 22, 1939
E:33-16, O.R. 16905-28

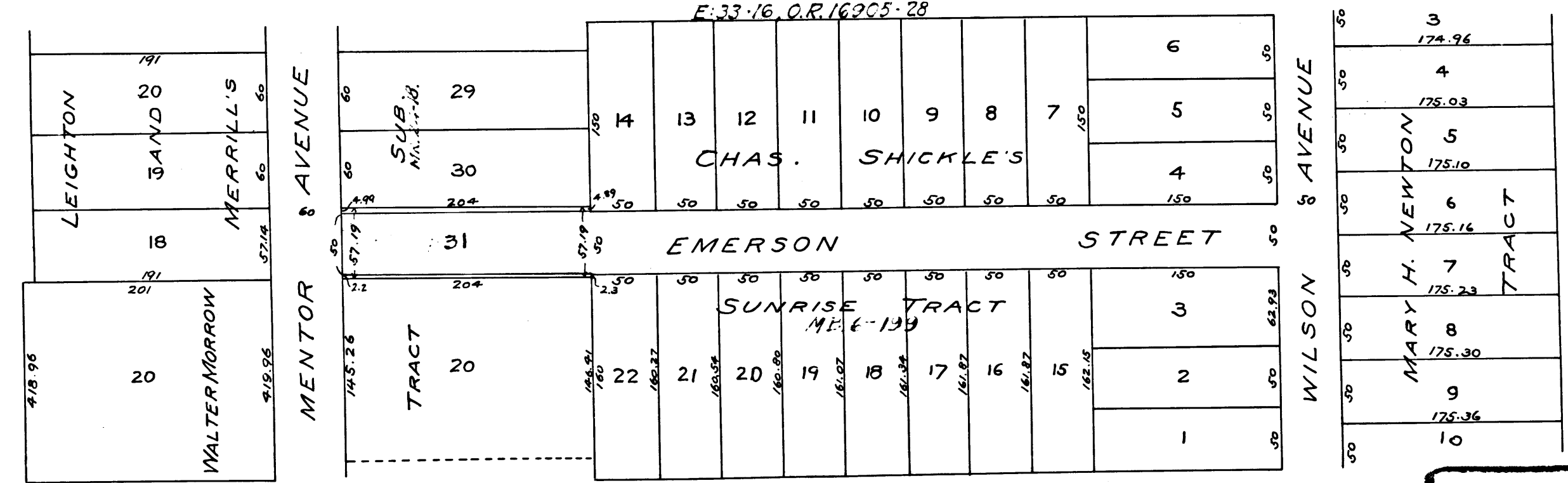


EXHIBIT 'C'

C.F. 584 -

