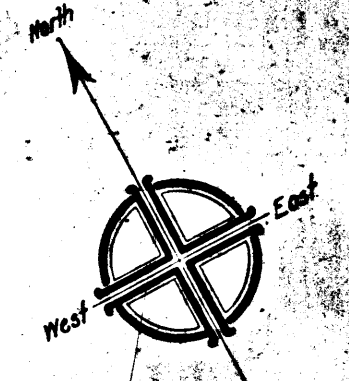


CITY OF LOS ANGELES
PROPERTY OF THE



STERN TRACT
Miscellaneous Records Book 60 Page 64

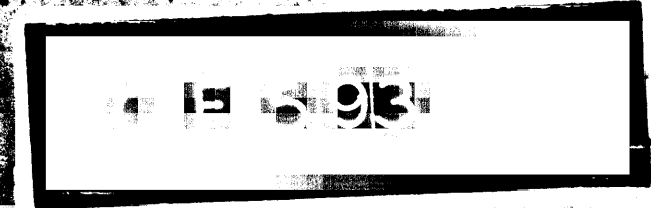
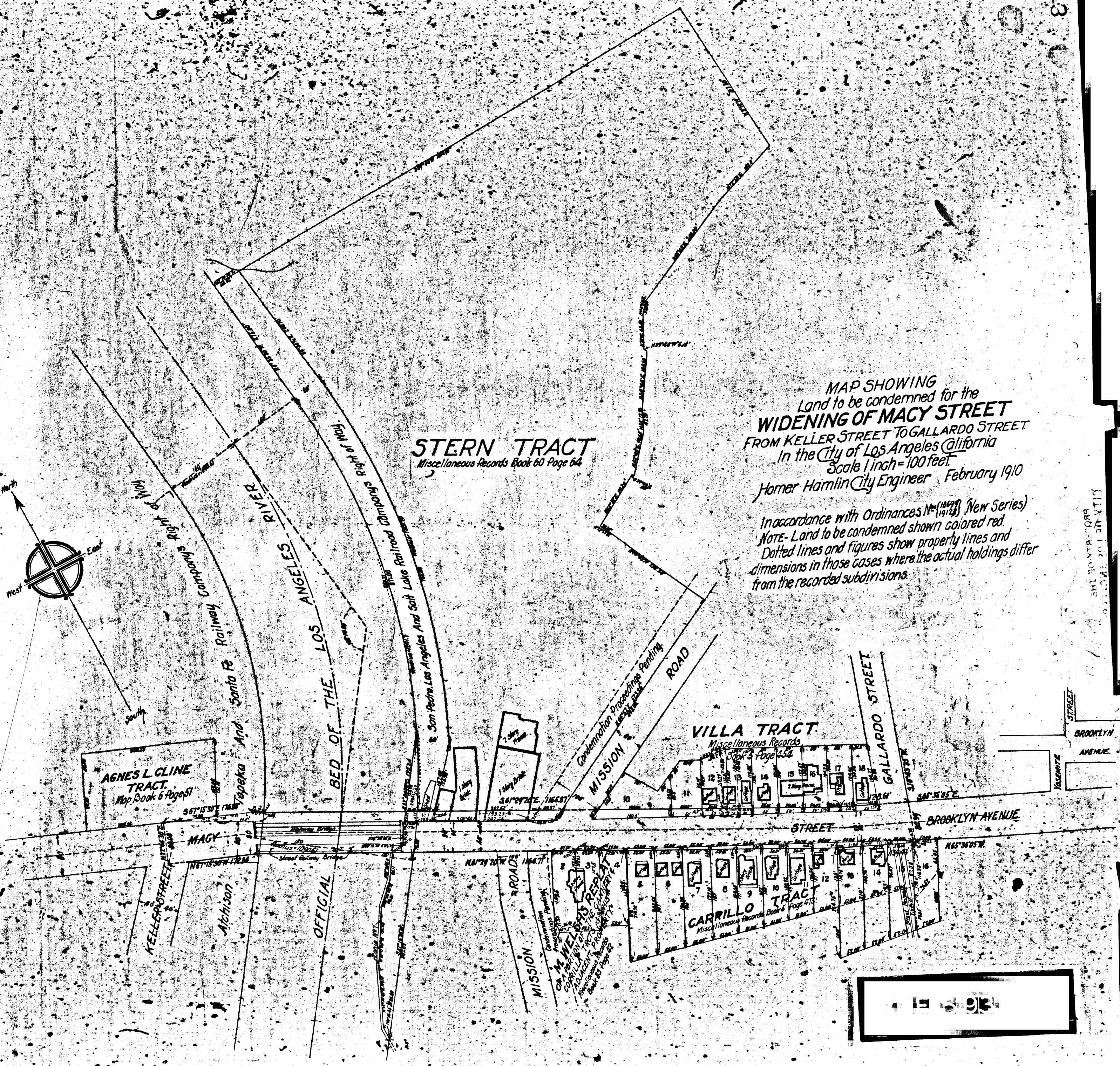
MAP SHOWING
Land to be condemned for the
WIDENING OF MACY STREET
FROM KELLER STREET TO GALLARDO STREET
In the City of Los Angeles California
Scale 1 inch = 100 feet
Homer Hamlin City Engineer February 1910

In accordance with Ordinances No. 10697 (New Series)
NOTE - Land to be condemned shown colored red.
Dotted lines and figures show property lines and
dimensions in those cases where the actual holdings differ
from the recorded subdivisions.

AGNES L. CLINE TRACT
Map Book 6 Pages 51

VILLA TRACT
Miscellaneous Records Book 43 Page 43

CARRILLO TRACT
Miscellaneous Records Book 4 Page 4



CITY OF LOS ANGELES
PROPERTY OF THE