

MAP

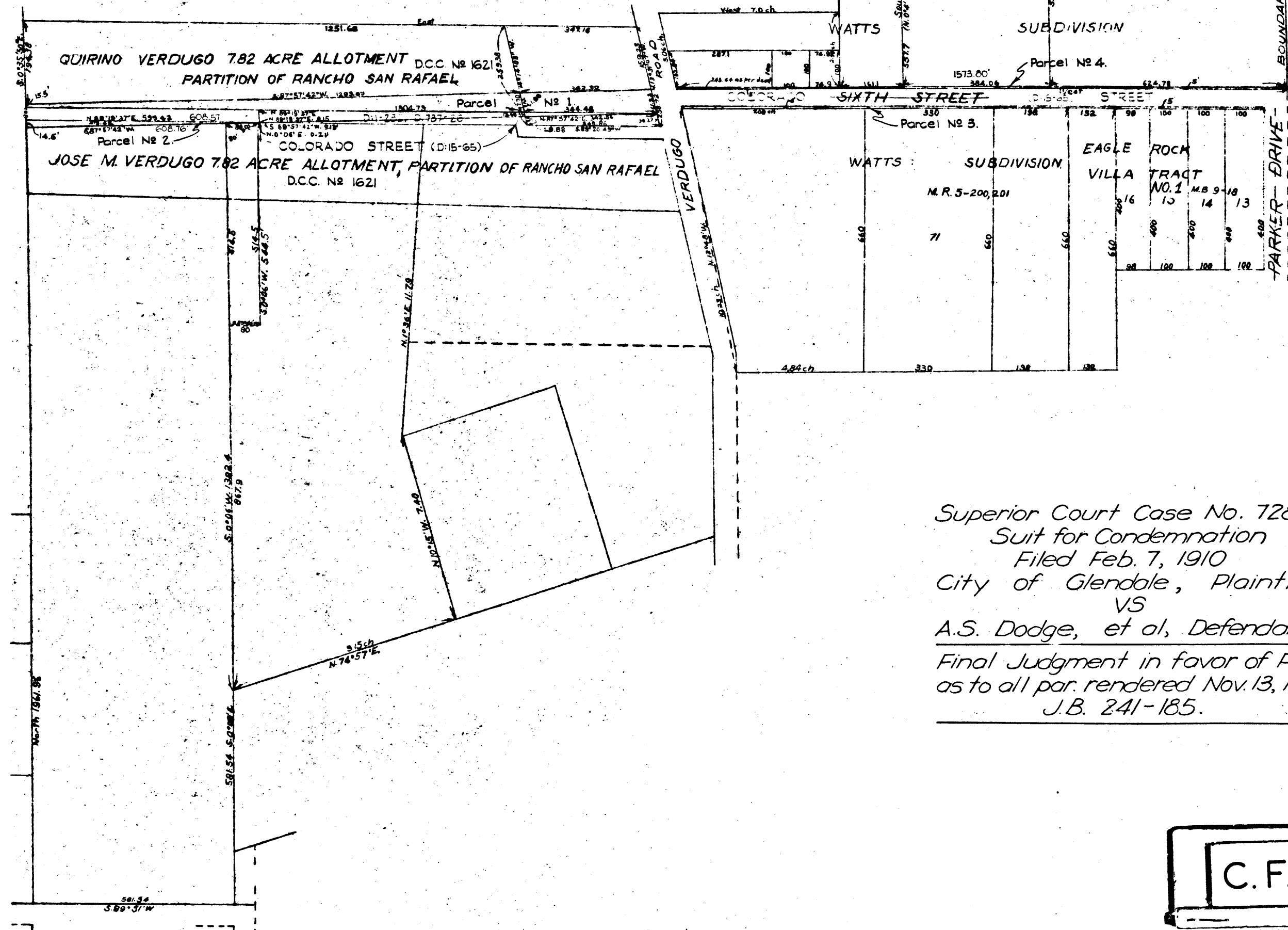
showing land sought to be condemned for the opening and widening of
SIXTH STREET
between the easterly boundary line of the City of Glendale and the easterly line of
the Childs' Tract, a portion of the Rancho San Rafael
in the City of Glendale
in accordance with ordinance No 113

Scale 200' = 1"

Edward M Lynch, City Engineer

January 1910

NOTE: Land sought to be condemned
shown colored red
Note: Brown notes are from Judgment
County Surveyor.



Superior Court Case No. 72880
Suit for Condemnation
Filed Feb. 7, 1910
City of Glendale, Plaintiff
VS
A.S. Dodge, et al, Defendants
Final Judgment in favor of Pltff.
as to all par. rendered Nov. 13, 1911
J.B. 241-185.

C.F. 594 -