

CITY OF LOS ANGELES
EAST BOYLE HEIGHTS MAIN SEWER AND OTHER SEWERS
 PLAN SHOWING
 PROPOSED RIGHT OF WAY ACROSS PRIVATE PROPERTY
 BETWEEN VENICE AVENUE AND PERCY STREET

Scale 1" = 100' Homer Hamlin City Engineer JUNE 1908

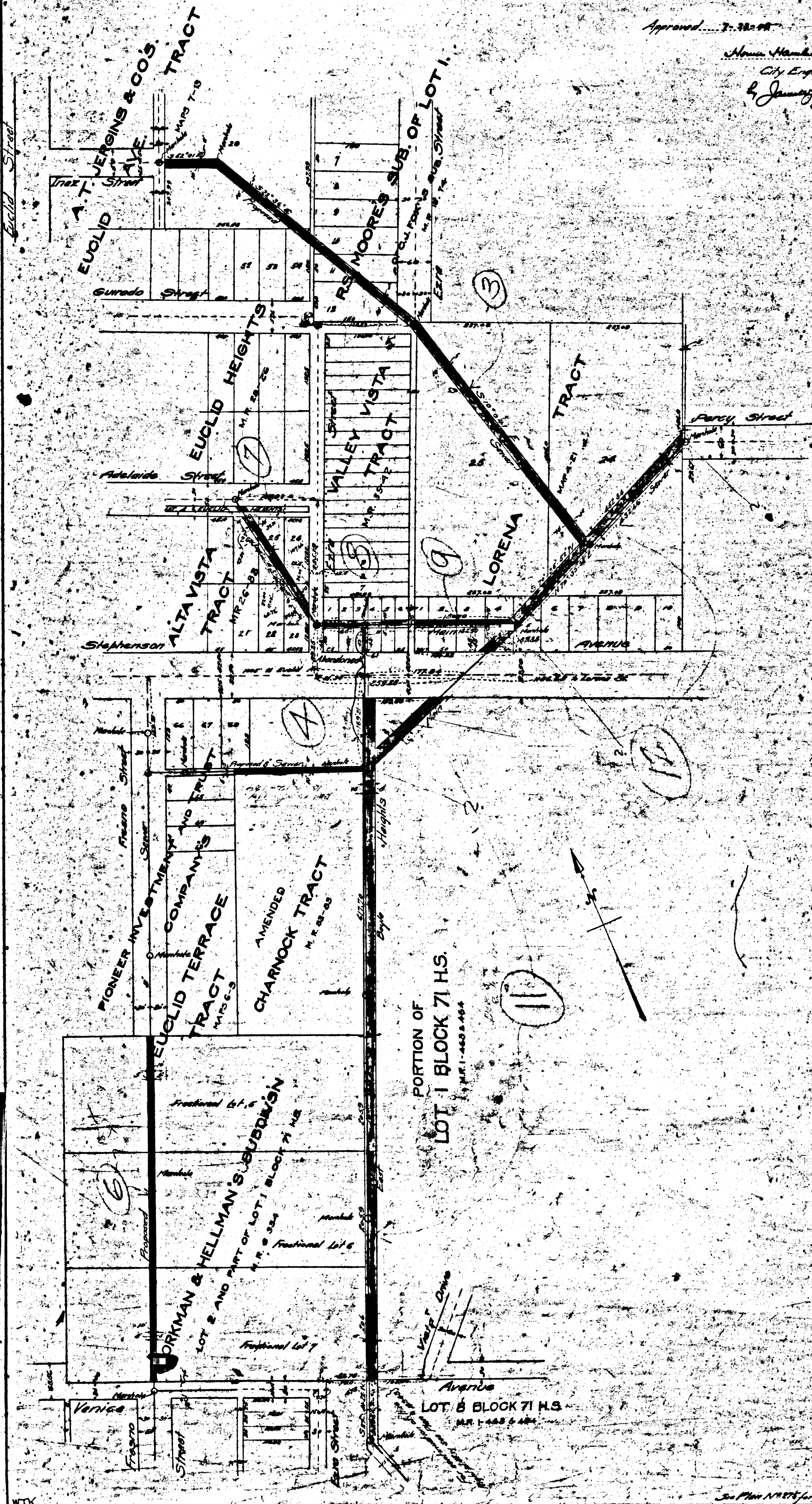
Field Book 2744 Page 1-32
 Calc. Book 22 178

Drawn by Thomas
 Checked by James July 18 08

Notes
 Sewer to be not less than 4 feet deep Right of way shown by red line

Approved July 28 08

Homer Hamlin
 City Engineer
 by James Johnson
 Chief Draftsman



16

WTK

See Plan N-878 for drainage details