

10TH

9 5 7

VEMCO
PASADENA, CAL.

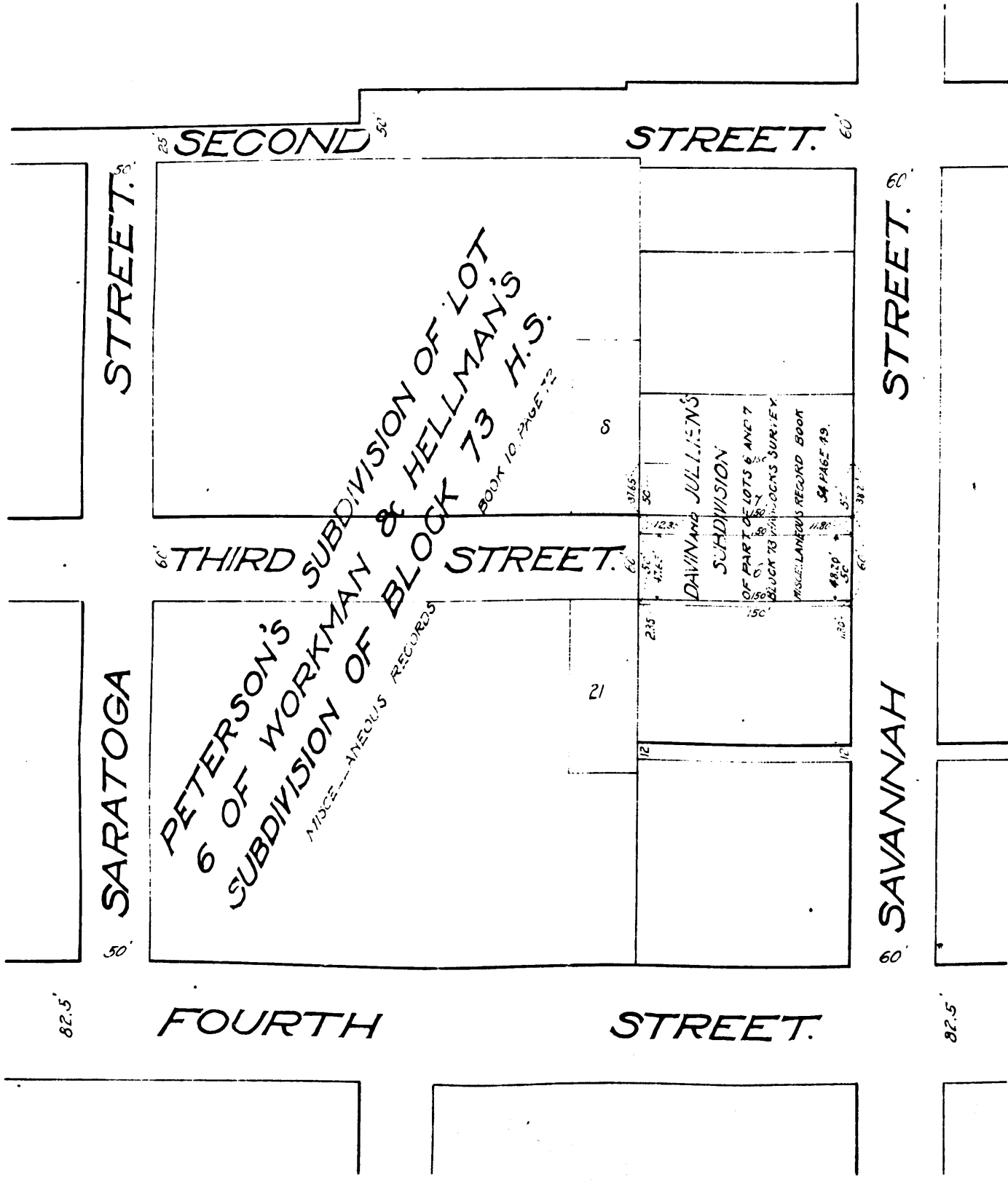
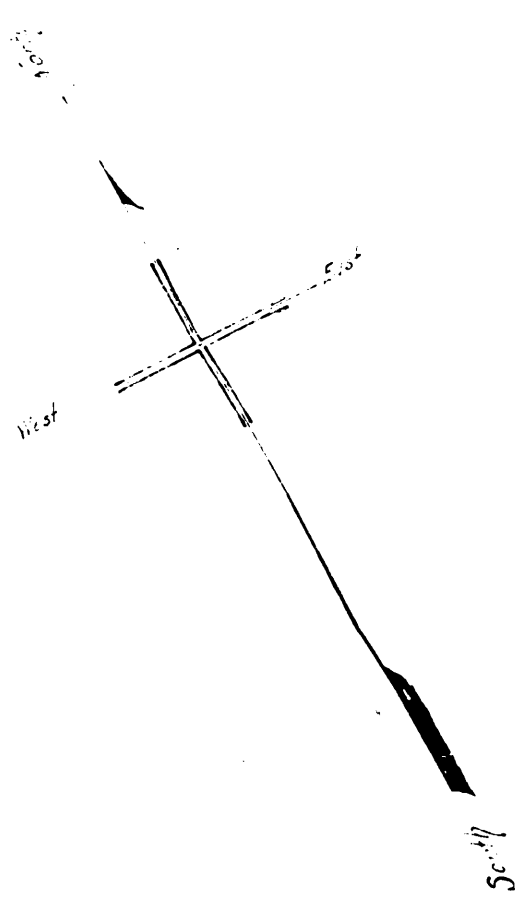
M.A.P.
 SHOWING THE LAND TO BE CONDEMNED
 FOR THE OPENING OF
THIRD STREET
 BETWEEN SARATOGA STREET AND
 SAVANNAH STREET
 CITY OF LOS ANGELES, CAL.
 In accordance with Ordinances Nos. 25262 and 25561 (New Series)
 HOMER HAMLIN CITY ENGINEER August 1912.
 Scale 1" = 100 feet

91252
 City of Los Angeles
 vs.
 W.L. Craig, et al
 Interlocutory Decree
 12-19-12

NOTE: Land to be condemned colored red.

25262
 25561

None



C.F. 700

50TH

VEMCO
PASADENA, CAL.

9 5 7

10TH