

MAP AND DIAGRAM

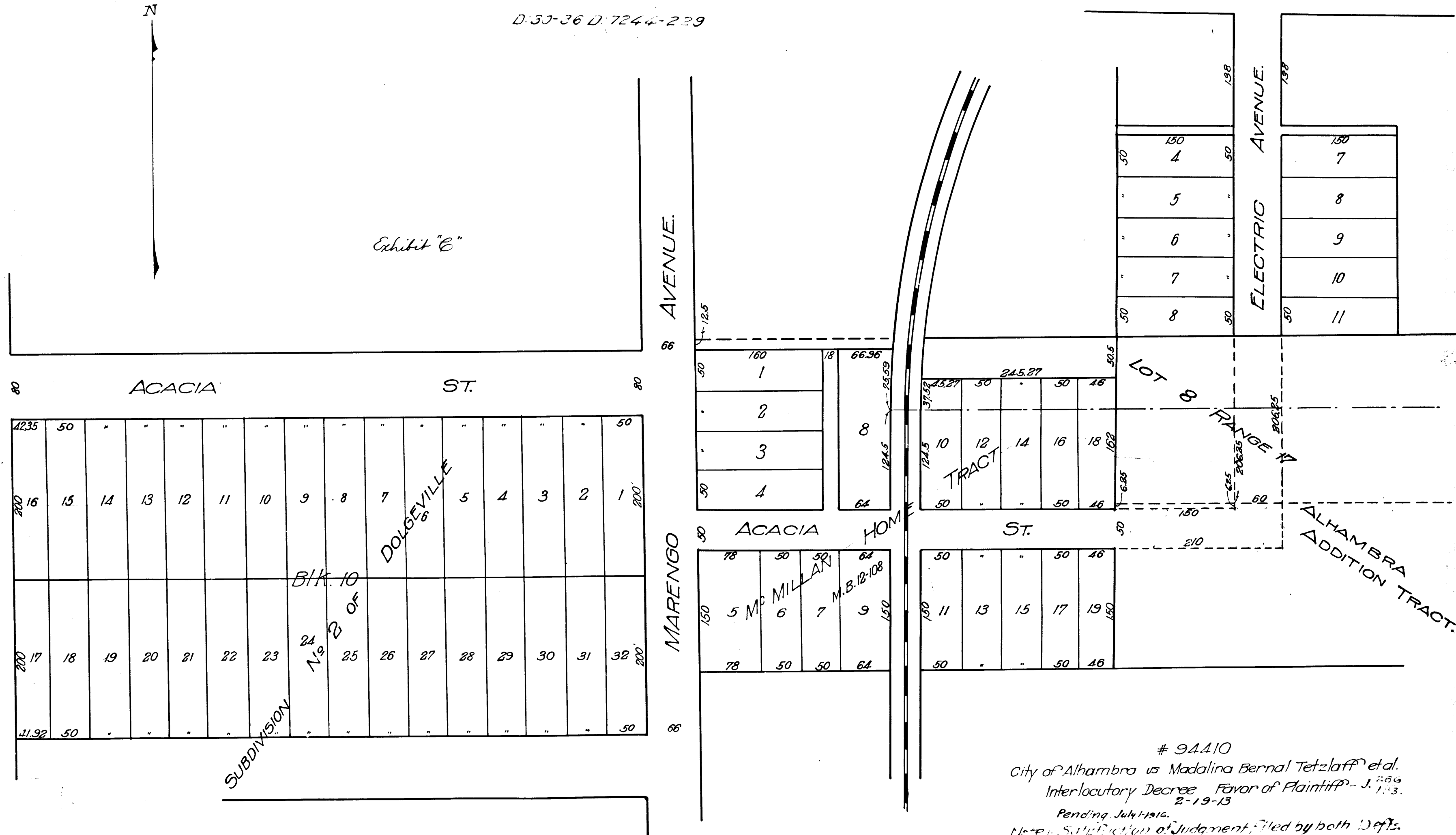
Showing the land to be taken and condemned for the opening of Electric Ave in the City of Alhambra California from the Northerly line of Lot eight (8) Range seventeen (17) Alhambra Addition Tract to a point 212.5 feet southerly. Also Acacia St. from the Westerly line of Lot 8 Range 17 Alhambra Addition Tract to a point 210 feet Easterly as per Ordinance 598.

Hereon figures in black ink next to property lines show each the length of said lines in feet, other figures in black show the numbers of the lots.

Solid black lines show original lot lines. Dotted lines bounded in mauve tint show land to be taken for the opening of said street.

The diagram is drawn to a scale of 100 feet to one inch.

D. 33-36 D. 7244-229



94410
 City of Alhambra vs Madalina Bernal Tetzloff et al.
 Interlocutory Decree Favor of Plaintiff - J. 1, 3.
 Pending July 1916.
 Note: Satisfaction of Judgment, Filed by both Defts.
 Prior to Dec. 1st, 1913.
 Final judgement rendered June 30, 1920
 as per Map, in favor of Plaintiff.

C.F. 701 -

VEMCO PASADENA CAL.

VEMCO PASADENA CAL.

9 5 7

9 5 6

10TH

10TH