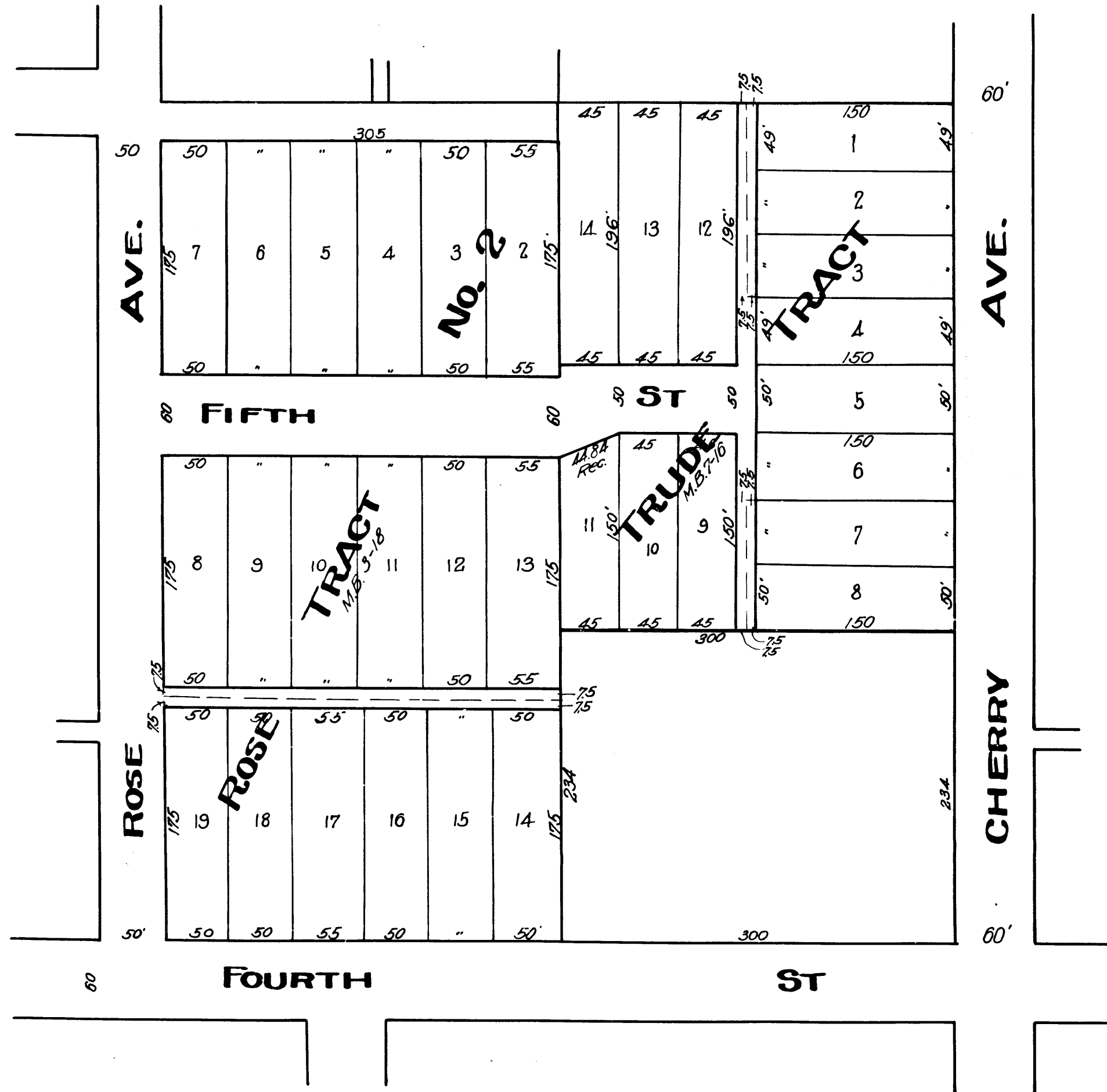


MAP  
 Showing  
 Land to be taken for opening of Fifth St.  
 & District benefitted. E.P. Dewey City Engineer.  
 Jan. 1912

Scale 1 in = 100 feet.

Exhibit 'C'



C.F. 703

# 95318  
 City of Long Beach vs. W.S. Taggart et al.  
 Interlocutory Decree - Favor of Plaintiff.  
 2-6-13  
 Final Judgment in favor of Plaintiff June 25, 1919, for Lot 5, Trude Tract.  
 D: 59-195 O.R. 6652-369.

VEMCO  
 PASADENA, CAL.

VEMCO  
 PASADENA, CAL.

LS 6

LS 6

10TH

10TH