

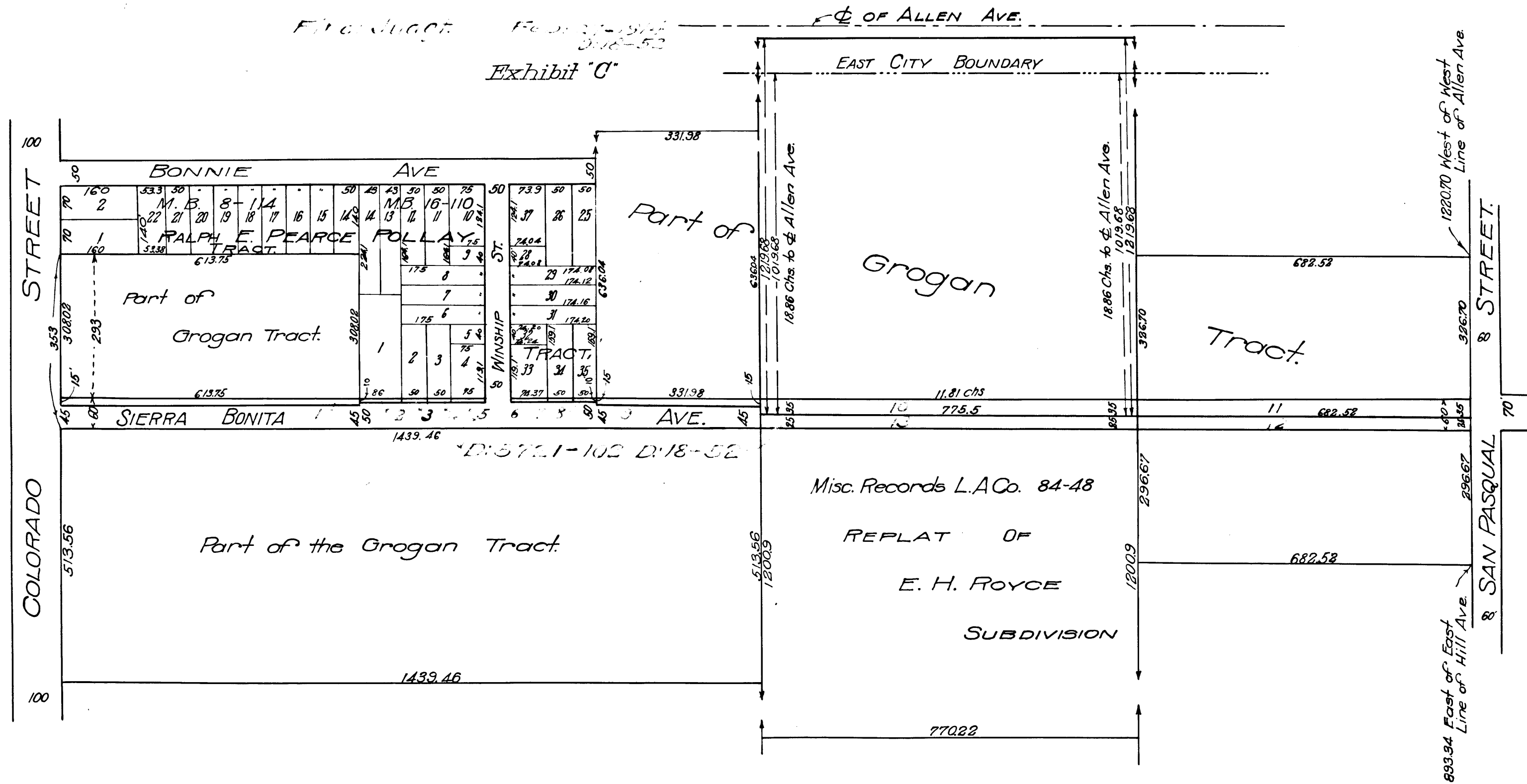
MAP
 Showing land sought to be condemned for the widening, opening and extending of
SIERRA BONITA AVENUE.

From the south line of Colorado Street to the north line of San Pasqual Street.
PASADENA, CALIFORNIA

Note: Shaded portion shows land sought to be condemned.
 Pasadena, California. S.J. VAN ORNUM
 October 1912. City Engr.

Scale 1"=200'

Final Judgment Favor of Plaintiff
 Feb. 27-14
 Exhibit "C"



N
 # 95381
 City of Pasadena vs. Francisca Heslop et al.
 Interlocutory Decree- Favor Plaintiff.
 3-5-13
 Final Judgment-Favor of Plaintiff. Feb. 27-14
 See D:18-52

C.F. 704

VEMCO
PASADENA, CAL.

9 5 7

10TH

VEMCO
PASADENA, CAL.

L 5 6

10TH