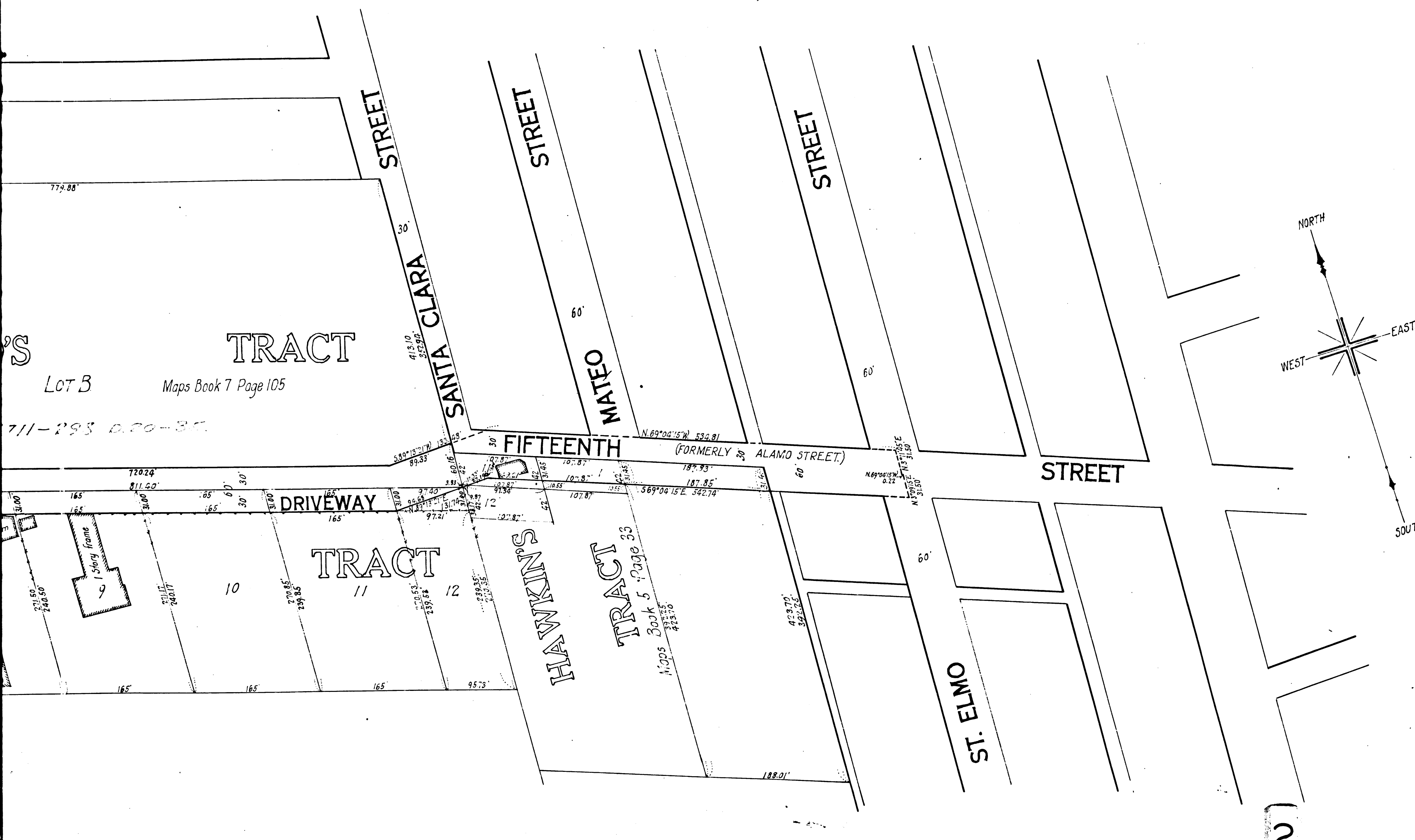


For Judgment see D:5711-298 D.20-85.

INDUSTRIAL

C.F. 705 -



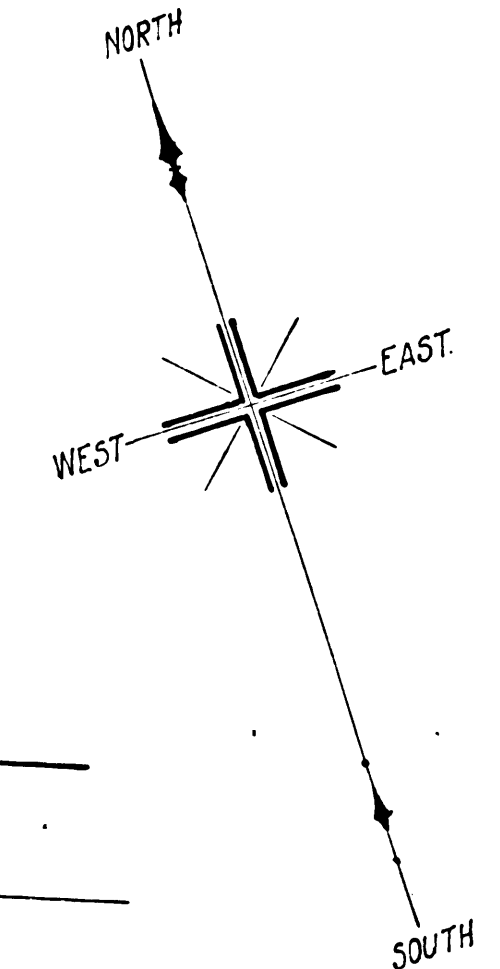
'S
 LOT 3
 Maps Book 7 Page 105
 711-293 0.00-35

TRACT

TRACT

HAWKINS' TRACT

Maps Book 5 Page 33



ST
 FI
 ST. ELMO

In accor
HOME

2

C.F.	705	-
------	-----	---

95612
 City of Los Angeles
 vs.
 J.G. Scarborough, et al.
 Interlocutory Decree
 6-23-13
 Final Judgt. Mar. 16-1914
 D: 20-85.

MAP
 SHOWING LAND TO BE CONDEMNED FOR
 THE OPENING AND WIDENING
 OF
FIFTEENTH STREET
 BETWEEN
ST. ELMO STREET AND ALAMEDA STREET
 IN THE
 CITY OF LOS ANGELES CAL.

In accordance with Ordinances Nos 25260 and 25562 (New Series)
 HOMER HAMLIN, City Engineer. September 1912
 Scale 100 feet to 1 inch.

NOTE. Land to be condemned shown colored red
 Dotted lines and figures show where the actual holdings differ
 from the recorded subdivision.

STATUS OF PROCEEDINGS
 Proceedings begun 2-13-12 under Council order 24985
 Ordinances (Intention 25260
 (Suppl. 25562
 Interlocutory Decree
 Final Judgment
 Original map 1108 Consummation map

3

C.F. 705

