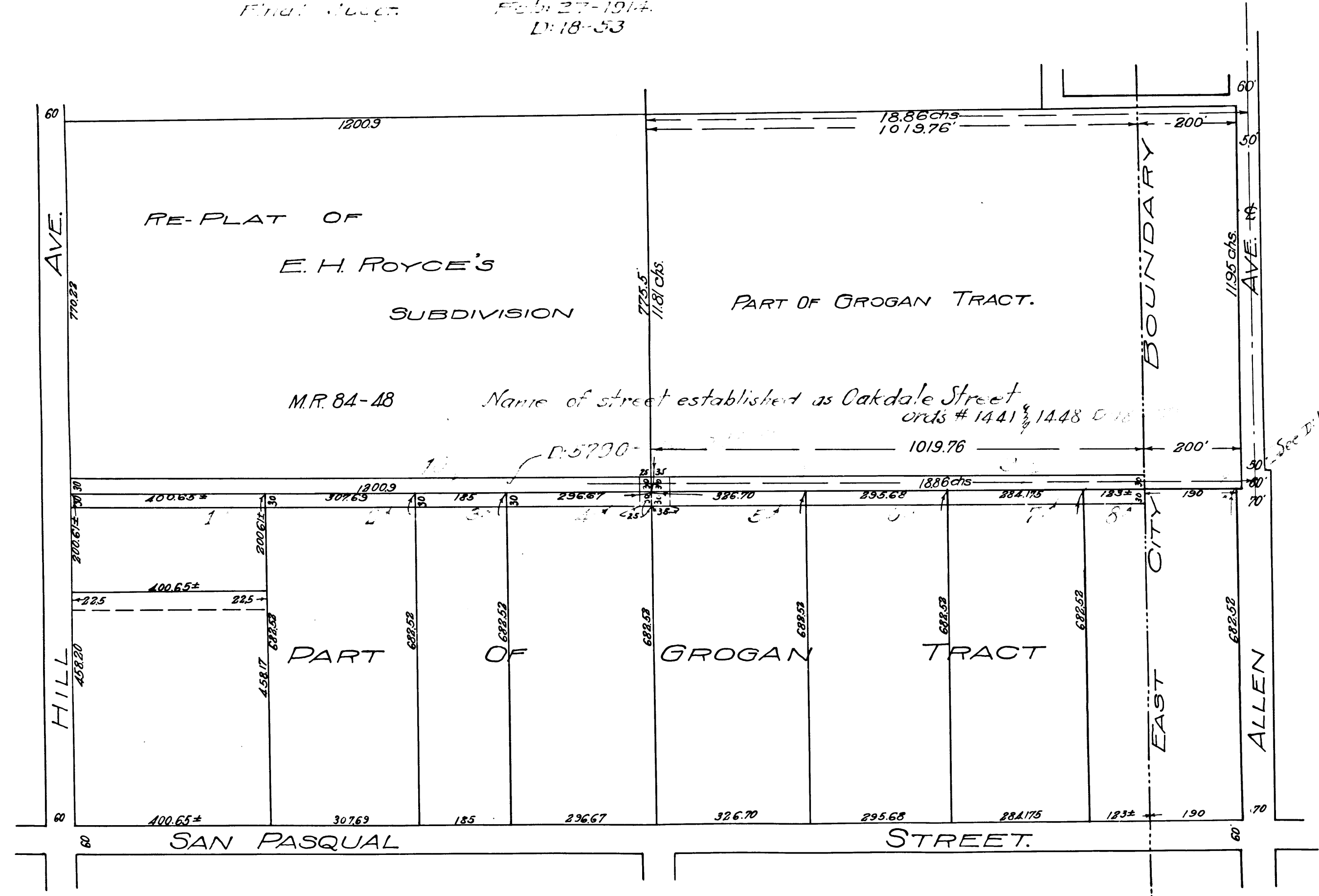


MAP
 SHOWING LAND SOUGHT TO BE CONDEMNED FOR THE OPENING OF A STREET
 FROM HILL AVENUE TO THE EAST BOUNDARY LINE OF THE CITY OF
 PASADENA, BETWEEN COLORADO STREET AND SAN PASQUAL STREET
 PASADENA, CALIFORNIA. OCTOBER 1912

S. J. VAN ORNUM.

EXHIBIT "C" SHADDED PORTION SHOWS LAND SOUGHT TO BE CONDEMNED. CITY ENGR

SCALE 1"=200'
 Final Maps Filed Feb. 27-1914.
 D: 18-53



96138
 City of Pasadena vs H. Martin Cole, et al.
 Interlocutory Decree
 Favor of Plaintiff.
 3-5-13

C.F. 706 -

MEMCO PASADENA, CAL.

MEMCO PASADENA, CAL.

10TH 9 5 7

10TH 9 5 7