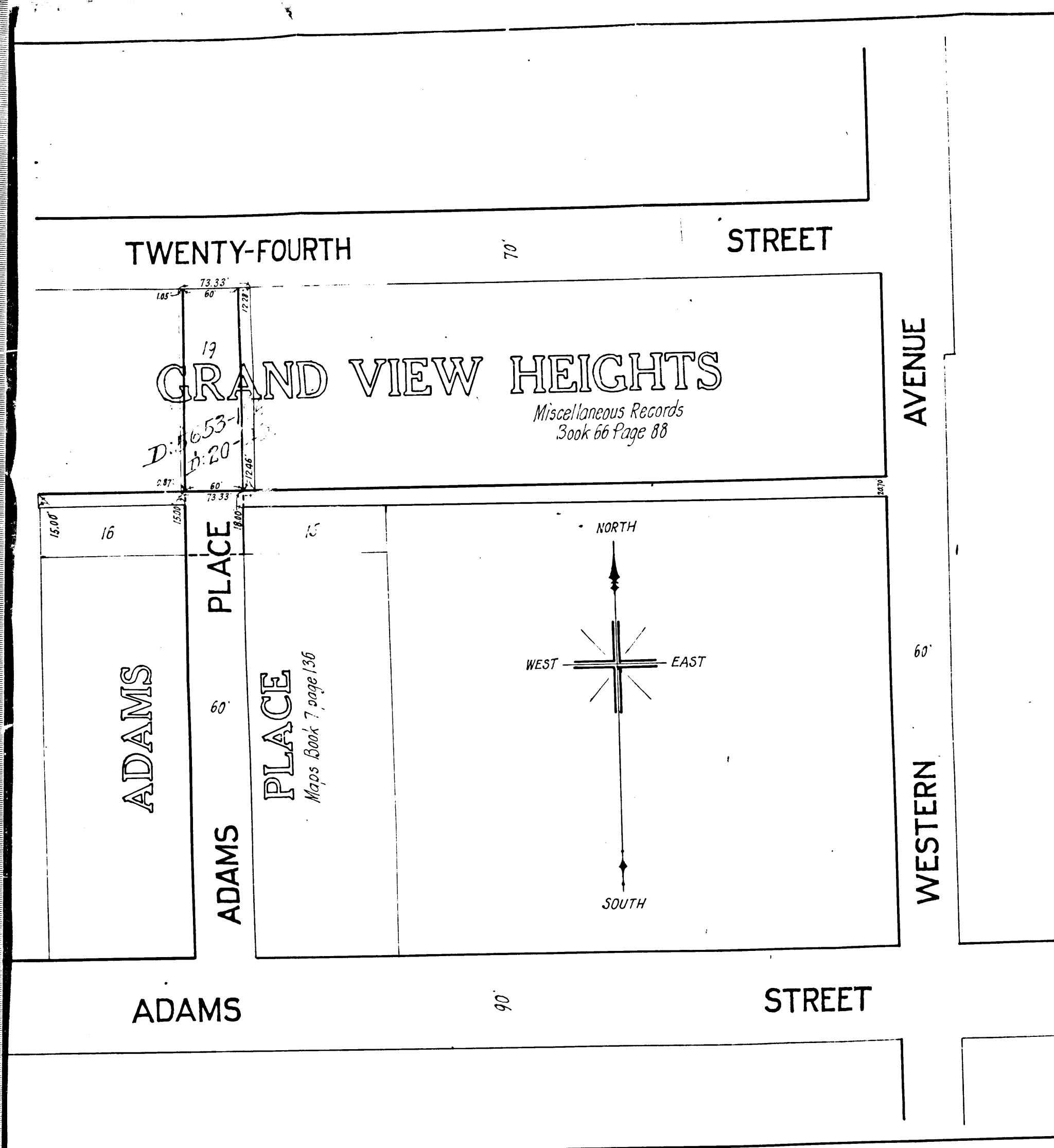
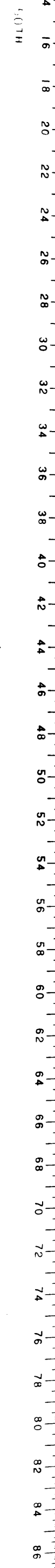


VEMCO
PASADENA, CAL.

957

10TH



TWENTY-FOURTH STREET 70'

GRAND VIEW HEIGHTS
*Miscellaneous Records
Book 66 Page 88*

16

ADAMS

19

ADAMS PLACE 60'

15

ADAMS PLACE
Maps Book 7 page 136

70'

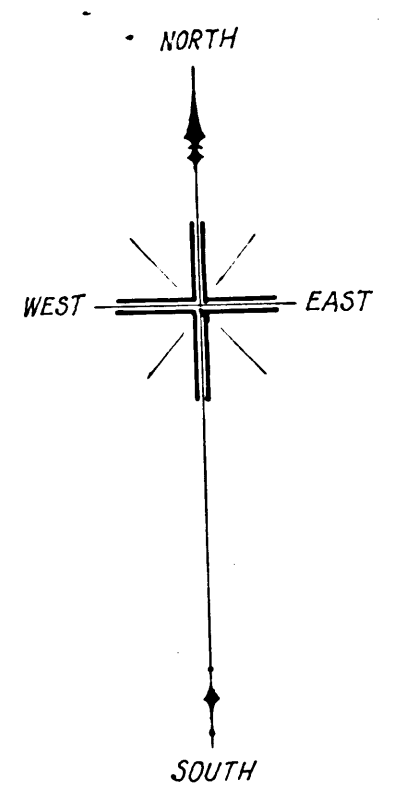
90'

STREET

STREET

AVENUE

WESTERN



96310
City of Los Angeles
vs
Brady Janss Inv. Co et al
Interlocutory Decree
4-16-13

MAP
SHOWING THE LAND TO BE CONDEMNED
FOR THE OPENING OF
ADAMS PLACE
FROM ITS NORTHERLY TERMINUS NORTH OF
ADAMS STREET
TO
TWENTY-FOURTH STREET
CITY OF LOS ANGELES, CAL.

In accordance with Ordinances Nos. 25647 and 26062 (New Series)
HOMER HAMLIN, City Engineer
October 1912
SCALE 100 FEET TO 1 INCH

NOTE: Land to be condemned shown colored red.

Final Judgment Case No. 10-1912
D: 20-13

Ordinance No. 25753
Ordinance No. 25647
Ordinance No. 26062
City Engineer
City of Los Angeles
None

C.F. 707 -

10TH

VEMCO
PASADENA, CAL.

956

10TH

