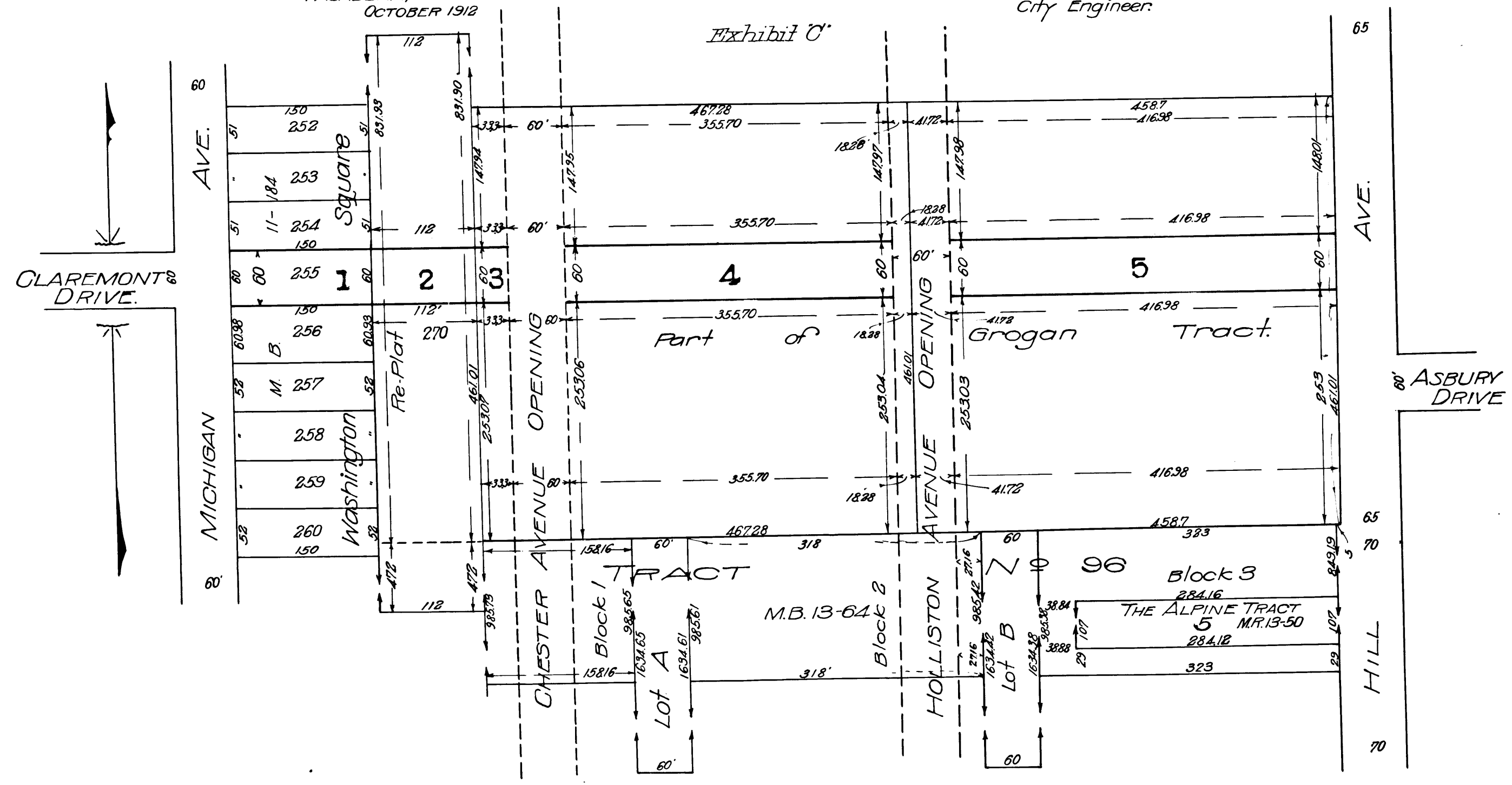


**MAP**  
 Showing land sought to be condemned for the opening and extending of  
**CLAREMONT DRIVE**  
 From the east line of Michigan Avenue to the west line of Hill Avenue  
 Pasadena, California.  
 Note: Shaded portion shows land sought to be condemned.

PASADENA, CALIFORNIA.  
OCTOBER 1912

Scale 1"=100'  
Exhibit C'

S. IVAN ORNUM  
City Engineer.



# 96372  
 City of Pasadena vs. Etta Vincent et al.  
 Interlocutory Decree - Favor of Plaintiff.  
 9-5-13

C.F. 710 -