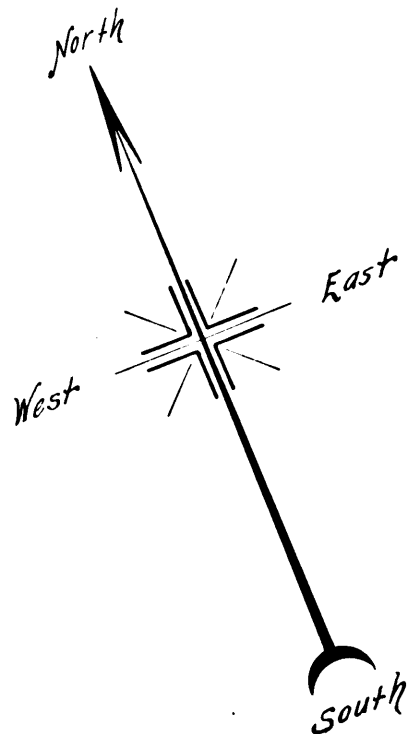


**MAP**  
 SHOWING THE LAND TO BE CONDEMNED  
 FOR THE OPENING AND WIDENING OF  
**SIXTH AVENUE**  
 BETWEEN  
**PICO STREET AND DORCHESTER AVENUE**  
 IN THE  
**CITY OF LOS ANGELES CAL.**

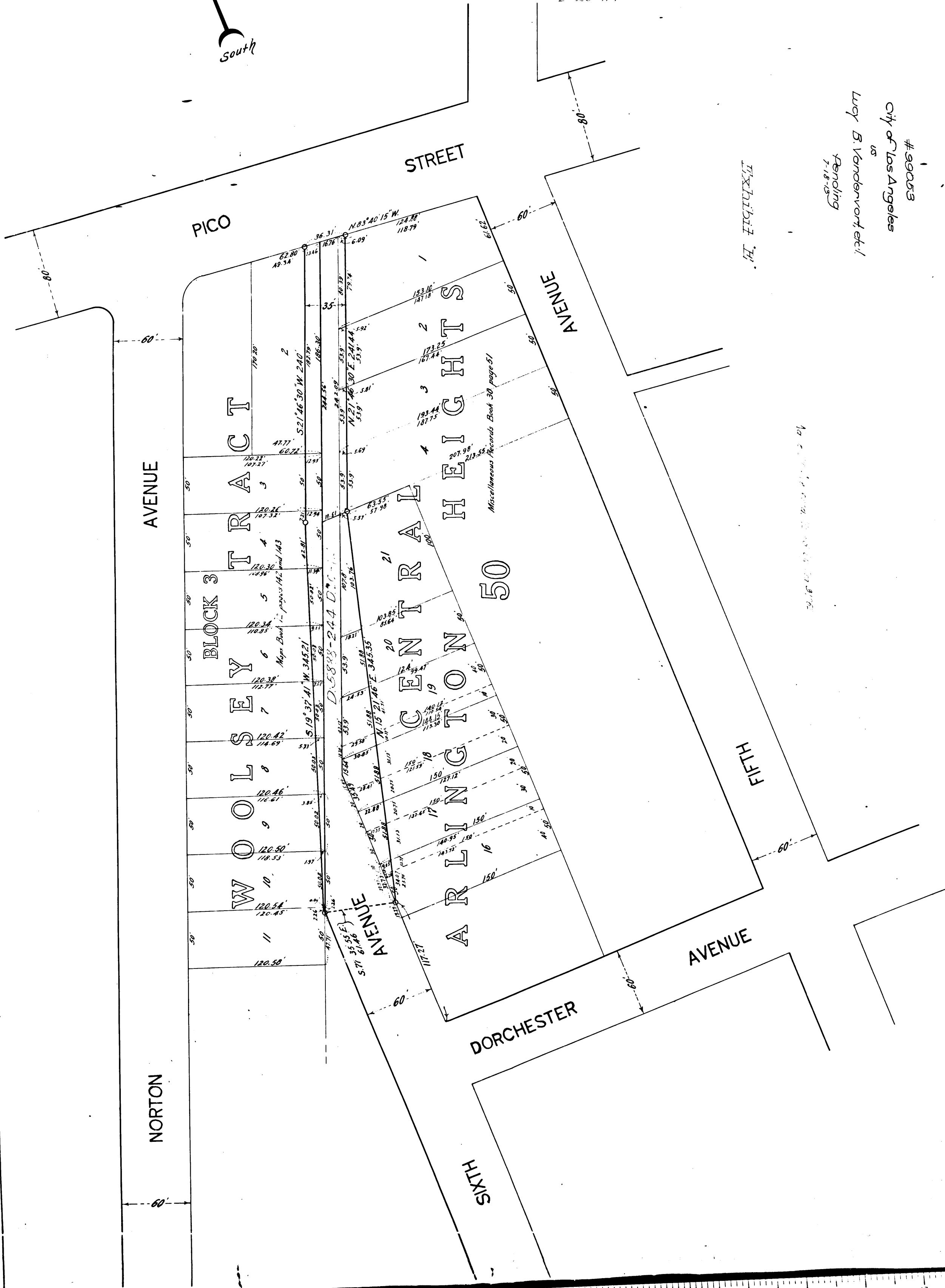
*In accordance with Ordinances Nos. 26156 and 26597 (New Series)  
 HOMER HAMLIN, City Engineer      February 1913  
 Scale 50 feet to 1 inch*

*NOTE: Land to be condemned shown colored red.  
 Dotted lines and figures show property lines and dimensions in those cases  
 where the actual holdings differ from the recorded subdivisions.*



6380  
 17111  
 500-21-1011  
 1500-11

#99003  
 City of Los Angeles  
 by B. Vandervort et al.  
 Pending  
 7-18-13



C.F. 723