



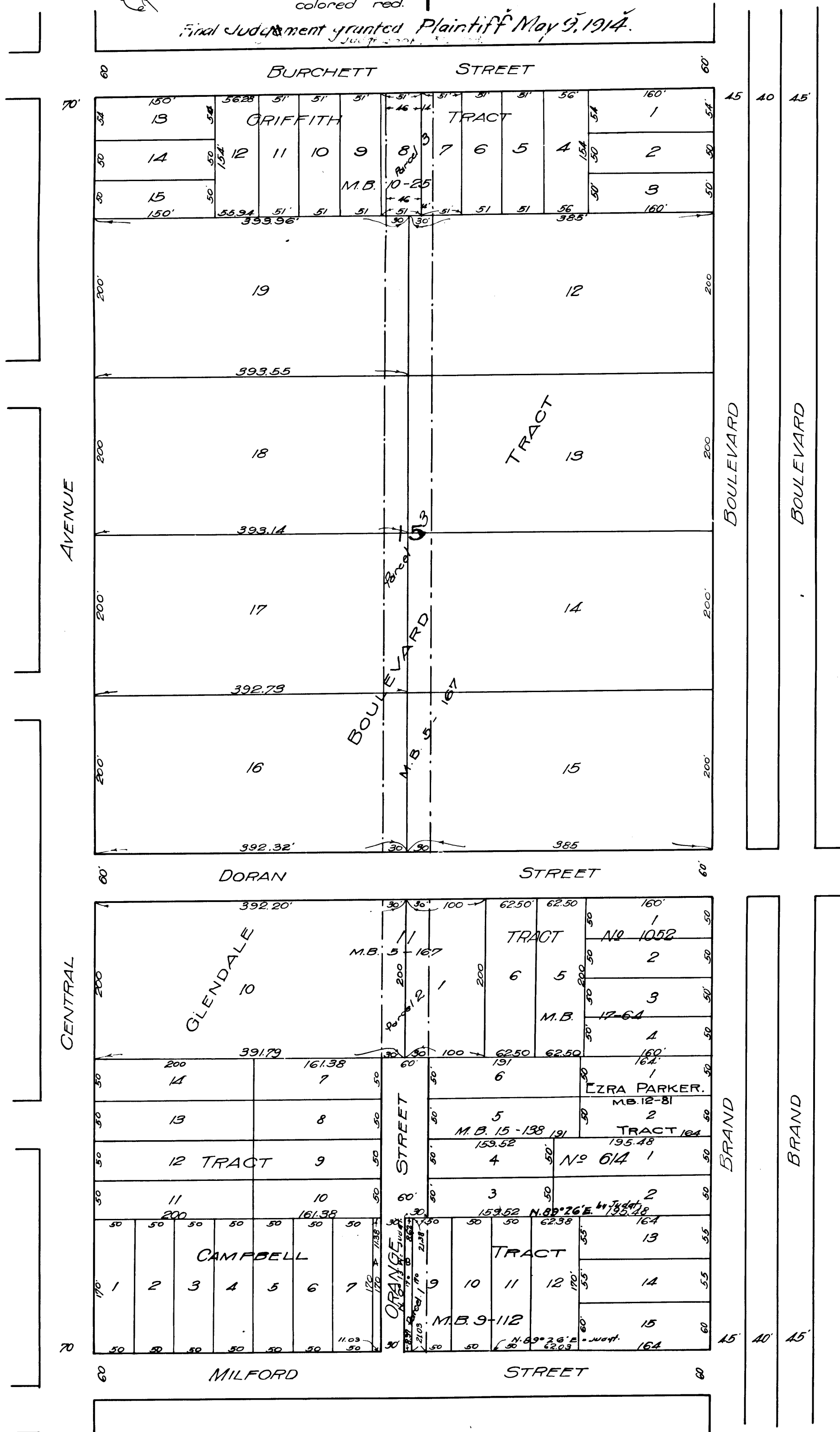
MAP
 SHOWING LAND SOUGHT TO BE CONDEMNED
 FOR THE OPENING AND WIDENING
 OF
ORANGE STREET
 FROM THE NORTH LINE OF MILFORD STREET TO THE
 SOUTH LINE OF BURCHETT STREET IN THE
 CITY OF GLENDALE
 IN ACCORDANCE WITH ORDINANCE No. 181.

Edward M. Lynch City Engineer.

Scale 1" = 100'

Note: Land sought to be condemned colored red.

Final Judgment granted Plaintiff May 9, 1914.



* 39501
 City of Glendale vs. Ezra F. Parker et al.
 No. Decision 9-7-13
 Condemnation.
 Final Judgt. for Plff. May 9, 1914.
 " Book 312-158.
 Note: Figures in Brackets from Judgt.

C.F. 724