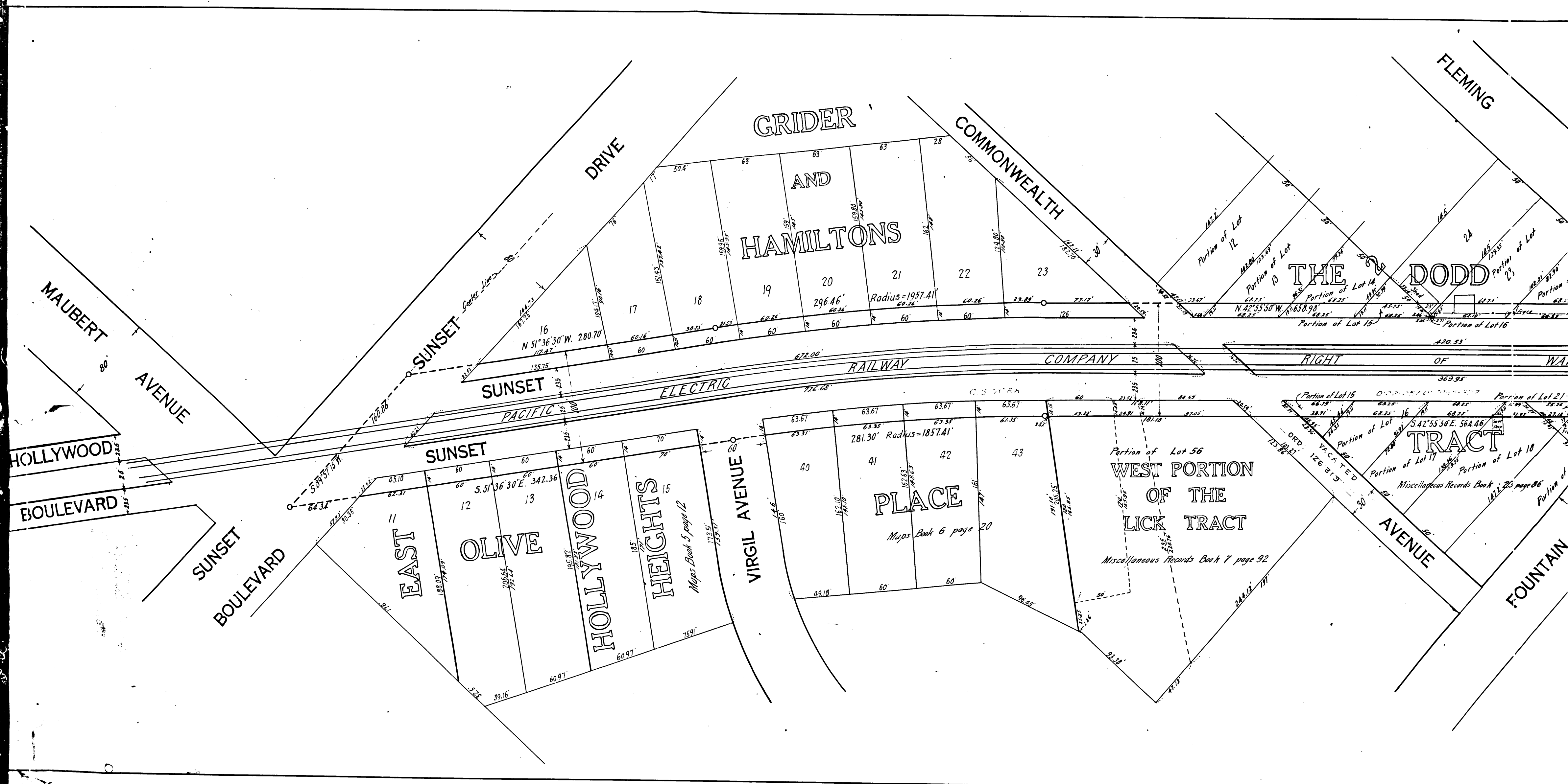
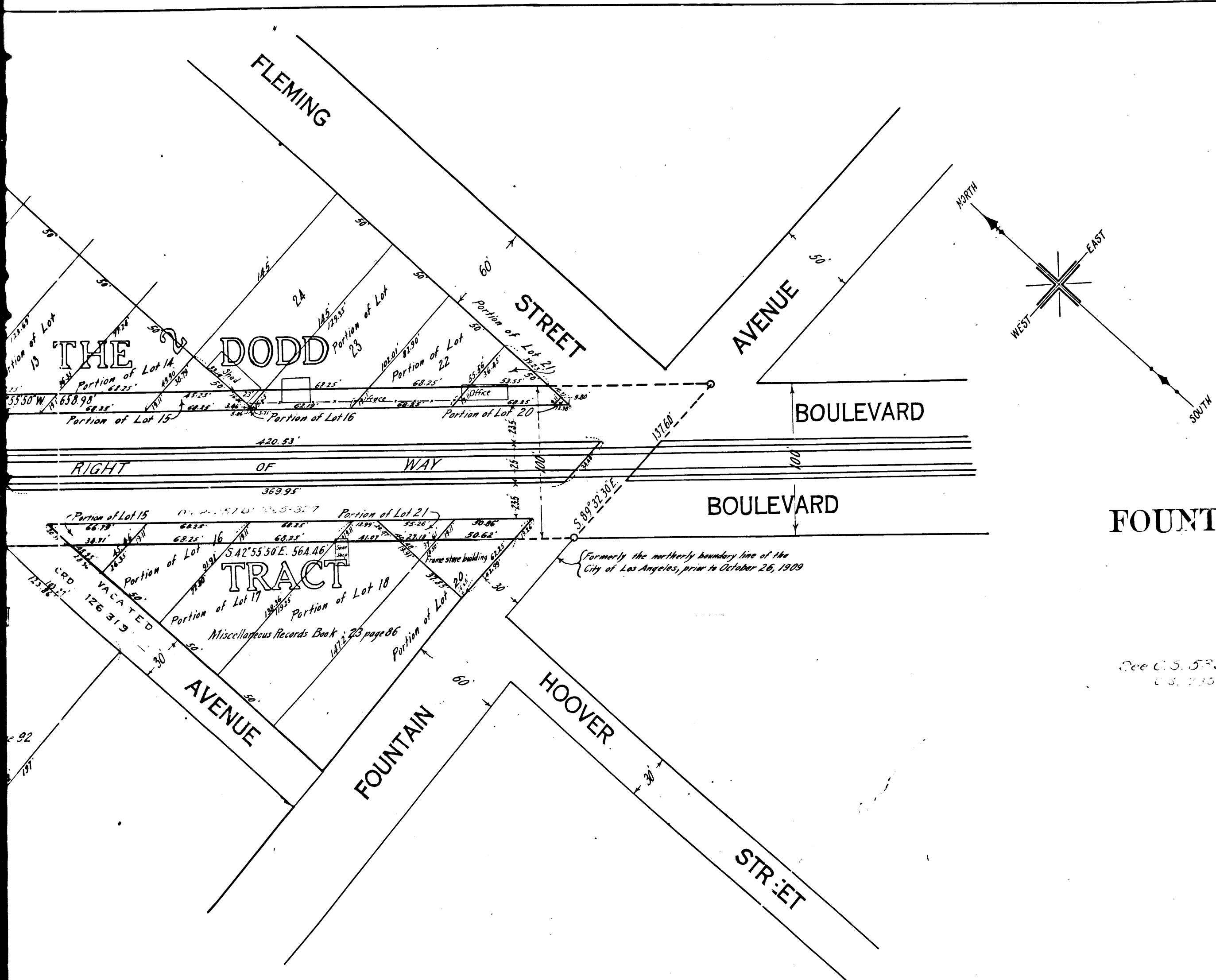


2  
4  
6  
8  
10  
12  
14  
16  
18  
20  
22  
24  
26  
28  
30  
32  
34  
36  
38  
40  
42  
44  
46  
48  
50  
52  
54  
56  
58  
60  
62  
64  
66  
68  
70  
72  
74  
76  
78  
80  
82  
84  
86  
88  
90



1  
C.F. 725 -



**EXHIBIT C**

**MAP**  
 SHOWING LAND TO BE CONDEMNED FOR  
 THE OPENING AND WIDENING  
 OF  
**SUNSET BOULEVARD**  
 BETWEEN  
**FOUNTAIN AVENUE AND HOLLYWOOD BOULEVARD**  
 IN THE  
**CITY OF LOS ANGELES, CAL.**

In accordance with Ordinances Nos 26088 and 26441 (New Series)  
 HOMER HAMLIN, City Engineer. January 1913  
 Scale 50 feet to 1 inch

#99526  
 City of Los Angeles  
 vs  
 Samuel S. Allen, et al.  
 Condemnation.  
 Pending  
 Inter Loc. Judt. Nov. 9-1914; Forfeitt.  
 Appealed - April 1915  
 Cal. Reports 24-120 - June 22, 1917  
 Final Judgment of the U.S. Circuit Court of Appeals for the 9th Circuit, Feb. 26, 1920.

NOTE: Land to be condemned shown colored red  
 Dotted lines and figures show where the actual holdings differ  
 from the recorded subdivisions

STATUS OF PROCEEDINGS

Proceedings begun 3-14-12 under Council order 25350	
Ordinance 26088	
Ordinance 26441	
City Engineer	C. E. Green
City Engineer	