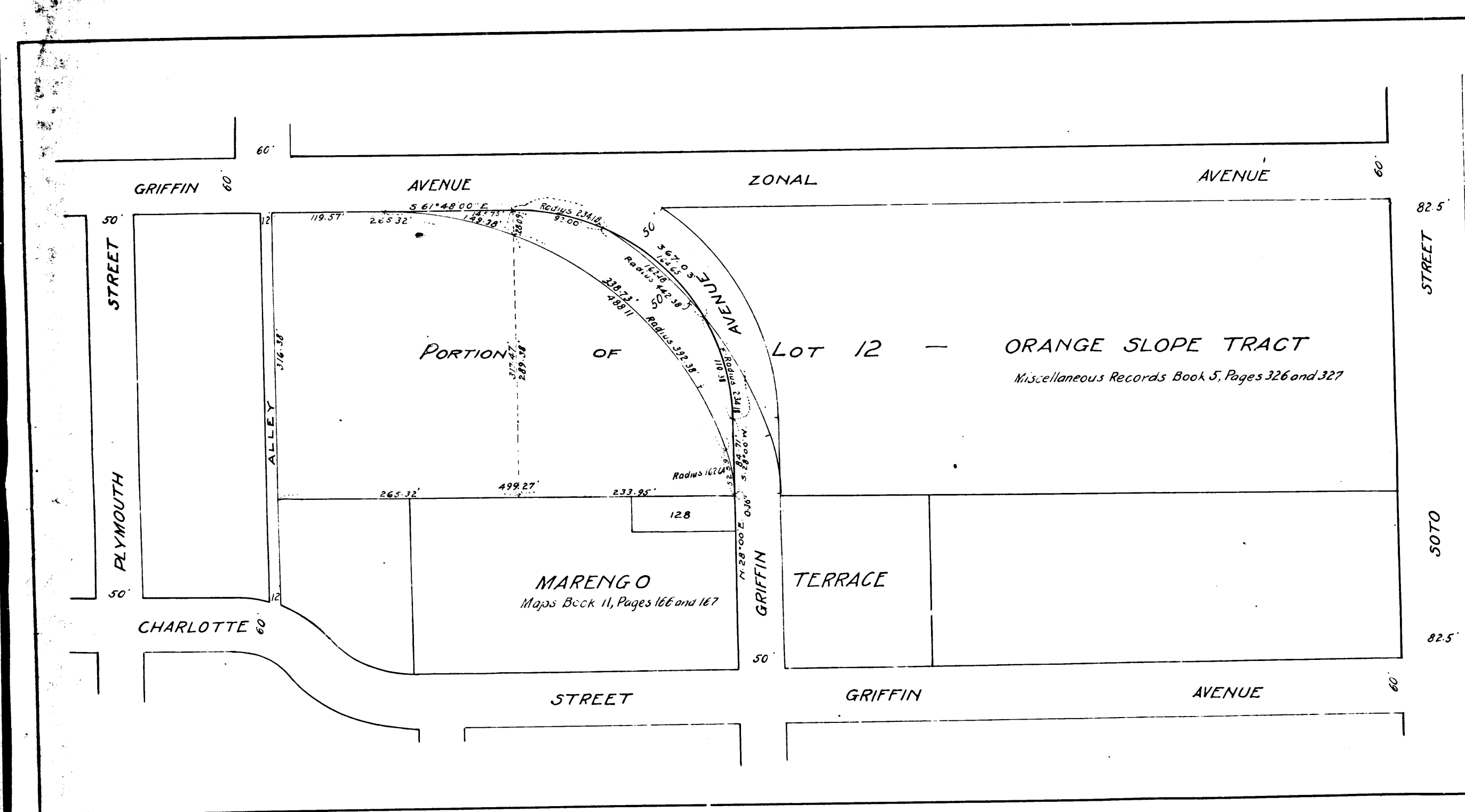


MEMCO
MUNICIPAL

MEMCO
MUNICIPAL



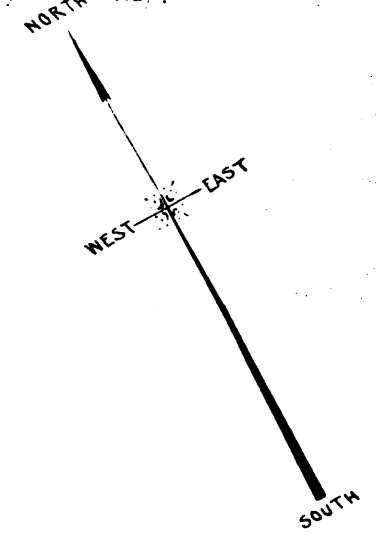
B 687
 City of Los Angeles
 vs
 Board of Education, et al.
 Pending
 7-18-13
 condemnation.
 Final Court for Plt.
 " Dec 12 1914.
 Judgt. Brock 333330.
 et al.

Sht. 7

MAP
 SHOWING LAND TO BE CONDEMNED
 FOR
 THE OPENING OF
GRIFFIN AVENUE
 BETWEEN
 ZONAL AVENUE AND CHARLOTTE STREET
 IN THE
 CITY OF LOS ANGELES, CAL.

In accordance with Ordinance Number 27108 (New Series)
 HOMER HAMLIN-CITY ENGINEER APRIL 1913
 Scale 100 feet to 1 inch

Note: Land to be condemned shown colored red.
 Dotted lines and figures show where the
 actual holdings differ from the recorded
 subdivisions.



C.F. 729 -

