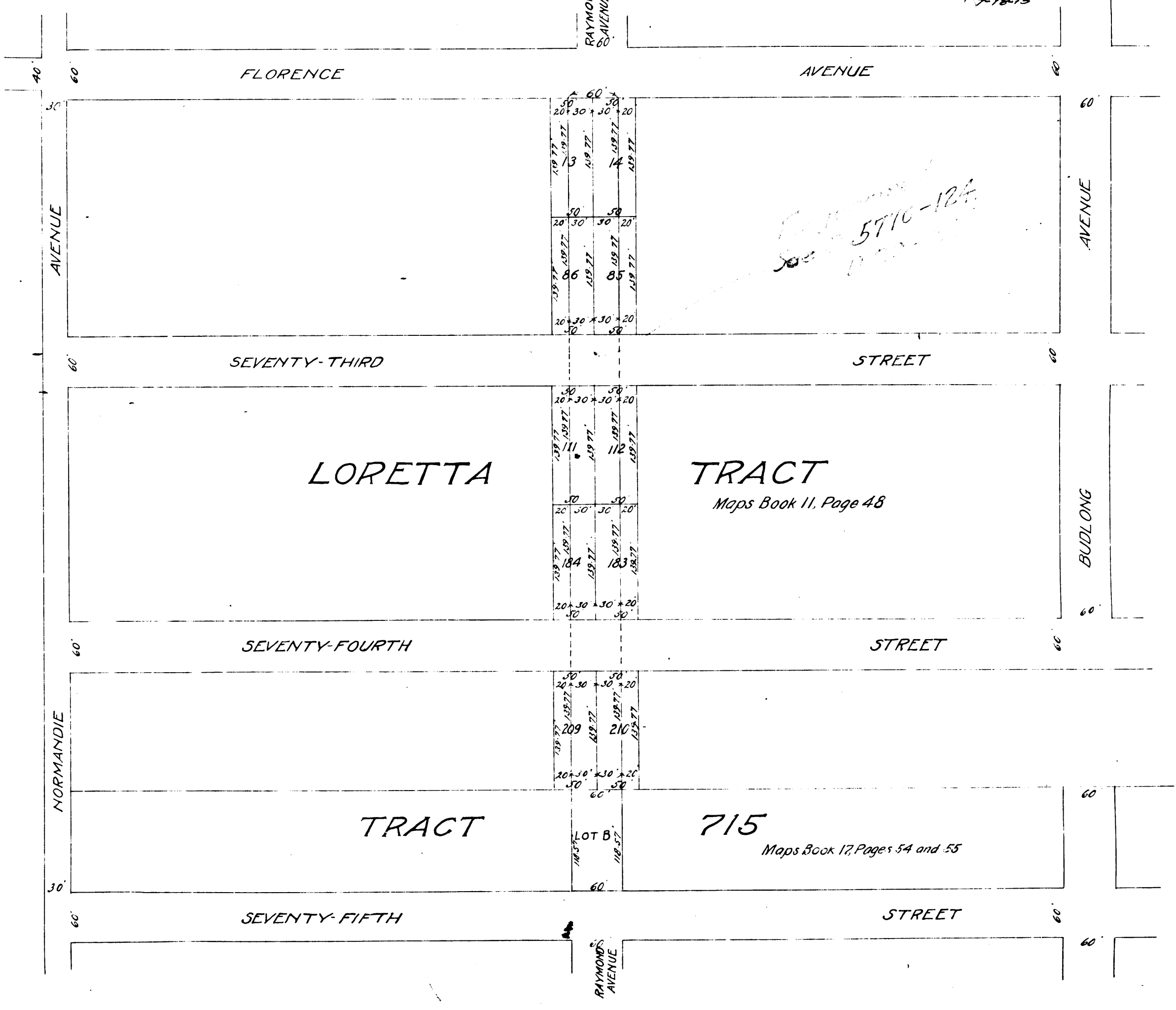


MAP  
 SHOWING LAND TO BE CONDEMNED  
 FOR  
 THE OPENING OF  
**RAYMOND AVENUE**  
 FROM  
 FLORENCE AVENUE TO SEVENTY-FIFTH STREET  
 IN THE  
 CITY OF LOS ANGELES, CAL.  
 In accordance with Ordinances Nos. 26721 and 27129 (New Series)  
 Homer Humlin - City Engineer April 1913  
 Scale 100 feet = 1 inch.

# B 840  
 City of Los Angeles  
 vs  
 Los Angeles Inv. Co. et al.  
 Pending  
 7-18-13

NOTE: Land to be condemned shown colored Red.  
 Final Judgment: Mar 2 1914  
 D: 20 91.



C.F. 730

