

**MAP**  
 SHOWING THE  
 LAND TO BE CONDEMNED  
 FOR THE  
 OPENING AND WIDENING  
 OF  
**LEXINGTON AVENUE**  
 FROM  
**WESTMORELAND AVE. TO VERMONT AVE.**  
 IN THE  
**CITY OF LOS ANGELES CAL.**

*In accordance with Ordinance Numbers 26871 and 27170 (New Series)*

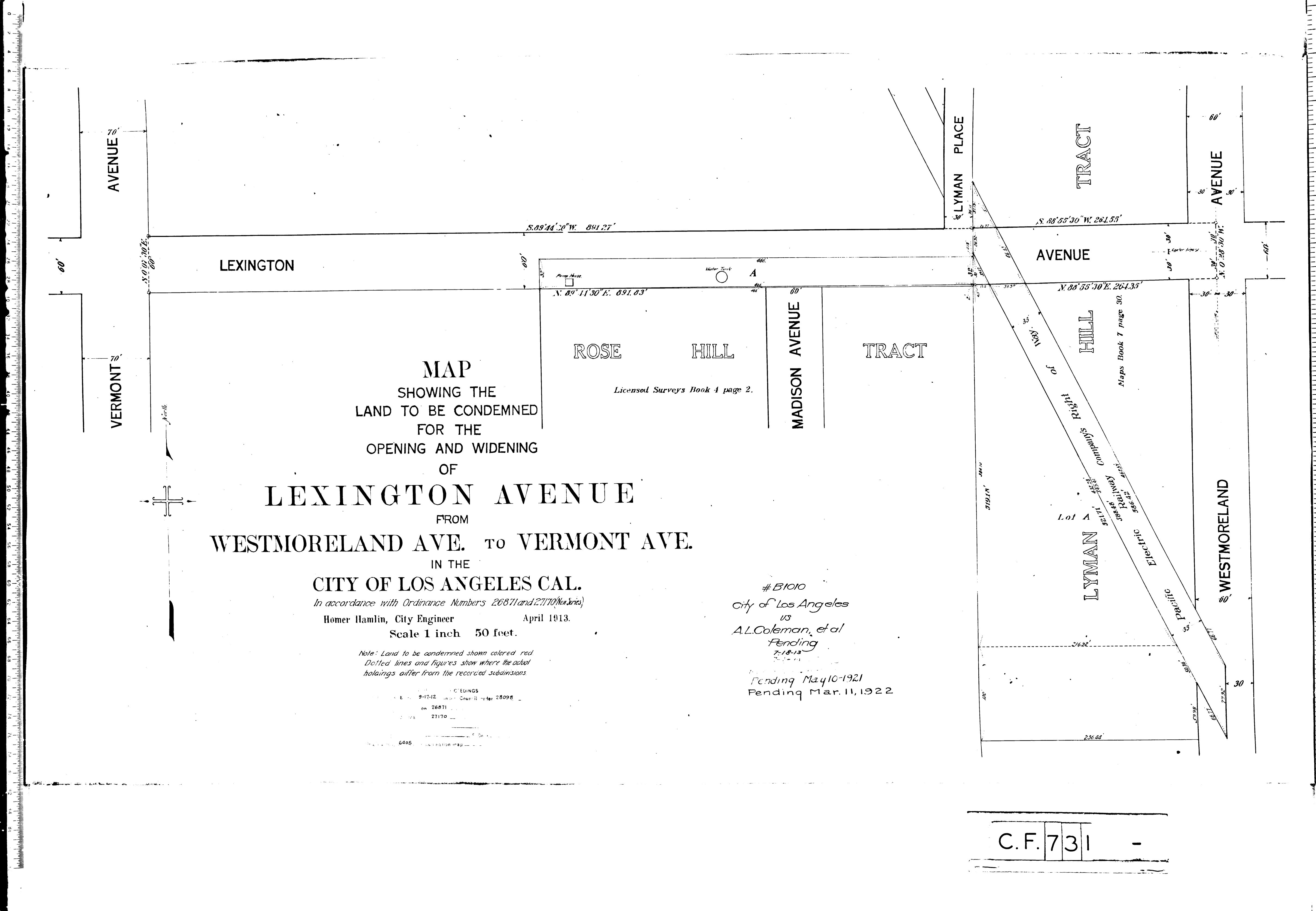
Homer Hamlin, City Engineer      April 1913.  
 Scale 1 inch = 50 feet.

*Note: Land to be condemned shown colored red  
 Dotted lines and figures show where the actual  
 holdings differ from the recorded subdivisions.*

RECORDS  
 9-17-12      Council Order 28098  
 on 26871  
 27170  
 6405      Inspection map

*Licensed Surveys Book 4 page 2.*

# 51010  
 City of Los Angeles  
 vs  
 A.L. Coleman, et al  
 Pending  
 7-18-13  
 Pending May 10-1921  
 Pending Mar. 11, 1922



C.F. 731 -