

MAP

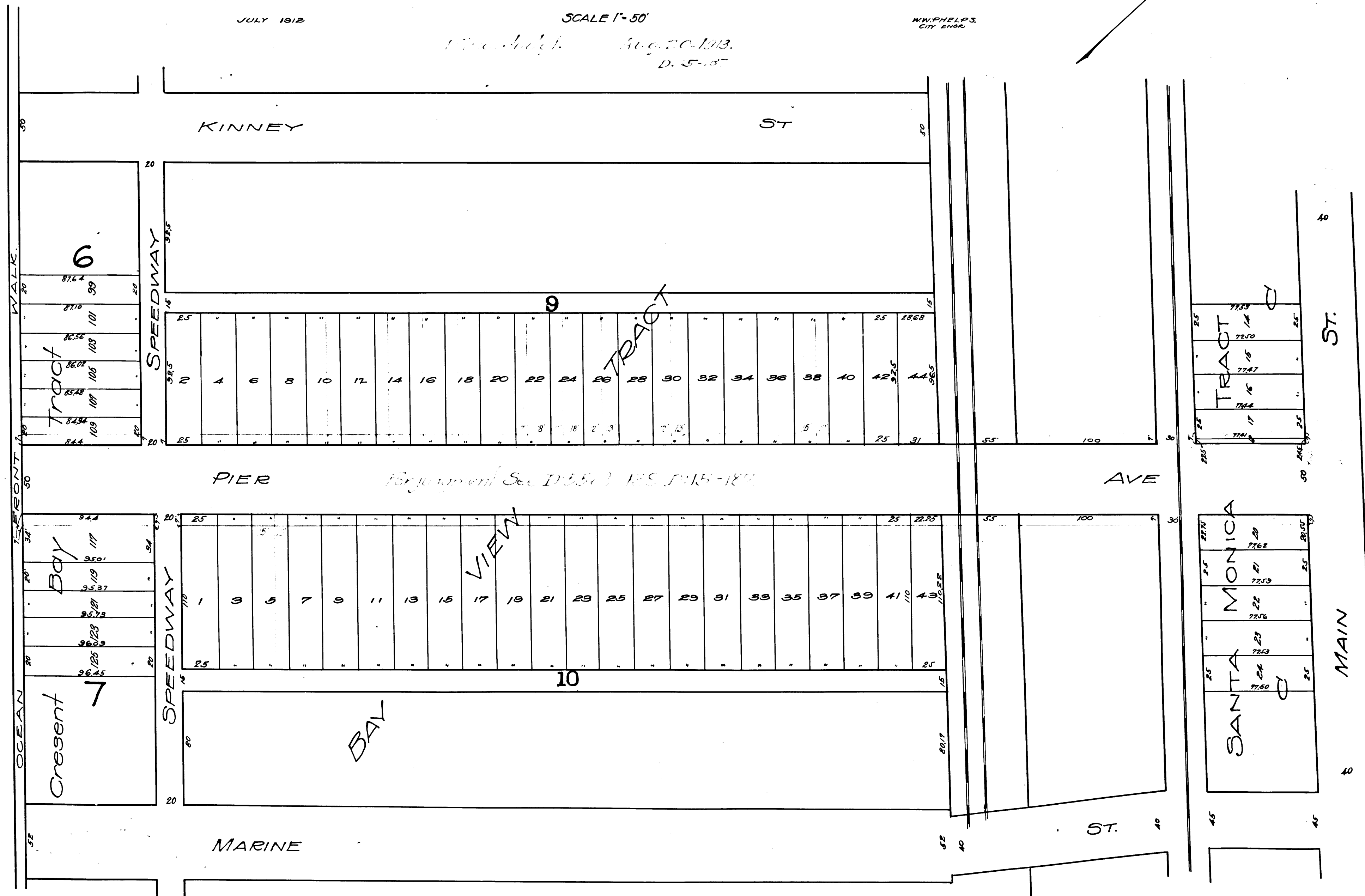
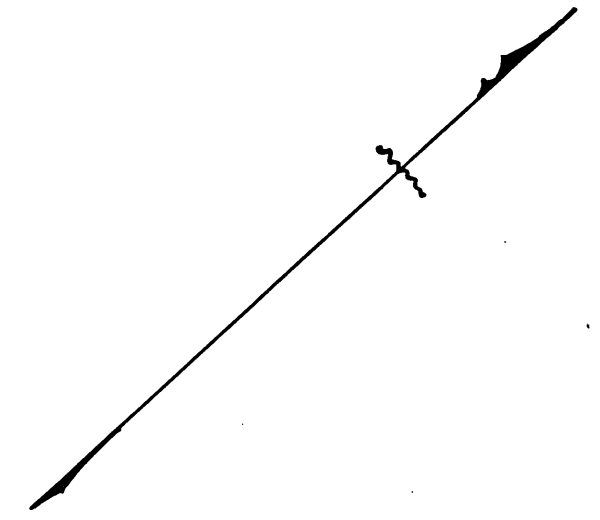
SHOWING PROPOSED LAND TO BE TAKEN  
FOR THE WIDENING OF  
PIER AVENUE  
BETWEEN OCEAN FRONT PROMENADE AND MAIN STREET.  
SANTA MONICA, CAL

JULY 1912

SCALE 1"=50'

M.W. PHELPS,  
CITY ENGINEER

*Proposed Aug. 20-1913.  
D. 15-187*



WEMCO  
PASADENA, CAL

WEMCO  
PASADENA, CAL

10TH  
957

10TH  
957

C.F. 732 -