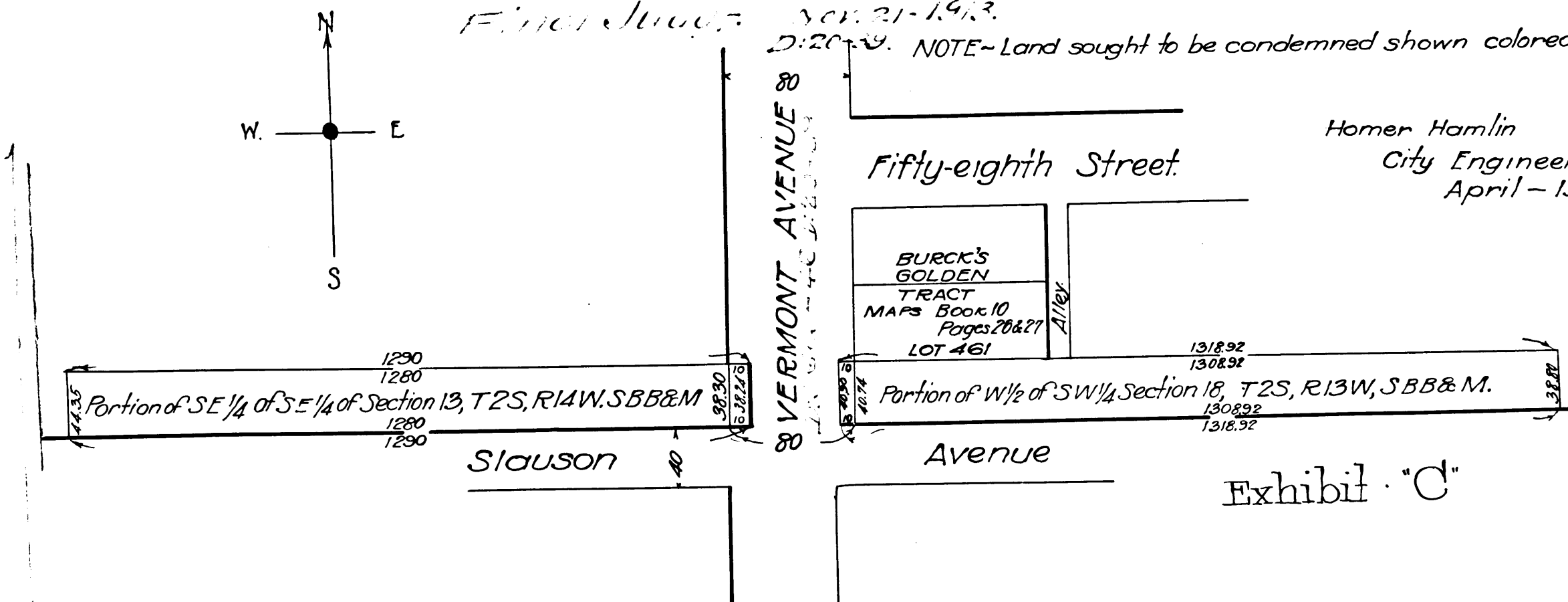


MAP  
 Showing Land Sought to be Condemned  
 For the Opening of  
**VERMONT AVENUE**  
 between  
**FIFTY-EIGHTH STREET AND SLAUSON AVENUE**  
 in the  
**CITY OF LOS ANGELES**  
 In accordance with Ordinances Nos 21578 and 21941 (New Series)  
 Scale-100 feet per inch.

Final Judgt. Nov. 21-1913.

NOTE - Land sought to be condemned shown colored red.

Homer Hamlin  
 City Engineer  
 April - 1911.



S.C.C. 83147  
 City of L.A. vs. Atch. Top. & Sa. Fe Ry. Co.  
 Final Judgement for Plaintiff  
 Nov. 22, 1913.

Index 24

C.F. 733 -

VEMCO  
PASADENA, CAL.

VEMCO  
PASADENA, CAL.

10TH  
9 6

10TH  
9 5