

VEMCO
PASADENA, CAL.

9 S 7

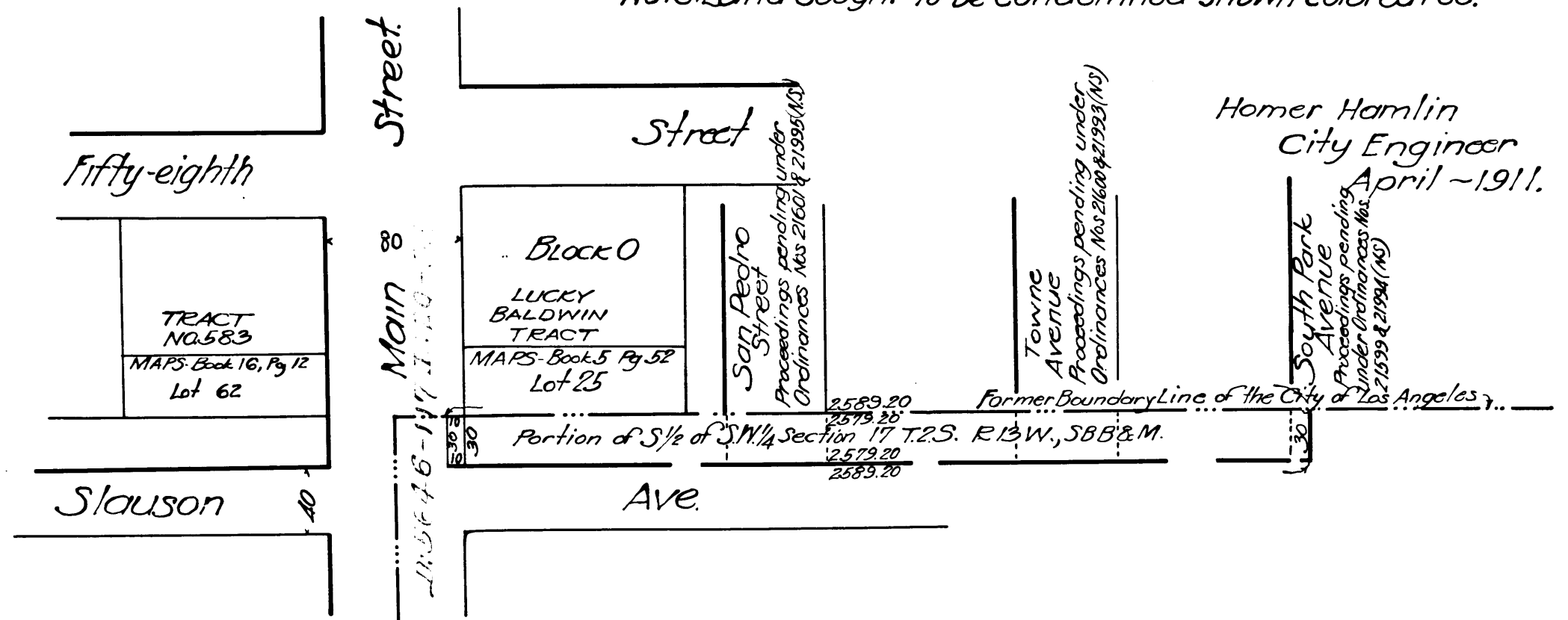
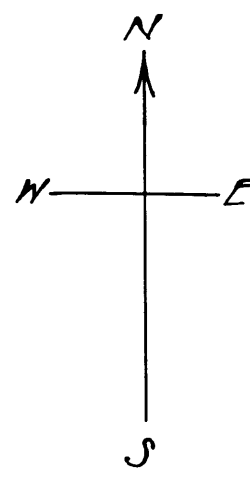
VEMCO
PASADENA, CAL.

9 S 7

Sheet 7
 MAP
 Showing Land Sought to be Condemned
 For the Opening of
 ~ MAIN STREET ~
 between
 FIFTY-EIGHTH STREET AND SLAUSON AVENUE
 in the
 CITY OF LOS ANGELES
 In accordance with Ordinances Nos 21576 and 21943 (New Series)
 Scale - 100 feet per inch.

Exhibit "C"

Note: Land sought to be condemned shown colored red.



S.C.C. # 83148
 City of L.A. vs. Atch. Top & Sa. Fe Ry. Co.
 Final Judgement for Plaintiff
 Nov. 22, 1913.
 D:20:38

C.F. 734 -