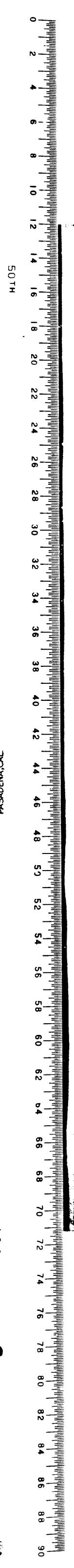


VEMCO PASADENA, CALIF.

9 5 7

10TH

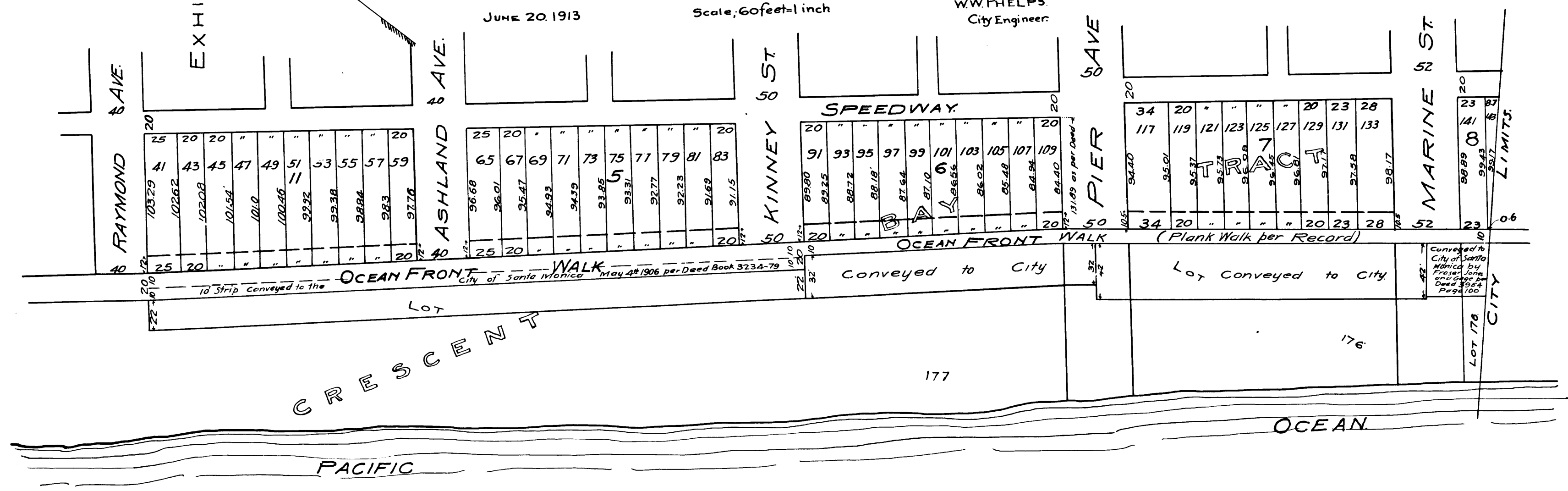


SKETCH MAP SHOWING GENERAL ROUTE AND TERMINI OF PROPOSED WIDENING OF OCEAN FRONT WALK.

As contemplated by Special Ordinance No 365 of the City of Santa Monica.

Dismissed Dec 27 1915

JUNE 20 1913 Scale: 60 feet = 1 inch W.W. PHELPS City Engineer



VEMCO PASADENA, CALIF.

9 5 7

10TH



C.F. 738 -