

MAP
 SHOWING THE LAND TO BE CONDEMNED FOR THE OPENING OF
SEVENTY-FIFTH STREET

BETWEEN
FIGUEROA STREET AND MONETA AVENUE

IN THE
 CITY OF LOS ANGELES, CAL.

In accordance with Ordinances Nos. 27313 and 27891 (New Series)

Scale 1 inch = 100 feet

Homer Hamlin, City Engineer August 1913

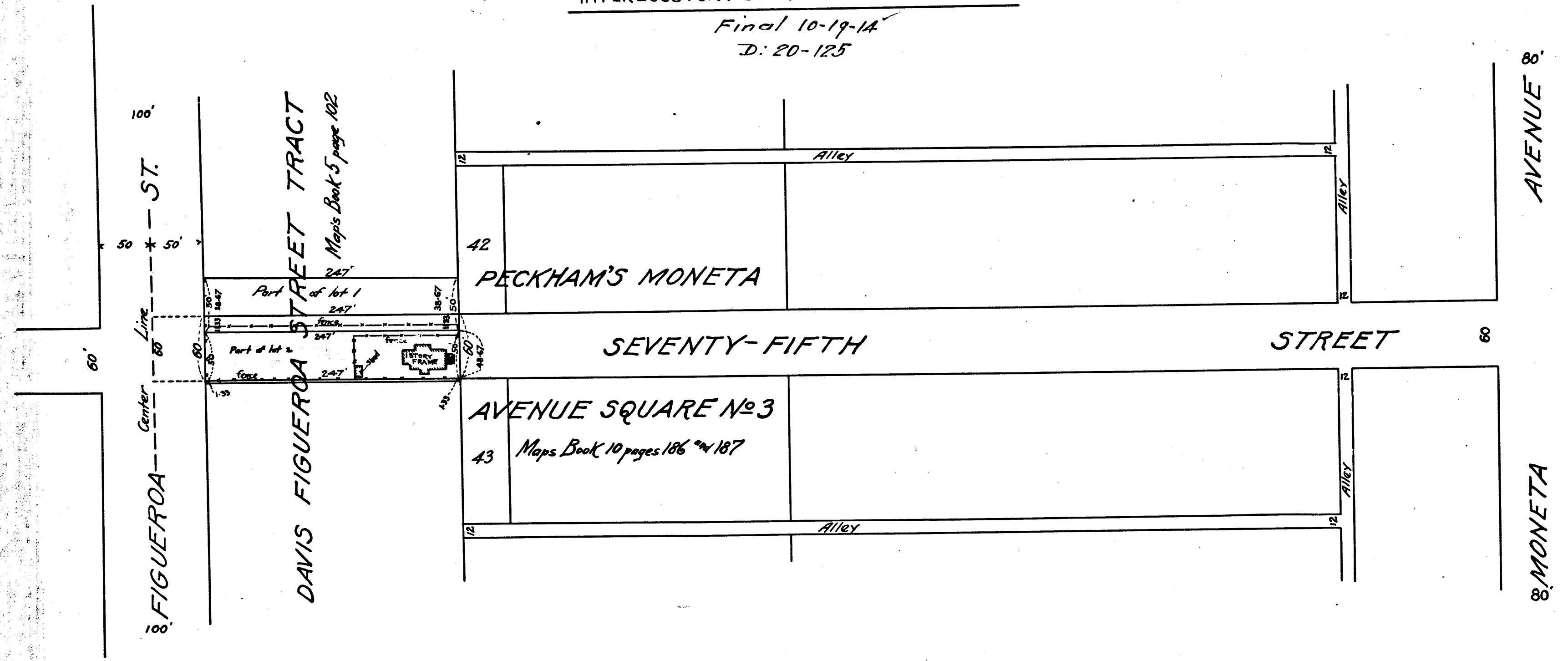
Sht. 7

Note:- Land to be condemned colored red

Exhibit "C"

SUPR. CT. CASE No B.4346
 CITY OF L.A., PLTFVS. B.A. MYERS, DEFT. ETAL.
 INTERLOCUTORY DECREE. MARCH 30TH 1914

Final 10-19-14
 D: 20-125



C.F. 742

50TH

VEMCO
PASADENA, CAL

757

10TH

50TH

VEMCO
PASADENA, CAL

757

10TH