

10TH

957

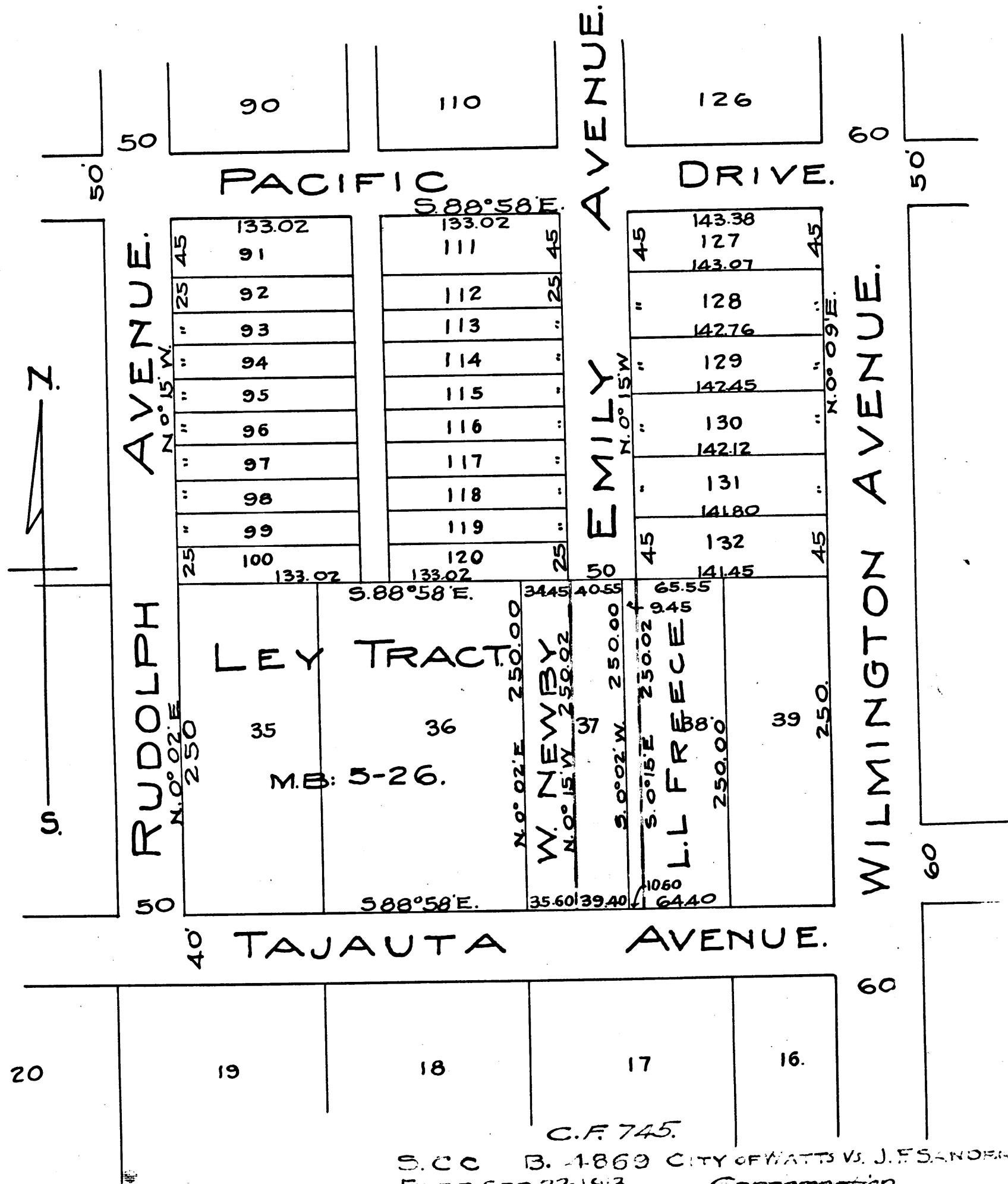
VEMCO
PASADENA, CAL.

H105

MAP
 SHOWING EXTENSION OF EMILY AVENUE THROUGH
 LOTS 37-38 LEY TRACT.
 CITY OF WATTS.
 LOS ANGELES COUNTY, CALIFORNIA.

SCALE: 1 IN. = 100 FT.

MAY 11-1913.



C.F. 745
 -

C.F. 745.
 S. CC B. 1869 CITY OF WATTS VS. J. F. SANDERS.
 FILED SEP 22-1913. *Condemnation.*
~~Pending, July 1, 1916.~~
~~Dismissed, June 10-1917.~~

10TH

957

VEMCO
PASADENA, CAL.

H105