

S.C.C. B 7148 = CITY OF SOUTH PASADENA VS. A.R. MOHR.
 Int. JUDGMENT = BOOK 310 P. 272 = MAR 16-1914, Book 272 = PHF.
 DISMISSED Oct. 5-1914.

(condemnation)

**MAP SHOWING
 LAND TO BE TAKEN AND ASSESSMENT DISTRICT.
 AS DESCRIBED IN ORDINANCE NO. 383.**

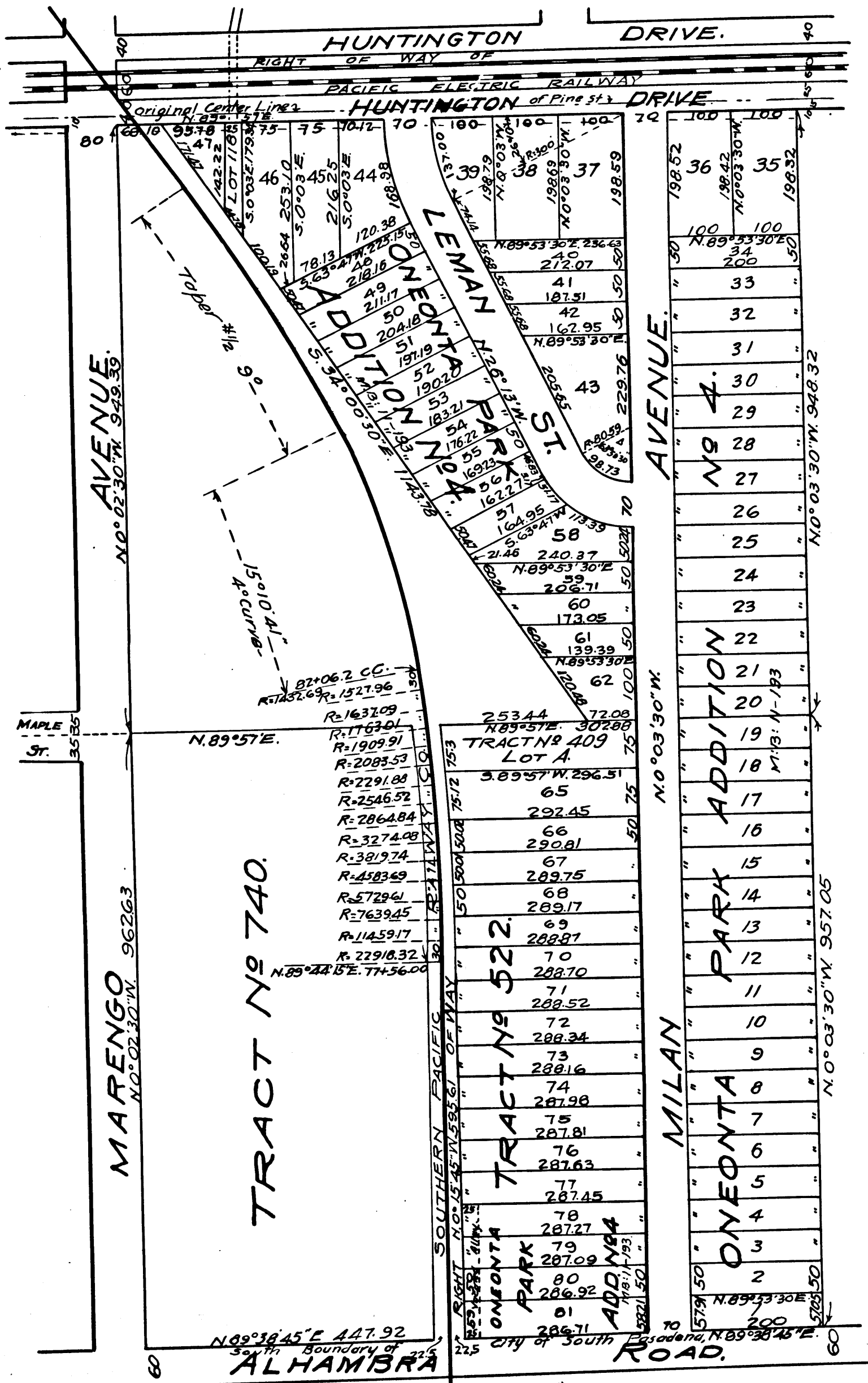
CITY OF SOUTH PASADENA

SCALE: 1" = 200'

John Mac Millan,
City Engineer.

LEGEND:-

- Denotes Land to be taken for Park.
- " Boundaries of Assessment District.



C.F. 749

EXHIBIT C