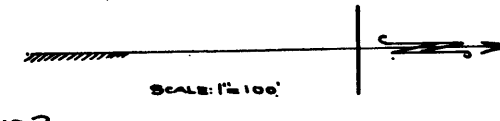


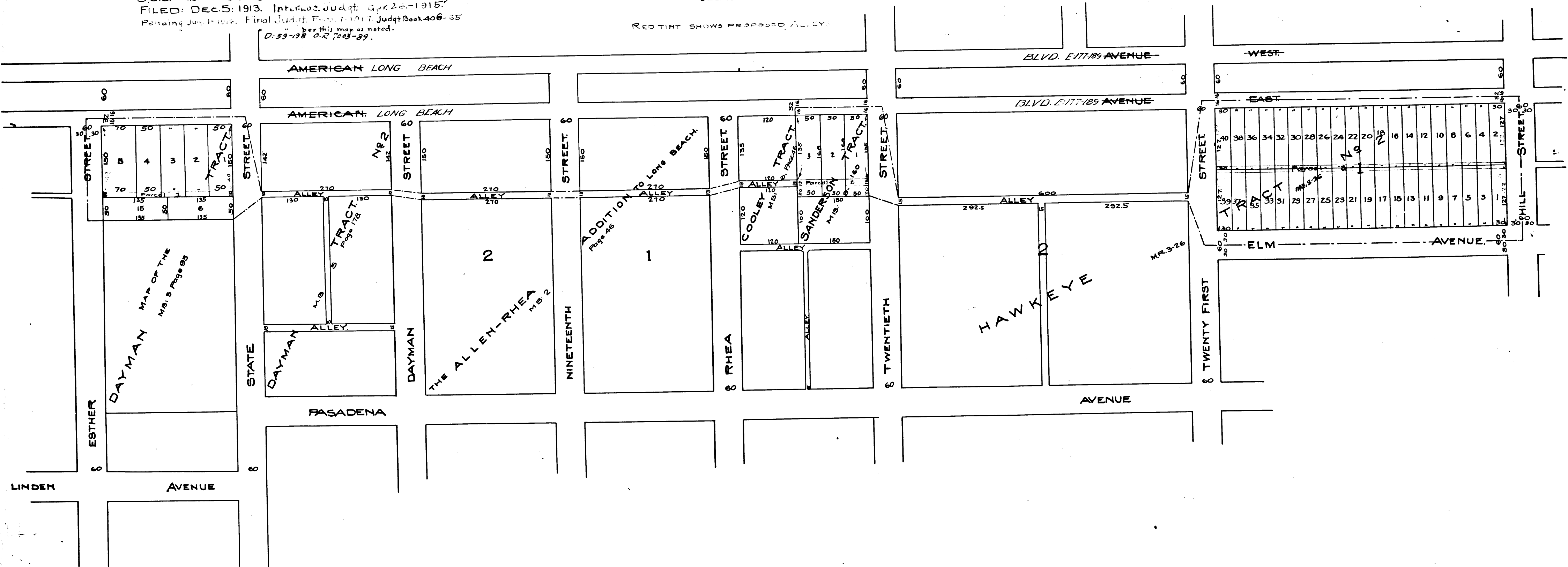
EXHIBIT "C"

SCC. B. 7196. CITY OF LONG BEACH vs. QUINN.
FILED: DEC. 5: 1913. Interloc. Judgt. Apr. 24-1915.
Pending Jdg. H. 106. Final Judgt. Feb. 1917. Judgt. Book 406-35
D: 59-198 O.R. 7003-89.
See this map as noted.

MAP
SHOWING PROPOSED
ALLEY
THROUGH
DAYMAN TRACT, SANDERSON TRACT AND BLOCK 1 HAWKEYE TRACT N^o 2.
IN THE
CITY OF LONG BEACH, CALIF.
E. F. DEWEY, CITY ENGINEER.
DEC. 1912.



RED TINT SHOWS PROPOSED ALLEY



C.F. 750 -

100'
95'
90'
85'
80'
75'
70'
65'
60'
55'
50'
45'
40'
35'
30'
25'
20'
15'
10'
5'
0'
VENCO
PACIFIC
ENGINEERS