

### DIAGRAM OF ASSESSMENT DISTRICT

For the opening of EUCALYPTUS AVENUE From Redondo Avenue to Arbor Vitae Street.

INGLEWOOD, CALIFORNIA.

Scale: 1"=100'

P. E. KRESSLEY, CITY ENGINEER.

May, 1913.

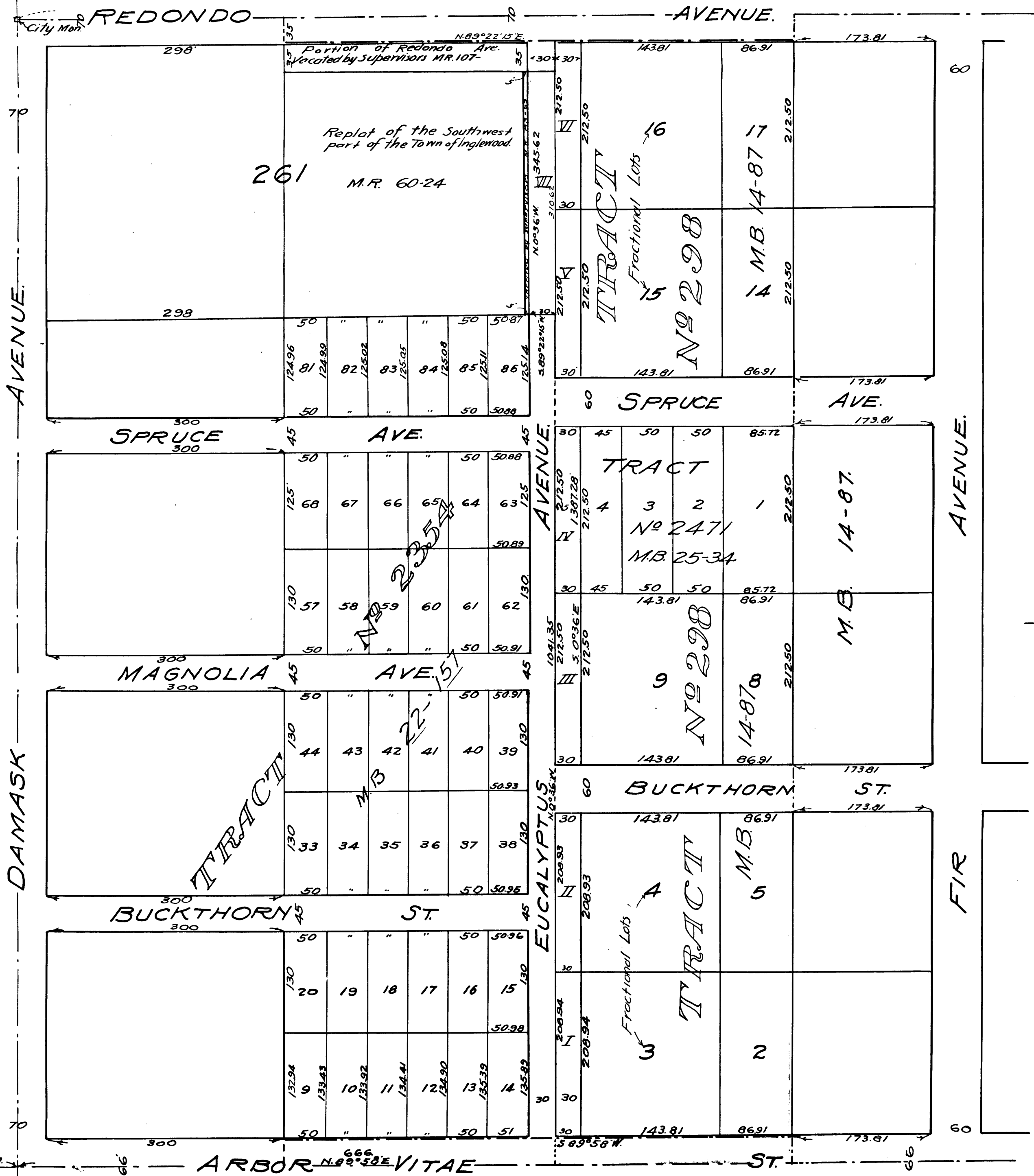
Note: Green Colored border Lines indicate Assessment District.

Red Colored border Lines indicate portion of Eucalyptus Avenue to be opened, and Land to be taken.

S.C.C. B10918 CITY OF INGLEWOOD VS. HELMERICHS. Filed Apr. 3, 1914, Condemnation. Final Judgt for Plff. June 2, 1915.

Judgt. Book 349-40, City of Inglewood, Cal. EXHIBIT C.

80



C.F. 764