

10TH

957

VEMCO
PASADENA, CAL.

1106



50TH

VEMCO
PASADENA, CAL.

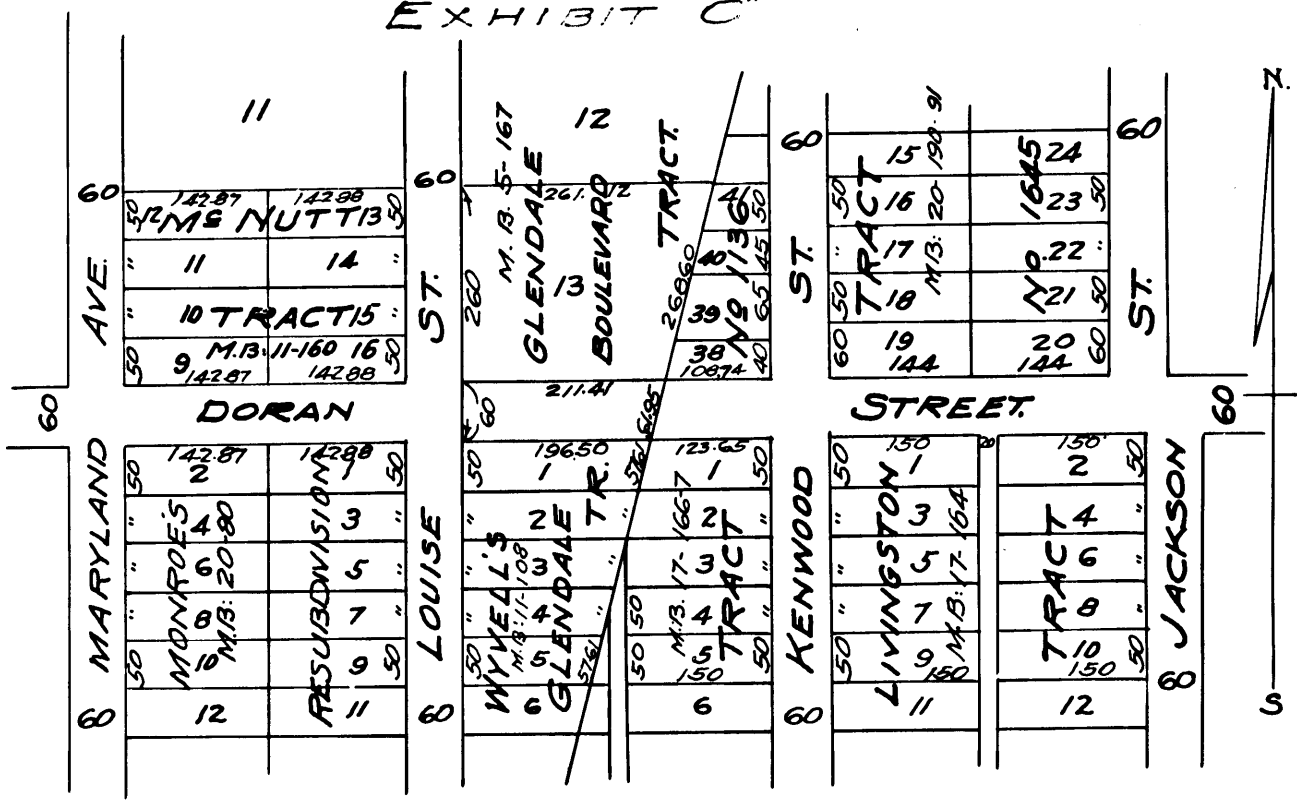
957

10TH

MAP
 SHOWING LAND TO BE CONDEMNED FOR THE
 OPENING OF
DORAN STREET
 FROM THE EAST LINE OF LOUISE STREET TO
 THE WESTERLY LINE OF TRACT No. 1136
 AS PER MAP RECORDED IN BOOK 17 PAGES 166-167
 OF MAPS, RECORDS OF LOS ANGELES Co. CAL.
 IN ACCORDANCE WITH ORDINANCES
 No. 220 AND 224 OF THE CITY
 OF GLENDALE
 EDWARD M. LYNCH, CITY ENGINEER.
 Scale: 1"=200'

Note:- Land sought to be condemned colored red.

EXHIBIT C



S.C.C. B 11067- CITY OF GLENDALE VS. E.P. THOM, ETAL.
 Filed Apr. 8-1914. Condemnation. Final Judgt. for Plaintiff.
 Final Judgment Oct. 17-1914. Judgt. Book, 326-161.
 As per this map.

C.F. 765
 -

