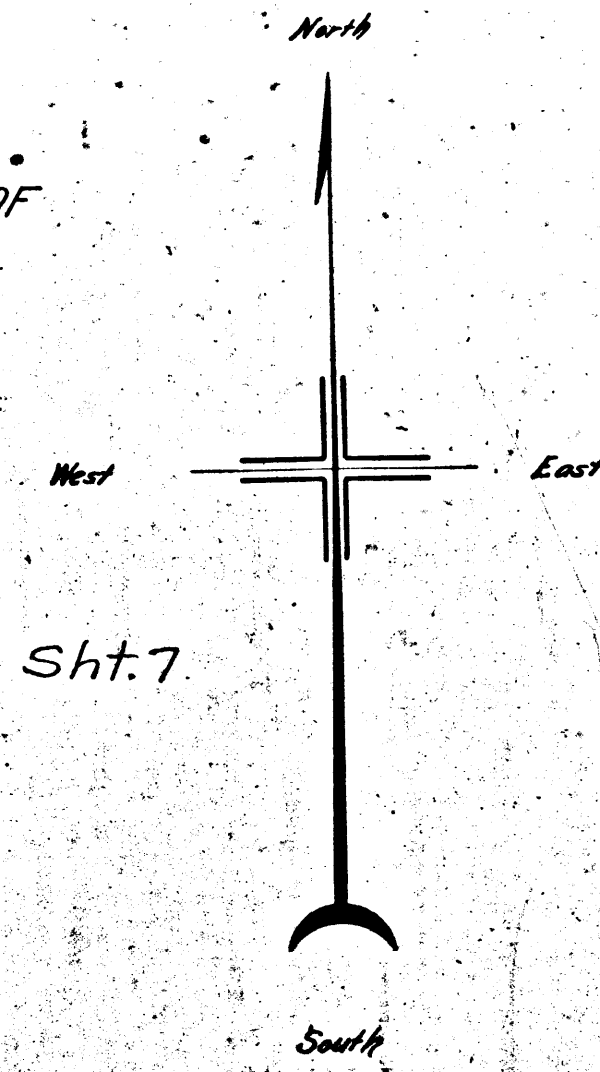


MAP
SHOWING THE LAND TO BE CONDEMNED FOR THE OPENING OF
SEVENTY-SIXTH STREET
BETWEEN
FIGUEROA STREET AND MONETA AVENUE

IN THE
CITY OF LOS ANGELES, CAL.
In accordance with Ordinances Nos. 2731A ~ 27892 (New Series)
Scale 1 inch = 100 feet
Homer Hamlin, City Engineer August 1913

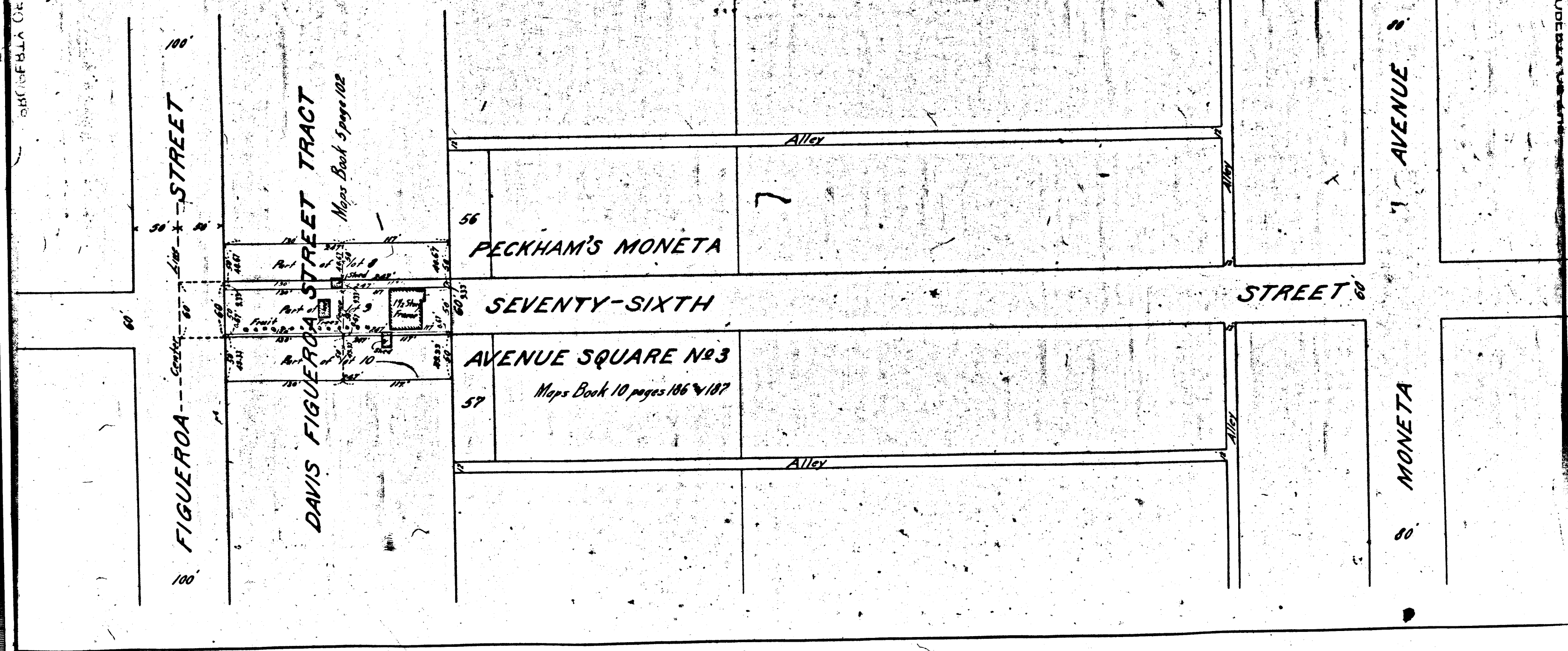


Sht. 7

Note:- Land to be condemned colored red.
Dotted lines and figures show where the actual holdings
differ from the recorded subdivisions.

Final Judgment April 12, 1915 D. 6022-195 D. 22-92
For plaintiff.

SECTION 10 OF THE



SECTION 10 OF THE