

Exhibit C

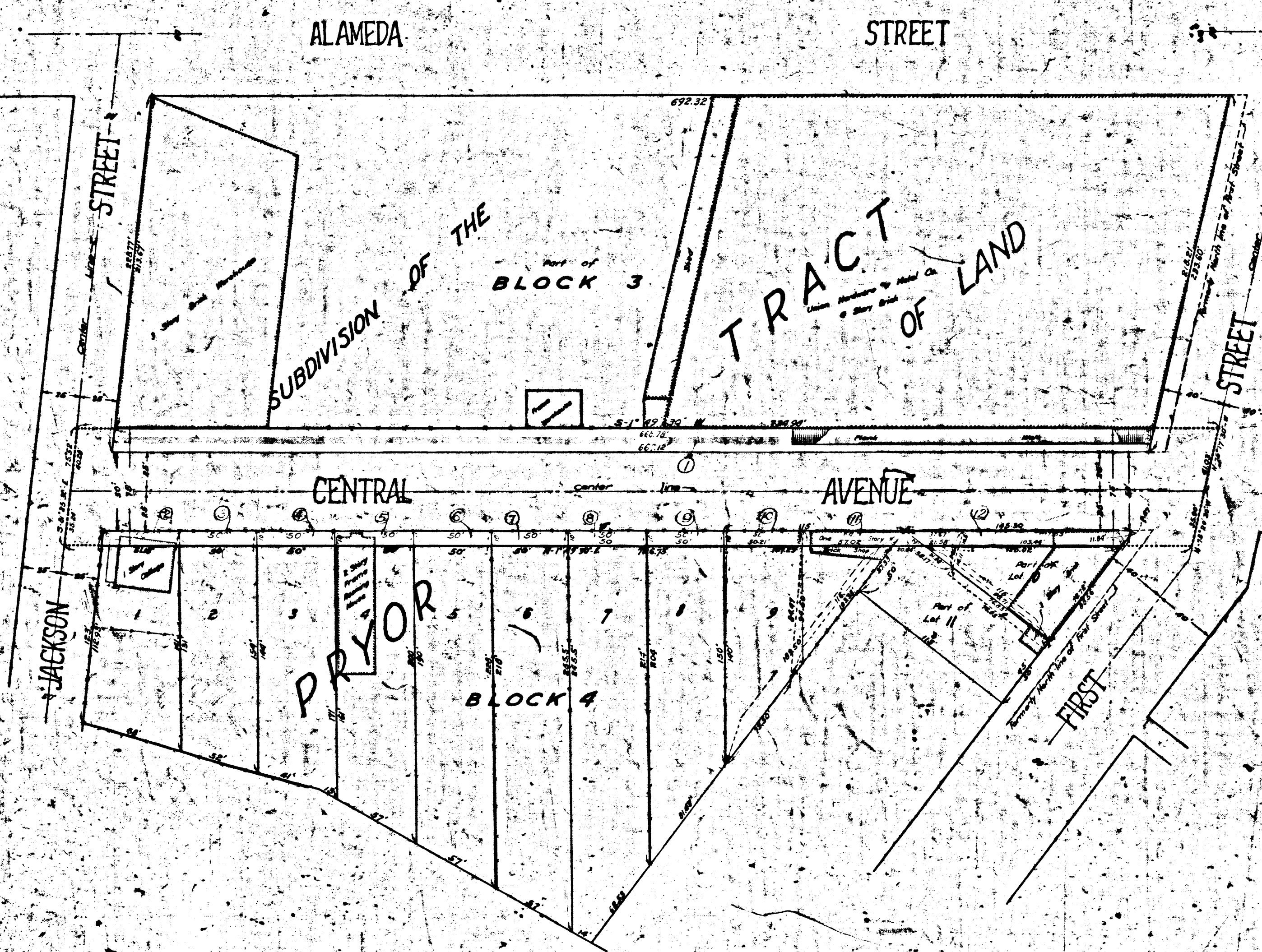
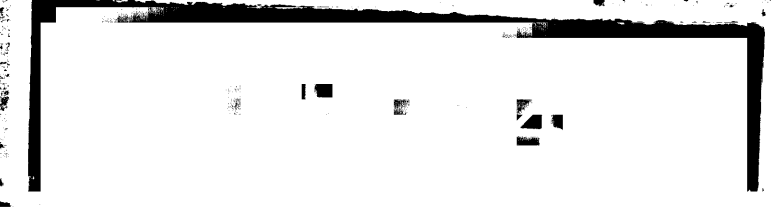
City of Los Angeles - Plaintiff
vs
Union Hardware and Metal Company - Defendant
Interlocutory Judgment - Jan. 25, 1915
Final Judgment July 12, 1915

MAP
SHOWING LAND TO BE CONDEMNED
FOR THE WIDENING OF
CENTRAL AVENUE
BETWEEN
JACKSON STREET TO FIRST STREET
IN THE
CITY OF LOS ANGELES, CAL.

In accordance with Ordinances numbers {24913
25305} (New Series)
Scale - One inch = Fifty feet
HOMER HAMLIN
City Engineer
MARCH, 1914.

NOTE:
Land to be condemned shown colored red.
Dotted lines and figures show where the actual
holdings differ from the recorded subdivisions.
Records shown as follows:

STATE OF PROCEEDINGS
Proceedings by the City of Los Angeles, Plaintiff,
vs
Union Hardware and Metal Company, Defendant,
for the purpose of the widening of
Central Avenue between Jackson Street and
First Street, in the City of Los Angeles,
California.
Filed for Record July 12, 1915.
C. L. Owsen, 24-5



ALAMEDA STREET

JACKSON STREET

SUBDIVISION OF THE
BLOCK 3

TRACT OF LAND

FIRST STREET

CENTRAL AVENUE

JACKSON STREET

PRYOR

BLOCK 4

FIRST STREET