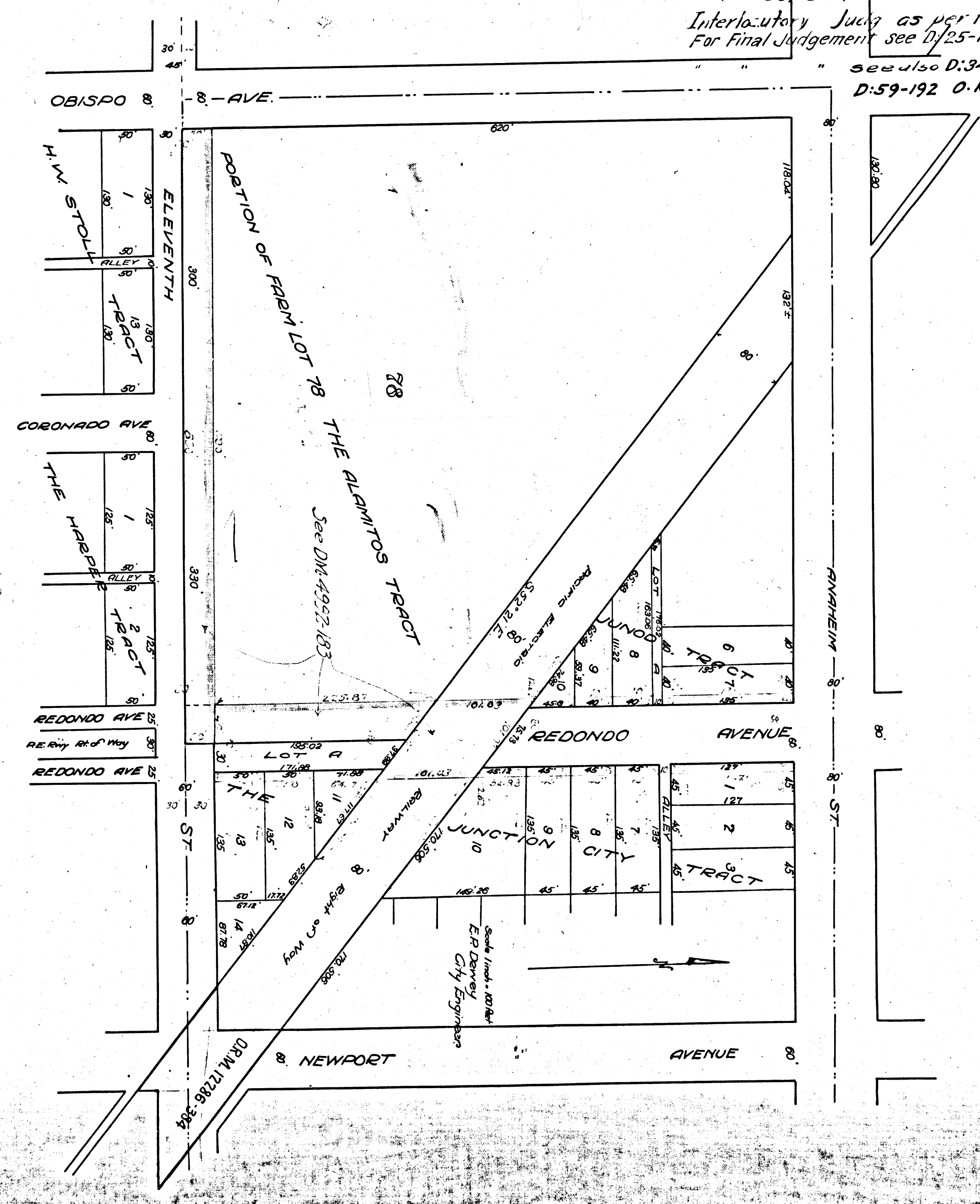


Exhibit "C"

MAP
 Showing land to be taken for the proposed
 OPENING & WIDENING
 of
 ELEVENTH STREET
 from
 Obispo Avenue to Redondo Avenue
 and
 REDONDO AVENUE
 from
 Eleventh Street to Anaheim Street
 Oct. 1911

30399
 City of Long Beach - City
 vs
 WED M. Shinnick, et al
 Interlocutory Decree - Sept. 17, 1912
 Satisfaction of Judgment by all Defd's
 who had not previously given deeds, was
 filed Feb. 8-17
 Interlocutory Judgment as per this map.
 For Final Judgment see D/25-195,

see also D:34-2650R, R43-55
 D:59-192 O.R. 7020-71



C.F. 778

A-1325