



10TH 957

VEMCO PASADENA, CAL.

Map No. 113

Clerk's Filed Map No. 113

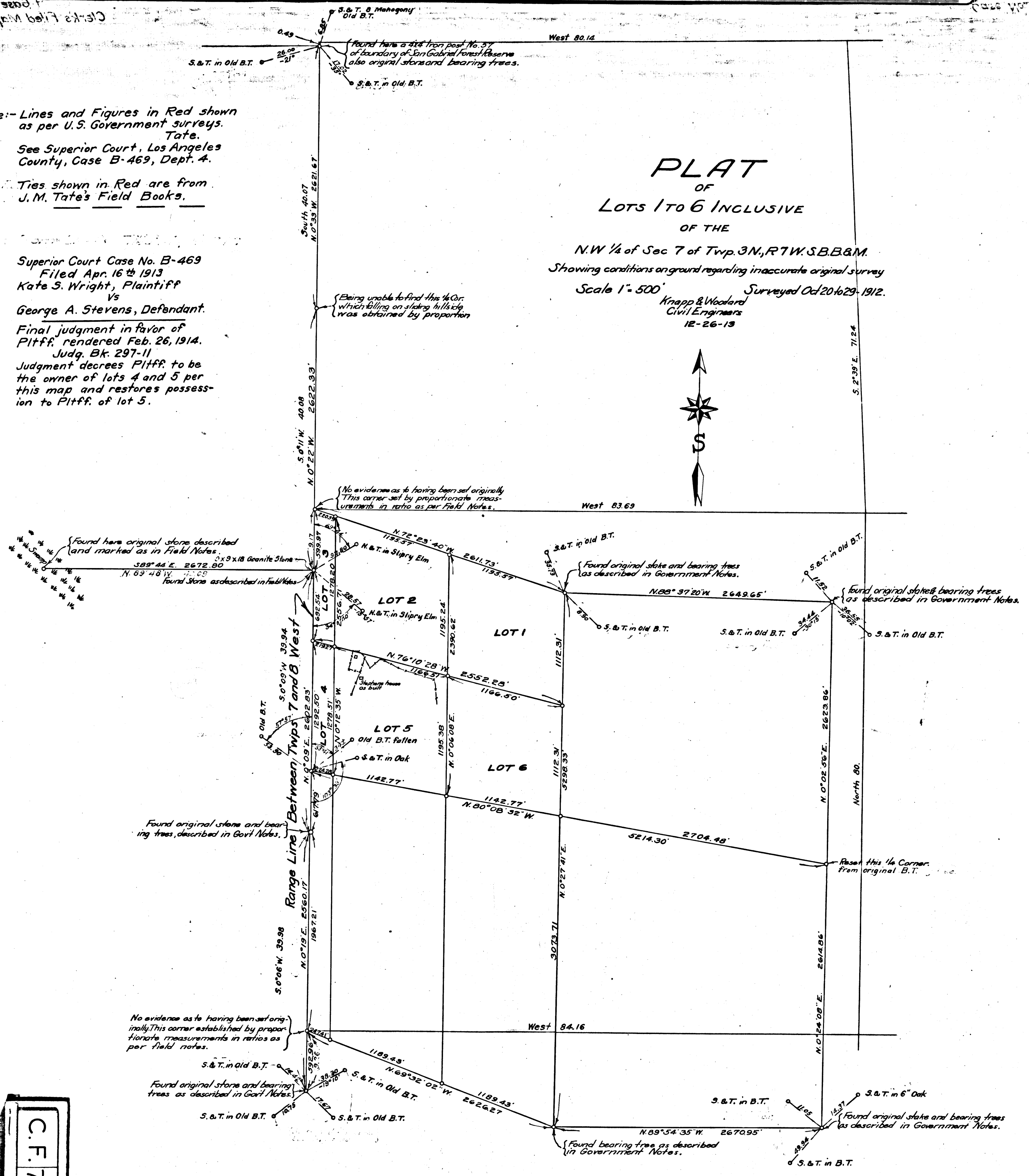
Note:- Lines and Figures in Red shown as per U.S. Government surveys. Tate.
 See Superior Court, Los Angeles County, Case B-469, Dept. A.
 Ties shown in Red are from J.M. Tate's Field Books.

Superior Court Case No. B-469
 Filed Apr. 16th 1913
 Kate S. Wright, Plaintiff
 Vs
 George A. Stevens, Defendant.
 Final judgment in favor of Pltff. rendered Feb. 26, 1914.
 Judg. Bk. 297-11
 Judgment decrees Pltff. to be the owner of lots 4 and 5 per this map and restores possession to Pltff. of lot 5.

PLAT

OF
 LOTS 1 TO 6 INCLUSIVE
 OF THE

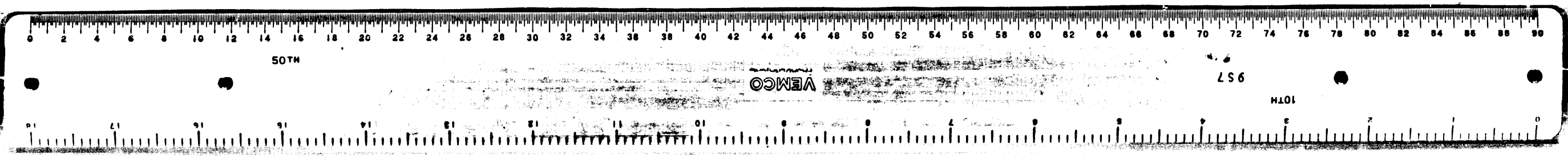
N.W. 1/4 of Sec 7 of Twp. 3N., R7W. S.B.B.M.
 Showing conditions on ground regarding inaccurate original survey
 Scale 1" = 500'
 Knapp & Woodard
 Civil Engineers
 12-26-13



C.F. 779

We hereby certify that we assisted J.M. Tate in the above survey, and that to the best of our knowledge and belief it is a correct and just representation of conditions as found by him upon the ground.
 Noah Linton Axeman.
 Dan Smith Axeman.
 Subscribed and sworn to before me, this 25 day of Apr. 1913
 Bessie Jopp, Notary Public
 in and for San Bernardino Co., California.

We hereby certify that we assisted J.M. Tate in the above survey, and that to the best of our knowledge and belief it is a correct and just representation of conditions as found by him upon the ground.
 D. Wandell, Chairman.
 Leo Whistrich, Chairman.
 Subscribed and sworn to before me, this 26 day of Nov. 1912.
 Notary Public
 in and for Los Angeles County, California.
 Sydney Vail Pardee
 J.M. Tate, hereby certifies that I have examined and surveyed the said Section 7 of Twp. No. 3N., R7W., S.B.B.M. and that the accompanying plat is a correct representation of conditions and measurements as found upon the ground.
 Subscribed and sworn to before me, this 26 day of Nov. 1912.
 Notary Public
 Sydney Vail Pardee, in and for Los Angeles County, California.



50TH

OWEA

LS 6

M101

Map No. 113