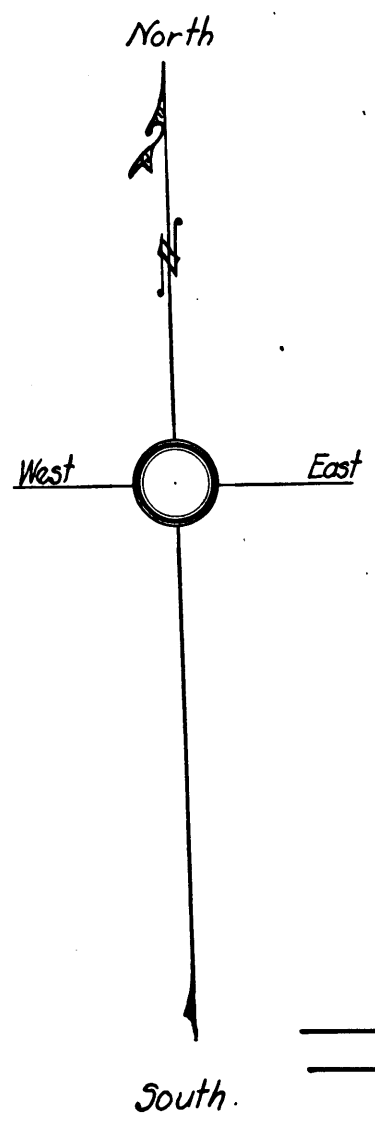


Exhibit C

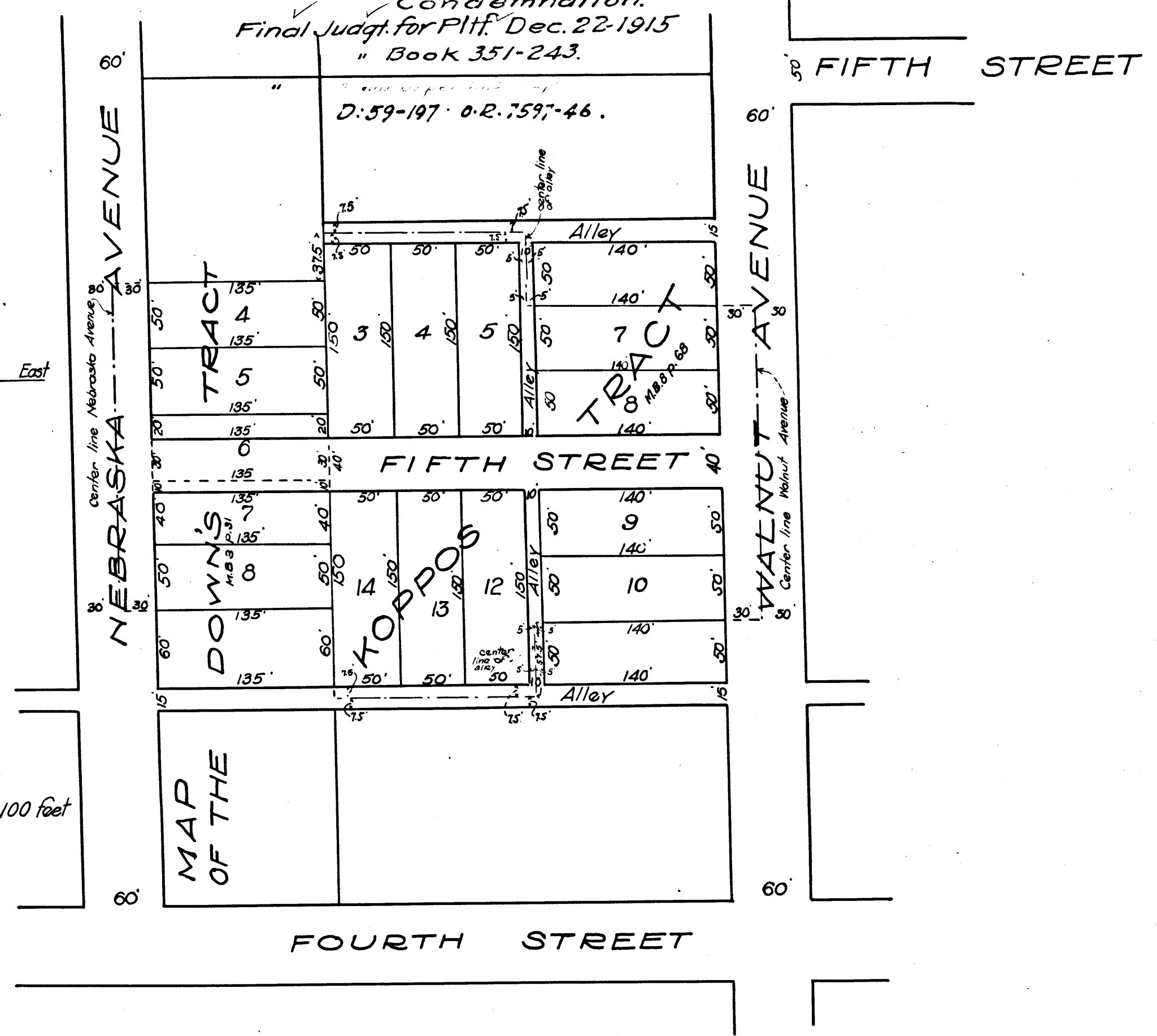
S.C.C. # 312159 City of Long Beach vs. Amanda D. Clawson, et al.

Interlocutory Decree
Condemnation.
Final Judgt. for Pltff. Dec. 22-1915
" Book 351-243.

1915



Scale 1 inch = 100 feet



NEBRASKA AVENUE 80'

WALNUT AVENUE 60'

FOURTH STREET

FIFTH STREET

MAP OF THE

DOWN'S TRACT

TRACT 4

TRACT 7

TOPPOS

FIFTH STREET 40'

D: 59-197 O.R. 7597-46.

Alley

Alley

Comp. H.C.T.

C.F. 783

MEMCO PASADENA, CAL

MEMCO PASADENA, CAL

LS 6

50TH

9 S 7

10TH

