

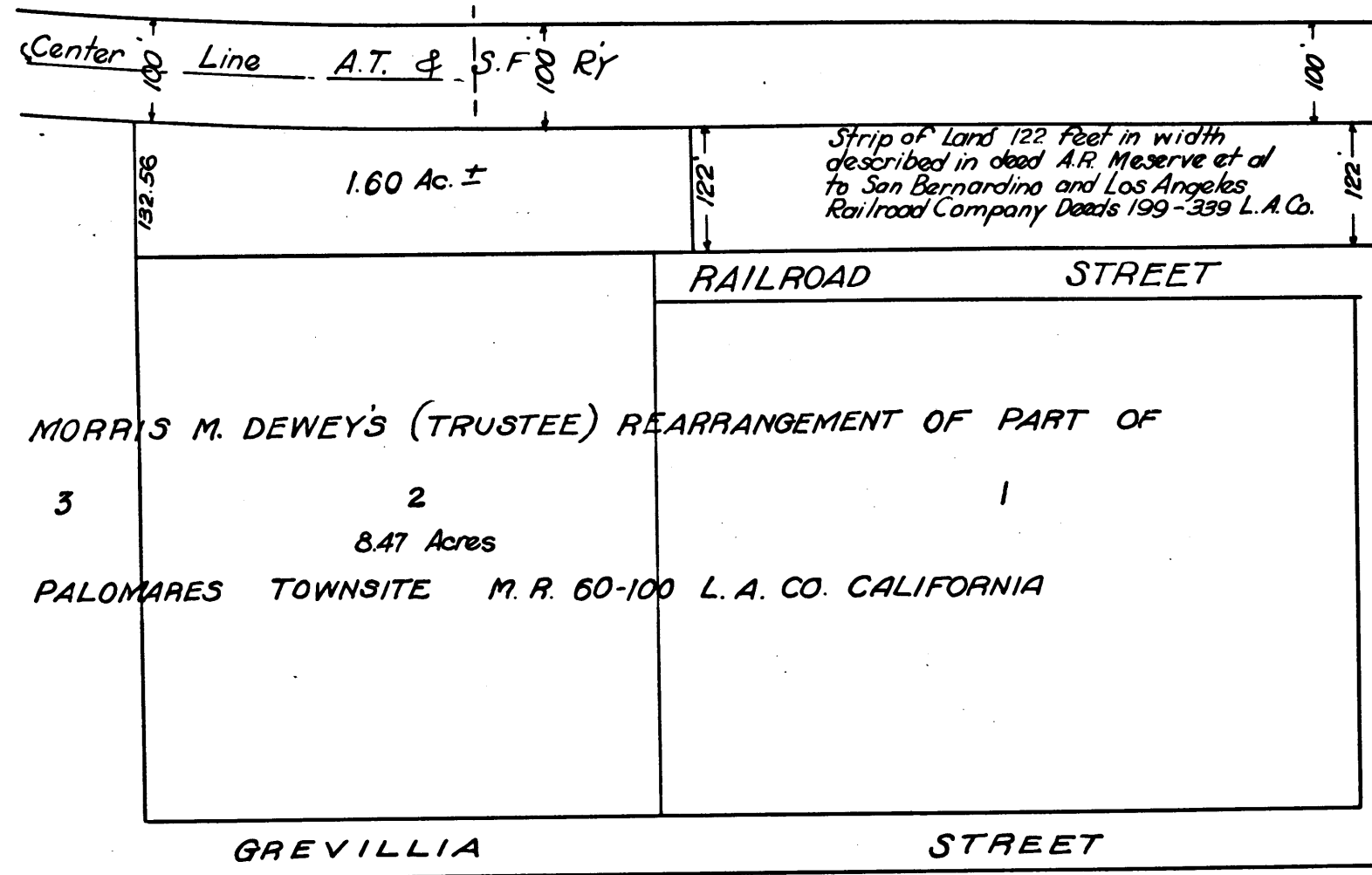
H105

VEMCO  
PASADENA, CAL.

LS 6

10TH

CITY OF POMONA.



MORRIS M. DEWEY'S (TRUSTEE) REARRANGEMENT OF PART OF  
 3 2 1  
 8.47 Acres  
 PALOMARES TOWNSITE M. R. 60-100 L. A. CO. CALIFORNIA

Scale 1"=200'

EXHIBIT "A"

S.C.C # B12453

Pacific Electric Railway Company  
 - Vs. -  
 Amberson, et al.

CONDEMNATION June 23-1914.  
 Interlocutory Decree - ~~July 23-1914~~  
 Final Judgt. for Plff. July 25-1914.  
 Judgt. Book. 300-139.  
 " as per this map.

Land sought to be condemned shown colored red.

Comp. H.C.T.

C.F. 787 -

H105

VEMCO  
PASADENA, CAL.

9 S 7

10TH