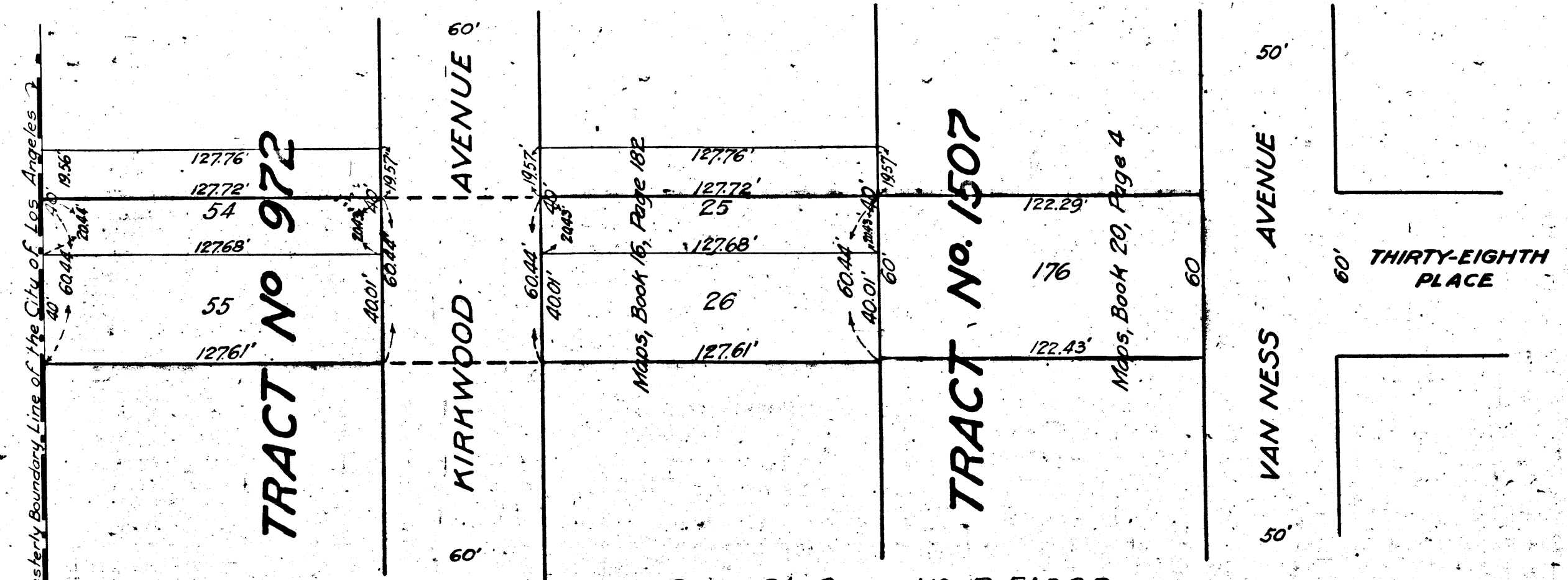
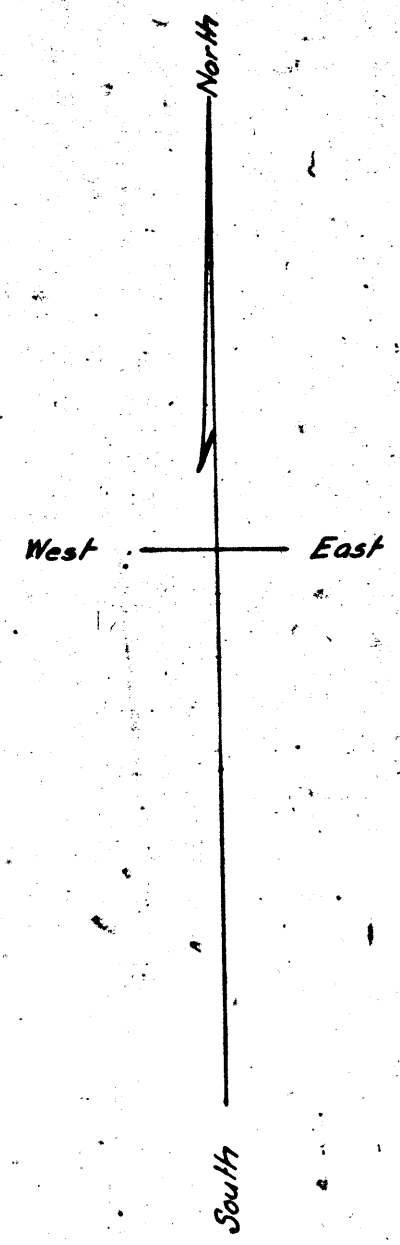


V.E.E.  
V.E.E.  
V.E.E.



Sup. Ct. Case No B 51392  
 Suit for Condemnation  
 Filed June 2, 1917.  
 City of Los Angeles  
 vs.  
 F. J. Hartley et al.  
 Judgment pending June 18, 1918.  
 Final Judgment in favor of Pltff.  
 Rendered June 30, 1919 as per map.  
 D: 22-211 D: 6852-266



**MAP**  
 SHOWING LAND  
 TO BE CONDEMNED  
 FOR THE OPENING OF  
**THIRTY-EIGHTH PLACE**  
 BETWEEN  
**VAN NESS AVENUE**  
 AND  
**THE WESTERLY BOUNDARY LINE**  
**OF THE CITY OF LOS ANGELES**

IN THE CITY OF LOS ANGELES, CALIF.  
 In accordance with Ordinances Nos 35998, 36468 (New Series).  
 Homer Hamlin, City Engineer May 1917.  
 Scale 1 inch = 40 feet

Note: Land to be condemned shown colored red.