

STREET

80

104

TRACT NO. 2026

3 Story Frame Building

1 Story Brick Building

1 Story Brick Building

TRACT NO. 3084

Maps Book 31 page 87

Lot A

Lot B

4 Story Brick Building

1 Story Brick Building

STREET

80

103

BELLEVUE

4 Story Brick Building

19 Story Frame Building

4 Story Brick Building

4 Story Brick Building

3 Story Brick Building

SIXTH

FIGUEROA

80

SUBDIVISION OF LAND

24

25

26

AND BEING A PART OF

LEBANON STREET

KNOWN AS BLOCK 22¹

HANCOCK'S SURVEY

1 Story Frame Building

7 Story Concrete Building

FLOWER

80

TRACT NO. 1546

Maps Book 21 page 62

1 Story Brick Building

162.42

TERRACE

STREET

102

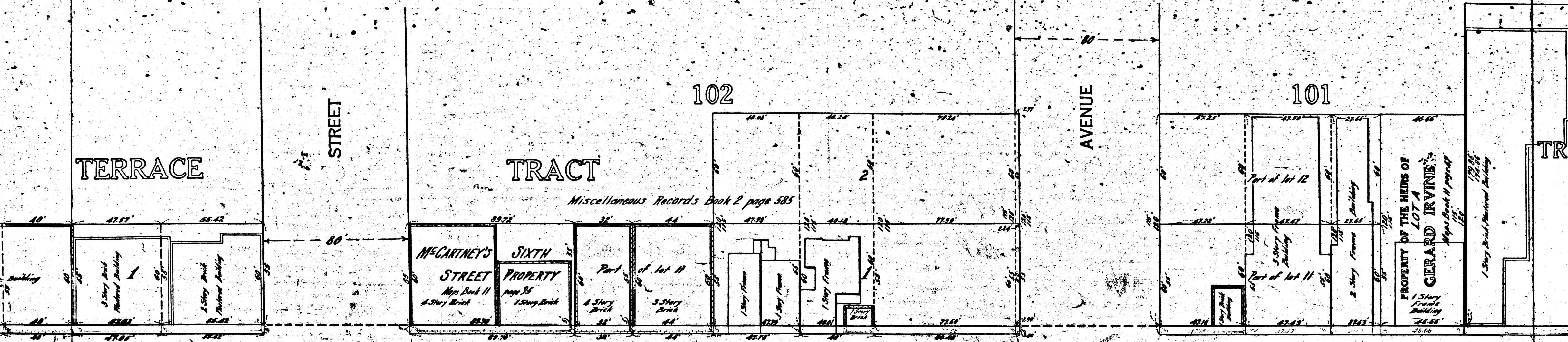
TRACT

AVENUE

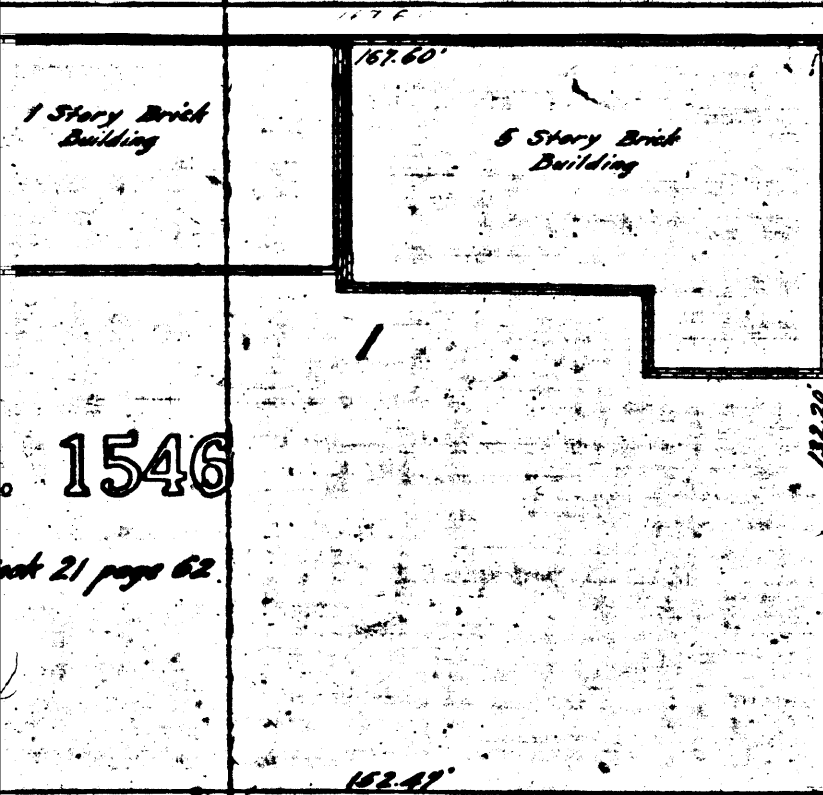
101

TR

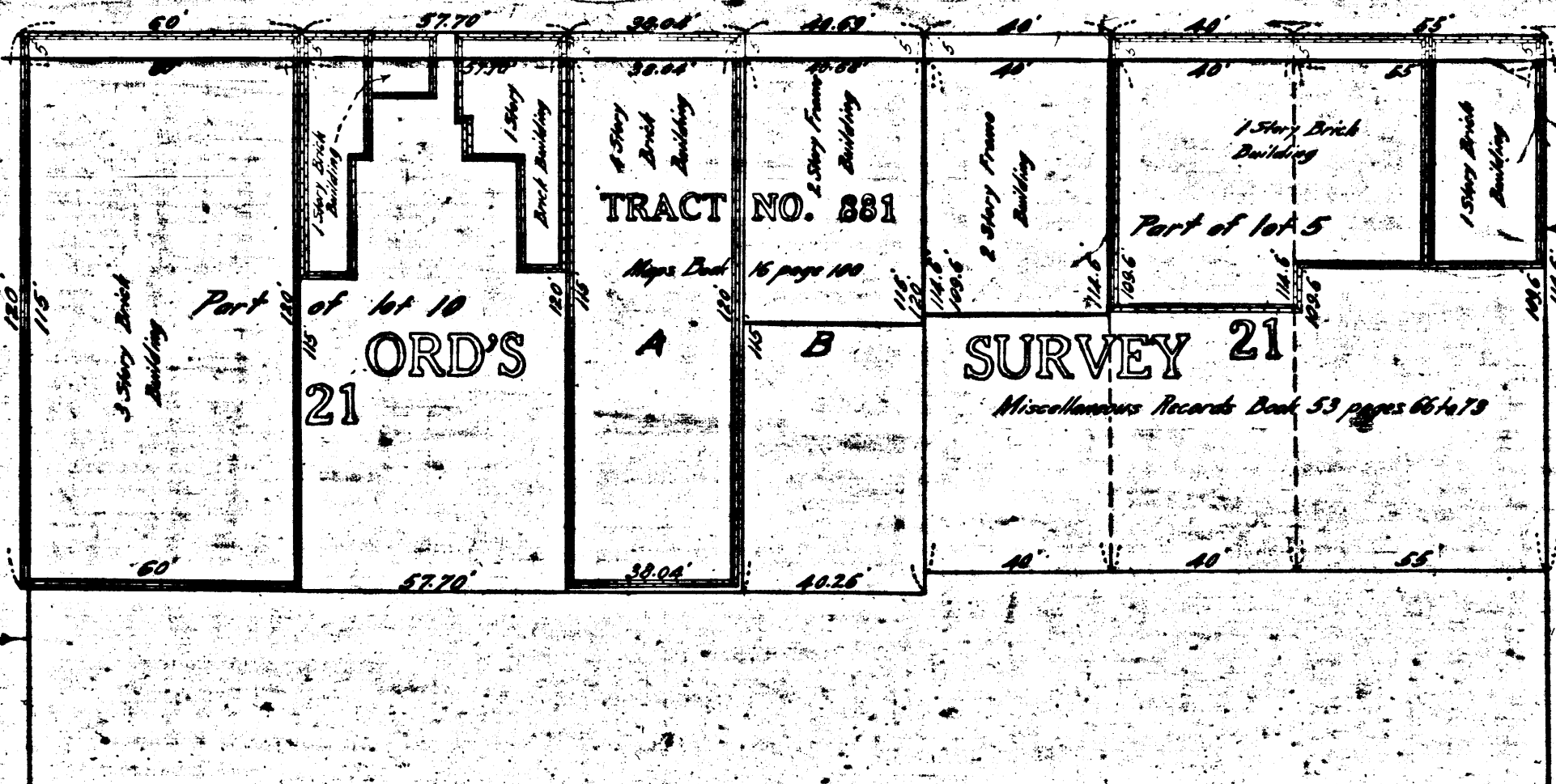
Miscellaneous Records Book 2 page 585



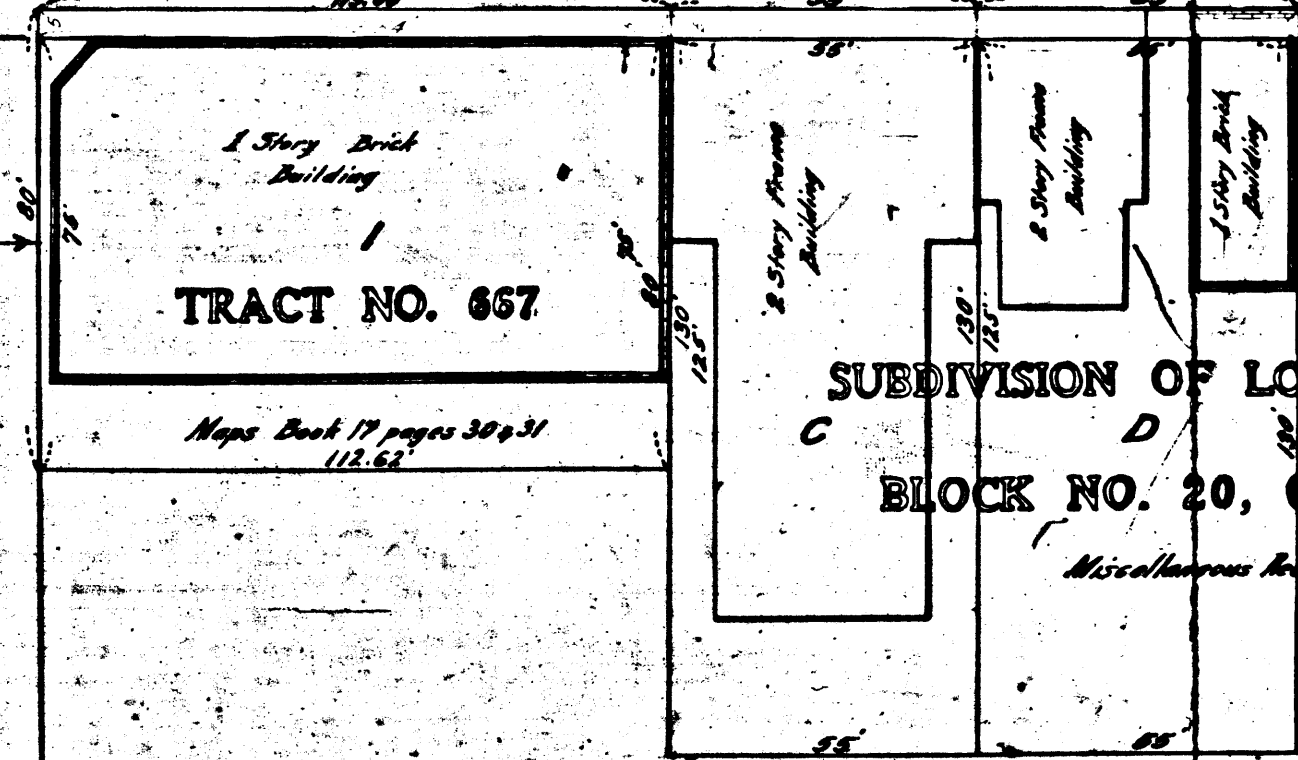
STREET



HOPE



GRAND



1546

ORD'S

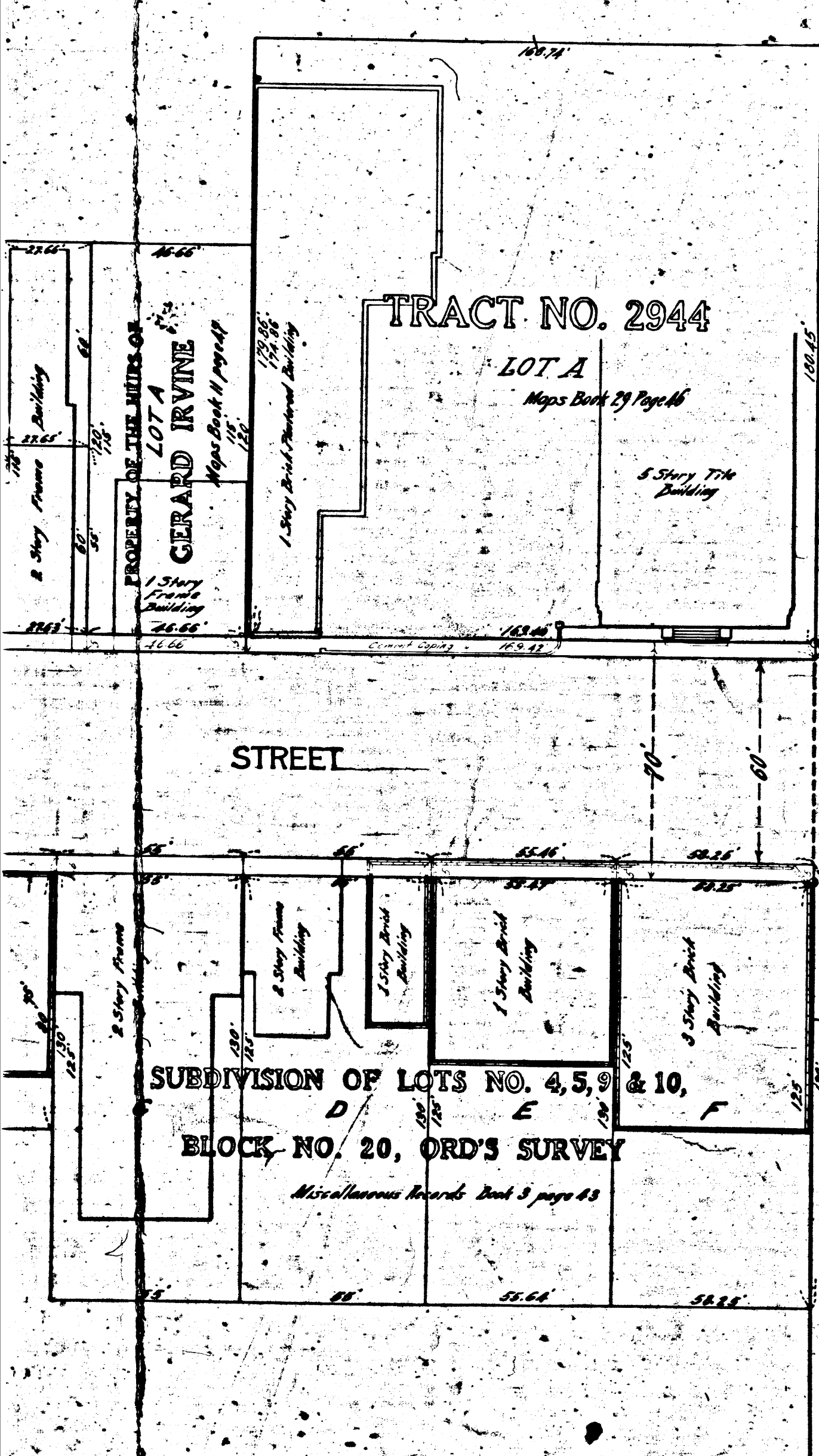
TRACT NO. 881

SURVEY 21

TRACT NO. 667

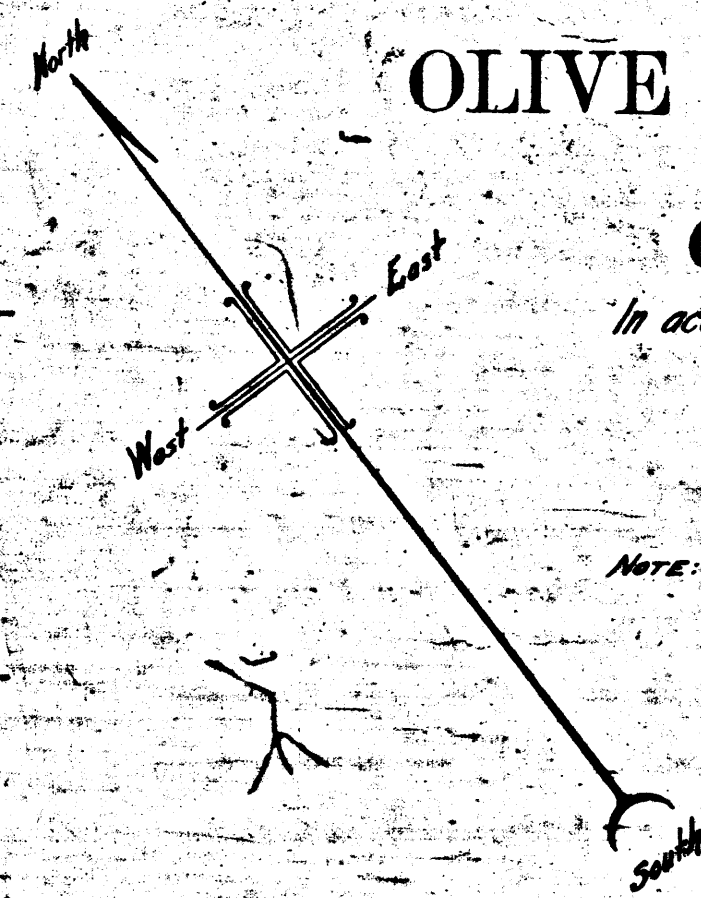
SUBDIVISION OF LOT C

BLOCK NO. 20, 0



MAP
 SHOWING THE LAND TO BE CONDEMNED
 FOR THE WIDENING OF
SIXTH STREET
 FROM
OLIVE STREET TO FIGUEROA STREET
 IN THE
CITY OF LOS ANGELES, CAL.

In accordance with Ordinances Nos 35419 and 35981 (New Series)
HOMER HAMLIN, City Engineer April 1917
 Scale 30 feet to 1 inch



NOTE: Land to be condemned shown colored red.
 Dotted lines and figures show where the holdings differ from the recorded subdivisions.

Sup Ct Case No B. 51426
 Filed June 4, 1917
 Suit for Condemnation
 City of Los Angeles
 vs.
 Lizzie J. Atterbury et al.
 Judgment pending June 18, 1918.
 Interlocutory Judgment in favor of Plaintiff Mar. 3, 1920.
 Final judgment in favor of the Plaintiff as
 per map, rendered September 28, 1920.
 D: 31-27 D: 7186-334